

99

## WEST 127<sup>TH</sup> STREET HARLEM, NYC

Between Malcolm X Blvd & Fifth Avenue



### APPROXIMATE SIZE

470 SF

### ASKING RENT

\$4,000/Month

### POSSESSION

Immediate

### TERM

5-15 Years

### FRONTAGE

15 FT

### COMMENTS

- Ideal for dry use retail or office
- Bathroom in place
- High ceilings
- Close proximity to subway

### NEIGHBORS

Red Rooster Harlem • Pandora • Starbucks • Checkers • Marshalls • TJ Maxx • Staples • T-Mobile • Shake Shack • Insomnia Cookies • Whole Foods

### TRANSPORTATION

2 3

PROPERTY INFORMATION

**JAMES FAMULARO**  
President

**DANE HARLOWE**

Director  
212.468.5966  
dharlowe@meridiancapital.com

**GARRETT KELLY**

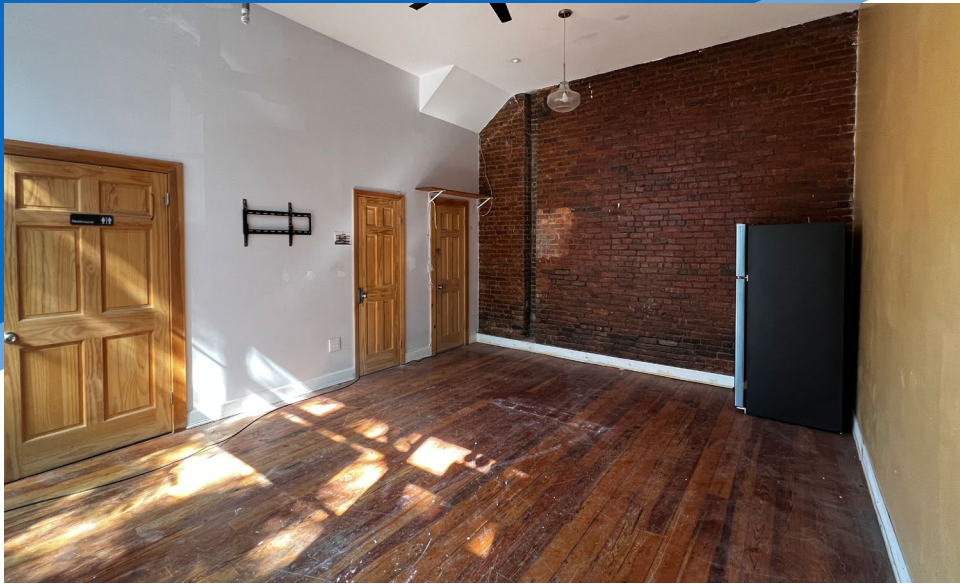
Director  
212.468.5939  
gkelly@meridiancapital.com



# 99 WEST 127<sup>TH</sup> STREET

HARLEM, NYC | Between Malcolm X Blvd and Fifth Avenue

RETAIL FOR LEASE



INTERIOR

**JAMES FAMULARO**  
President

**DANE HARLOWE**  
Director  
212.468.5966  
dharlowe@meridiancapital.com

**GARRETT KELLY**  
Director  
212.468.5939  
gkelly@meridiancapital.com



All information supplied is from sources deemed reliable and is furnished subject to errors, omissions, modifications, removal of the listing from sale or lease, and to any listing conditions, including the rates and manner of payment of commissions for particular offerings imposed by Meridian Capital Group. This information may include estimates and projections prepared by Meridian Capital Group with respect to future events, and these future events may or may not actually occur. Such estimates and projections reflect various assumptions concerning anticipated results. While Meridian Capital Group believes these assumptions are reasonable, there can be no assurance that any of these estimates and projections will be correct. Therefore, actual results may vary materially from these estimates and projections. Any square footage dimensions set forth are approximate.

# 99 WEST 127<sup>TH</sup> STREET

HARLEM, NYC | Between Malcolm X Blvd and Fifth Avenue

RETAIL FOR LEASE

NEIGHBORS

**JAMES FAMULARO**  
President

**DANE HARLOWE**  
Director  
212.468.5966  
dharlowe@meridiancapital.com

**GARRETT KELLY**  
Director  
212.468.5939  
gkelly@meridiancapital.com



All information supplied is from sources deemed reliable and is furnished subject to errors, omissions, modifications, removal of the listing from sale or lease, and to any listing conditions, including the rates and manner of payment of commissions for particular offerings imposed by Meridian Capital Group. This information may include estimates and projections prepared by Meridian Capital Group with respect to future events, and these future events may or may not actually occur. Such estimates and projections reflect various assumptions concerning anticipated results. While Meridian Capital Group believes these assumptions are reasonable, there can be no assurance that any of these estimates and projections will be correct. Therefore, actual results may vary materially from these estimates and projections. Any square footage dimensions set forth are approximate.