

32

GRAND STREET SOHO, NYC

Corner of Grand & Thompson Streets

RESTAURANT/RETAIL FOR LEASE



PROPERTY INFORMATION

APPROXIMATE SIZE

1,000 SF + Basement

ASKING RENT

\$14,000/Month

TERM

5-10 Years

POSSESSION

Immediate

FRONTAGE

60 FT Wraparound

COMMENTS

- Corner retail space in the heart of SoHo
- Large wraparound windows providing natural light
- Located at the base of a 40-unit residential building
- Recently updated with new electrical, plumbing, and HVAC systems
- **Space can be combined with Wundabar Pilates vacant space next door**

NEIGHBORS

Maison Close • Little Ways • Flipper's • Bang Bang Tattoo • Mamo • Trader Joe's • Color Factory • Cut and Cropped • Oliver Peoples

TRANSPORTATION



JAMES FAMULARO

President

JOHN ROESCH

Director

212.468.5971

jroesch@meridiancapital.com

BENNY STERNBERG

Associate

212.468.5918

bsternberg@meridiancapital.com

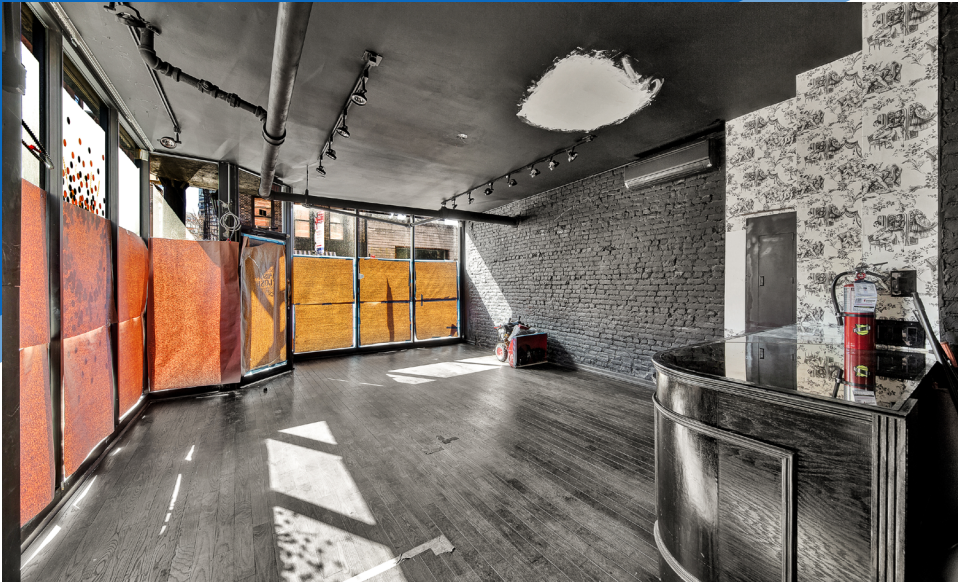


All information supplied is from sources deemed reliable and is furnished subject to errors, omissions, modifications, removal of the listing from sale or lease, and to any listing conditions, including the rates and manner of payment of commissions for particular offerings imposed by Meridian Capital Group. This information may include estimates and projections prepared by Meridian Capital Group with respect to future events, and these future events may or may not actually occur. Such estimates and projections reflect various assumptions concerning anticipated results. While Meridian Capital Group believes these assumptions are reasonable, there can be no assurance that any of these estimates and projections will be correct. Therefore, actual results may vary materially from these estimates and projections. Any square footage dimensions set forth are approximate.

32 GRAND STREET

SOHO, NYC | Corner of Grand and Thompson Streets

RESTAURANT/RETAIL FOR LEASE



INTERIOR

JAMES FAMULARO
President

JOHN ROESCH
Director
212.468.5971
jroesch@meridiancapital.com

BENNY STERNBERG
Associate
212.468.5918
bsternberg@meridiancapital.com



All information supplied is from sources deemed reliable and is furnished subject to errors, omissions, modifications, removal of the listing from sale or lease, and to any listing conditions, including the rates and manner of payment of commissions for particular offerings imposed by Meridian Capital Group. This information may include estimates and projections prepared by Meridian Capital Group with respect to future events, and these future events may or may not actually occur. Such estimates and projections reflect various assumptions concerning anticipated results. While Meridian Capital Group believes these assumptions are reasonable, there can be no assurance that any of these estimates and projections will be correct. Therefore, actual results may vary materially from these estimates and projections. Any square footage dimensions set forth are approximate.

32 GRAND STREET

SOHO, NYC | Corner of Grand and Thompson Streets

RESTAURANT/RETAIL FOR LEASE



NEIGHBORS

JAMES FAMULARO
President

JOHN ROESCH
Director
212.468.5971
jroesch@meridiancapital.com

BENNY STERNBERG
Associate
212.468.5918
bsternberg@meridiancapital.com



All information supplied is from sources deemed reliable and is furnished subject to errors, omissions, modifications, removal of the listing from sale or lease, and to any listing conditions, including the rates and manner of payment of commissions for particular offerings imposed by Meridian Capital Group. This information may include estimates and projections prepared by Meridian Capital Group with respect to future events, and these future events may or may not actually occur. Such estimates and projections reflect various assumptions concerning anticipated results. While Meridian Capital Group believes these assumptions are reasonable, there can be no assurance that any of these estimates and projections will be correct. Therefore, actual results may vary materially from these estimates and projections. Any square footage dimensions set forth are approximate.