

2003

CRUGER AVENUE BRONX PARK EAST, BRONX

Cross Street Bronxdale Avenue

MEDICAL/COMMUNITY FACILITY FOR LEASE

APPROXIMATE SIZE

30,000-40,000 SF

ASKING RENT

Upon Request

POSSESSION

Q4 2024

TERM

Negotiable

COMMENTS

- On-site parking
- State-of-the-art utilities and services
- Build-to-suit options
- Expansive views

NEIGHBORS

Pine Restaurant • Bronx High School of Visual Arts • Bronx Park Urgent Medical Care • USPS • Key Food • Subway • Starbucks • GNC • Subway

TRANSPORTATION

2 5



PROPERTY INFORMATION

JAMES FAMULARO

President

BEN BIBERAJ

Senior Director

703.434.1461

bbiberaj@meridiancapital.com

STEPHEN LIGAMBI

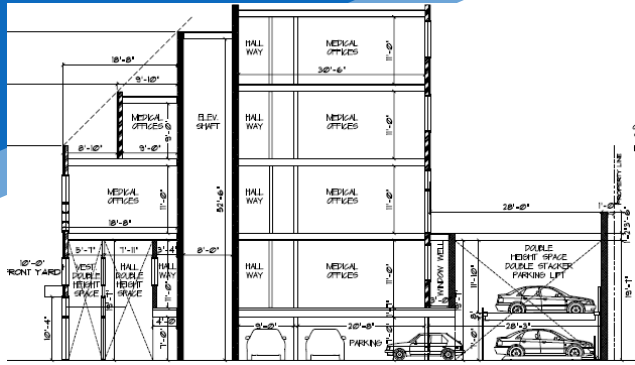
Associate

212.468.5985

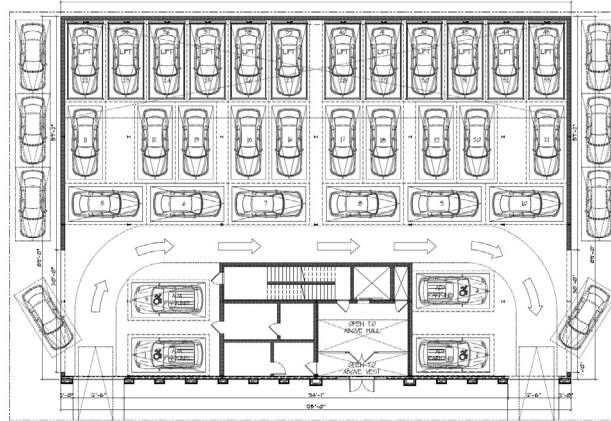
sligambi@meridiancapital.com



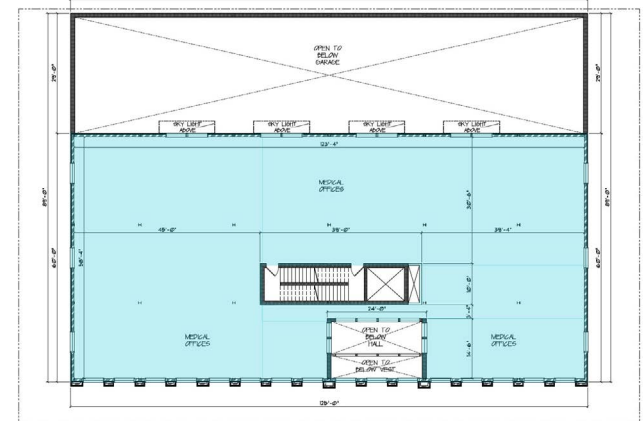
All information supplied is from sources deemed reliable and is furnished subject to errors, omissions, modifications, removal of the listing from sale or lease, and to any listing conditions, including the rates and manner of payment of commissions for particular offerings imposed by Meridian Capital Group. This information may include estimates and projections prepared by Meridian Capital Group with respect to future events, and these future events may or may not actually occur. Such estimates and projections reflect various assumptions concerning anticipated results. While Meridian Capital Group believes these assumptions are reasonable, there can be no assurance that any of these estimates and projections will be correct. Therefore, actual results may vary materially from these estimates and projections. Any square footage dimensions set forth are approximate.



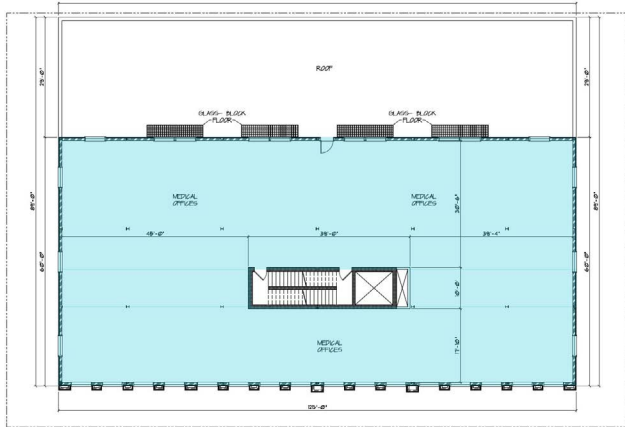
BUILDING SECTION



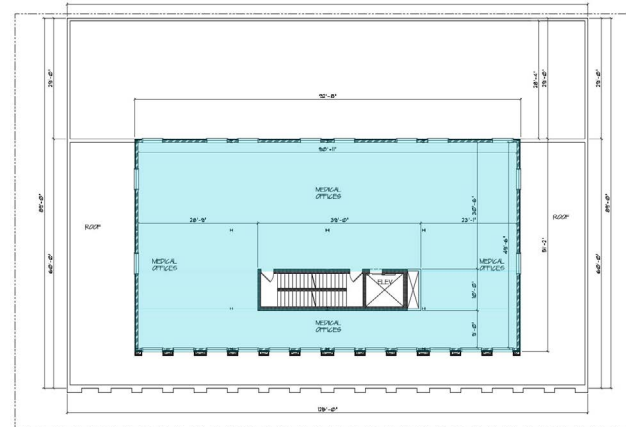
FIRST FLOOR



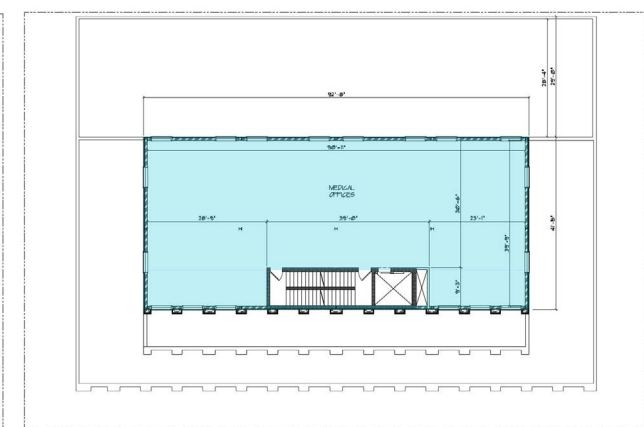
SECOND FLOOR



THIRD FLOOR



FOURTH FLOOR



FIFTH FLOOR

FLOOR PLANS

JAMES FAMULARO
 President

BEN BIBERAJ
 Senior Director
 703.434.1461
 bbiberaj@meridiancapital.com

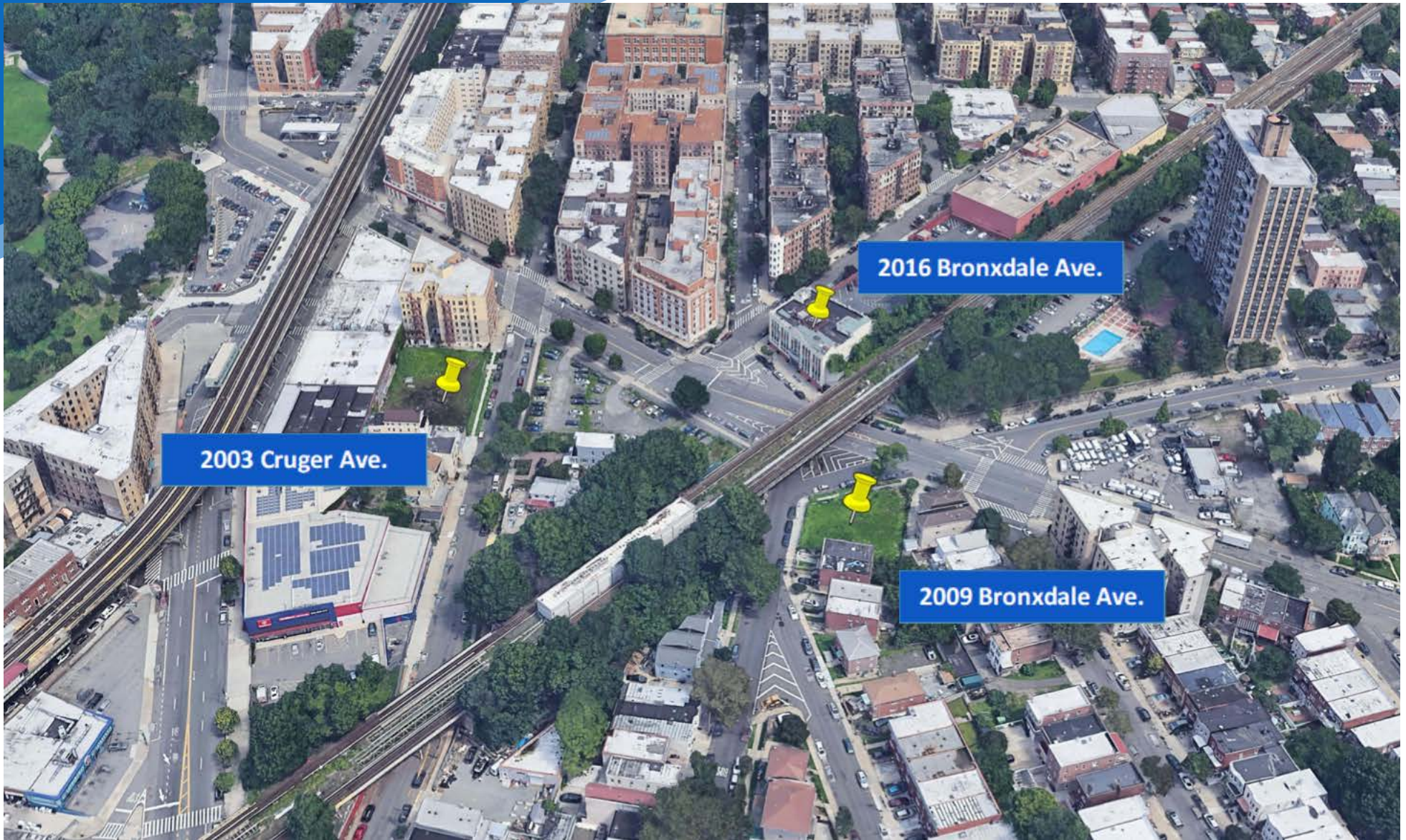
STEPHEN LIGAMBI
 Associate
 212.468.5985
 sligambi@meridiancapital.com



2003 CRUGER AVENUE

BRONX PARK EAST, BRONX | Cross Street Bronxdale Avenue

MEDICAL/COMMUNITY FACILITY FOR LEASE



NEIGHBORS

JAMES FAMULARO
President

BEN BIBERAJ
Senior Director
703.434.1461
bbiberaj@meridiancapital.com

STEPHEN LIGAMBI
Associate
212.468.5985
sligambi@meridiancapital.com



All information supplied is from sources deemed reliable and is furnished subject to errors, omissions, modifications, removal of the listing from sale or lease, and to any listing conditions, including the rates and manner of payment of commissions for particular offerings imposed by Meridian Capital Group. This information may include estimates and projections prepared by Meridian Capital Group with respect to future events, and these future events may or may not actually occur. Such estimates and projections reflect various assumptions concerning anticipated results. While Meridian Capital Group believes these assumptions are reasonable, there can be no assurance that any of these estimates and projections will be correct. Therefore, actual results may vary materially from these estimates and projections. Any square footage dimensions set forth are approximate.