

17

KENT AVENUE WILLIAMSBURG, BROOKLYN

Corner of North 13th Street & Kent Avenue

RETAIL FOR LEASE

APPROXIMATE SIZE

1,875 SF

ASKING RENT

\$15,000/Month

POSSESSION

Immediate

TERM

10-15 Years

FRONTAGE

100 FT Wraparound

COMMENTS

- Wraparound glass storefront
- Fully white-boxed
- Can be vented
- Steps from 25 Kent, a brand-new office development home to Amazon Music and Kith Global Headquarters
- All uses considered

NEIGHBORS

Kith • The William Vale Hotel • Westlight • The Gutter • Brooklyn Bowl • The Whiskey Brooklyn • Café Balearica • Bohemia • The Backyard Bar • Mable's Smokehouse

TRANSPORTATION



JAMES FAMULARO

President
646.658.7373
jfamularo@meridiancapital.com

JORDAN LANGER

Associate
212.468.5977
jlanger@meridiancapital.com

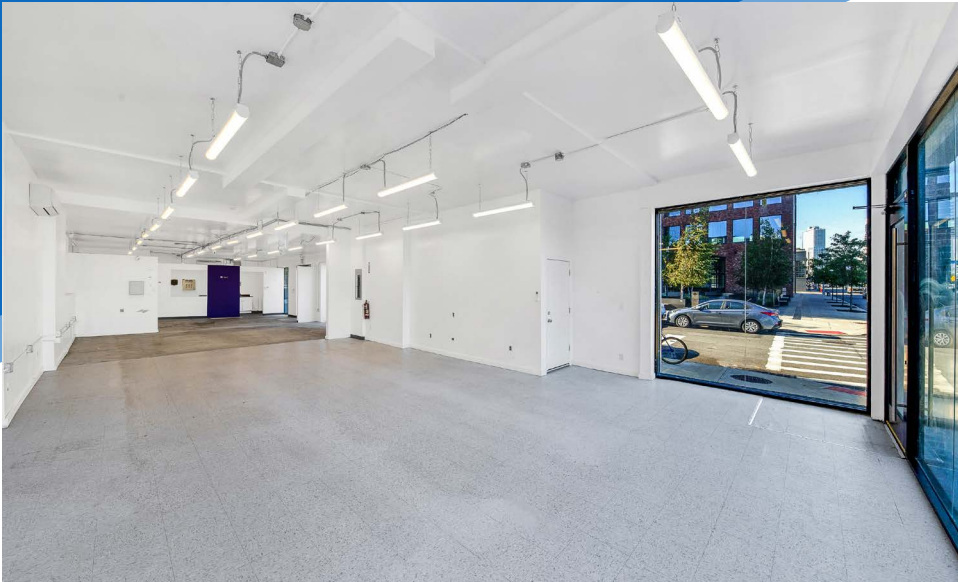


All information supplied is from sources deemed reliable and is furnished subject to errors, omissions, modifications, removal of the listing from sale or lease, and to any listing conditions, including the rates and manner of payment of commissions for particular offerings imposed by Meridian Capital Group. This information may include estimates and projections prepared by Meridian Capital Group with respect to future events, and these future events may or may not actually occur. Such estimates and projections reflect various assumptions concerning anticipated results. While Meridian Capital Group believes these assumptions are reasonable, there can be no assurance that any of these estimates and projections will be correct. Therefore, actual results may vary materially from these estimates and projections. Any square footage dimensions set forth are approximate.

17 KENT AVENUE

WILLIAMSBURG, BROOKLYN | Corner of North 13th Street and Kent Avenue

RETAIL FOR LEASE



INTERIOR

JAMES FAMULARO

President
646.658.7373
jfamularo@meridiancapital.com

JORDAN LANGER

Associate
212.468.5977
jlanger@meridiancapital.com



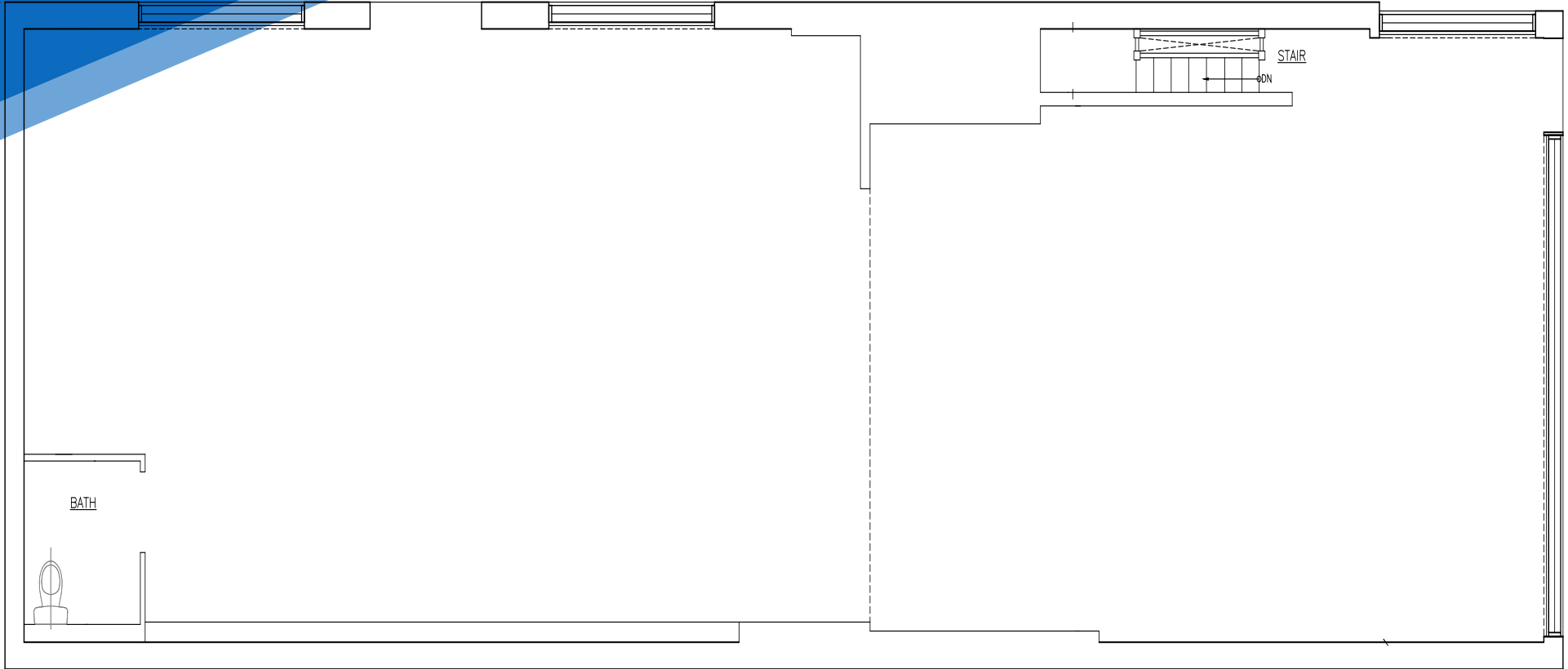
All information supplied is from sources deemed reliable and is furnished subject to errors, omissions, modifications, removal of the listing from sale or lease, and to any listing conditions, including the rates and manner of payment of commissions for particular offerings imposed by Meridian Capital Group. This information may include estimates and projections prepared by Meridian Capital Group with respect to future events, and these future events may or may not actually occur. Such estimates and projections reflect various assumptions concerning anticipated results. While Meridian Capital Group believes these assumptions are reasonable, there can be no assurance that any of these estimates and projections will be correct. Therefore, actual results may vary materially from these estimates and projections. Any square footage dimensions set forth are approximate.

17 KENT AVENUE

WILLIAMSBURG, BROOKLYN | Corner of North 13th Street and Kent Avenue

RETAIL FOR LEASE

FLOOR PLAN



JAMES FAMULARO

President
646.658.7373
jfamularo@meridiancapital.com

JORDAN LANGER

Associate
212.468.5977
jlanger@meridiancapital.com



All information supplied is from sources deemed reliable and is furnished subject to errors, omissions, modifications, removal of the listing from sale or lease, and to any listing conditions, including the rates and manner of payment of commissions for particular offerings imposed by Meridian Capital Group. This information may include estimates and projections prepared by Meridian Capital Group with respect to future events, and these future events may or may not actually occur. Such estimates and projections reflect various assumptions concerning anticipated results. While Meridian Capital Group believes these assumptions are reasonable, there can be no assurance that any of these estimates and projections will be correct. Therefore, actual results may vary materially from these estimates and projections. Any square footage dimensions set forth are approximate.

17 KENT AVENUE

WILLIAMSBURG, BROOKLYN | Corner of North 13th Street and Kent Avenue

RETAIL FOR LEASE



NEIGHBORS

JAMES FAMULARO

President
646.658.7373
jfamularo@meridiancapital.com

JORDAN LANGER

Associate
212.468.5977
jlanger@meridiancapital.com



All information supplied is from sources deemed reliable and is furnished subject to errors, omissions, modifications, removal of the listing from sale or lease, and to any listing conditions, including the rates and manner of payment of commissions for particular offerings imposed by Meridian Capital Group. This information may include estimates and projections prepared by Meridian Capital Group with respect to future events, and these future events may or may not actually occur. Such estimates and projections reflect various assumptions concerning anticipated results. While Meridian Capital Group believes these assumptions are reasonable, there can be no assurance that any of these estimates and projections will be correct. Therefore, actual results may vary materially from these estimates and projections. Any square footage dimensions set forth are approximate.