

1663B

PARK AVENUE
EAST HARLEM, NYC

Between East 117th & 118th Streets



APPROXIMATE SIZE

300 SF

ASKING RENT

\$3,500/Month

POSSESSION

Immediate

TERM

5-10 Years

FRONTAGE

10 FT

COMMENTS

- Fully white-boxed
- Space in excellent condition
- Bathroom in place
- Steps from busiest block in Harlem on 116th Street

NEIGHBORS

Sylla • Armonie Bistro • UPS • House of Candles
• Spafiesta • Café on Park • Lachula • Kumon

TRANSPORTATION

4 5 6

PROPERTY INFORMATION

JAMES FAMULARO
President

DANE HARLOWE
Director
212.468.5966
dharlowe@meridiancapital.com

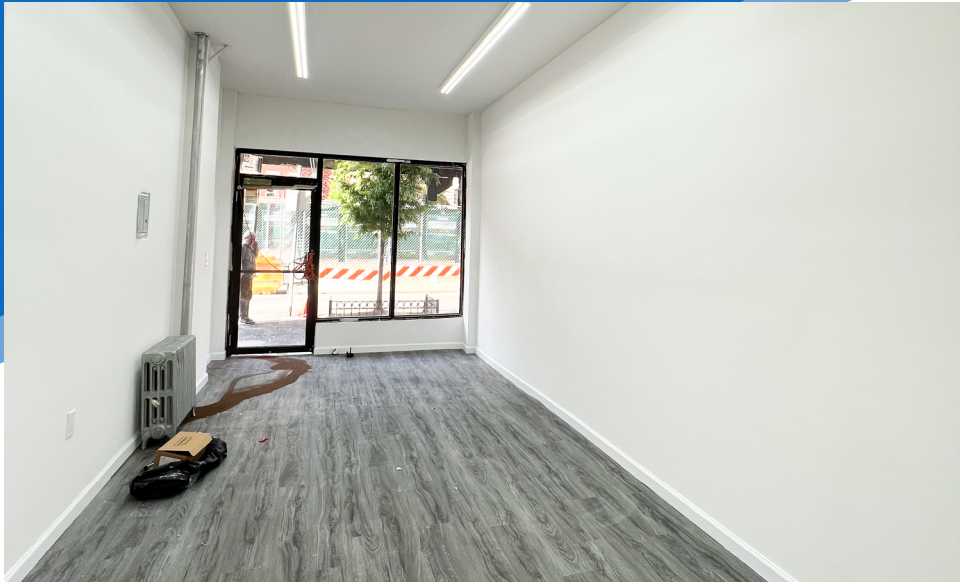
ALEC NAMDAR
Associate
212.468.5915
anamdar@meridiancapital.com



1663B PARK AVENUE

EAST HARLEM, NYC | Between East 117th & 118th Streets

RETAIL FOR LEASE



INTERIOR

JAMES FAMULARO
President

DANE HARLOWE
Director
212.468.5966
dharlowe@meridiancapital.com

ALEC NAMDAR
Associate
212.468.5915
anamdar@meridiancapital.com



All information supplied is from sources deemed reliable and is furnished subject to errors, omissions, modifications, removal of the listing from sale or lease, and to any listing conditions, including the rates and manner of payment of commissions for particular offerings imposed by Meridian Capital Group. This information may include estimates and projections prepared by Meridian Capital Group with respect to future events, and these future events may or may not actually occur. Such estimates and projections reflect various assumptions concerning anticipated results. While Meridian Capital Group believes these assumptions are reasonable, there can be no assurance that any of these estimates and projections will be correct. Therefore, actual results may vary materially from these estimates and projections. Any square footage dimensions set forth are approximate.

1663B PARK AVENUE

EAST HARLEM, NYC | Between East 117th & 118th Streets

RETAIL FOR LEASE

NEIGHBORS

1663B PARK AVENUE

Block between E 118th and E 117th Street:
 madison wine and liquor, KUMON, SWING IT INC., Sylla, CB11M EAST HARLEM, citi bike provided by IGA

Block between E 117th and E 116th Street:
 Levels Barbershop, HEALTHY CHOICE, Vidalli's Pizzeria, Church of The Lord Jesus Christ of the Apostolic Faith, Roly's Barbershop, MADISON AVENUE LAUNDRY, GOSO (GETTING OUT STAYING OUT), SG (SHEEP HILL), URBAN, Midtown Fish Meat Market, 95 Park Deli, ARMONIE BISTRO, boost mobile, ups, Redeemer CHURCHES & MINISTRIES, LACHULA (TAQUERIA)

Block between E 116th and E 115th Street:
 Empire Corner II, NEW YORK NAILS & SPA, 1411 Savory Deli, Magaly's Hair Innovation, Furniture 5th, Yoga Bliss, Avenue Deli Fifth, Troy's Barber Shop, Cencerro Deli Corp, The New King Deli Grocery Corp, BB Fashion, Cross Culture Kitchen, Christmas Wine & Liquor, NY Wholesale Dry Cleaners, Grace Cleaners, House of CANDLES, Cafe on Park, SPAFIESTA, Angeles Deli Grocery Corp, A'dar Cafe & Lounge, Memo's tattoos, Nuevo Dia Fruits, Randy Barber Shop, Il Gnocchi Restaurant, Lucky Tobacco Shop, B&V Jewelry, German Barber Shop, La Paloma Candy Grocery Inc, Granada International Sales, El Barrio Superette

JAMES FAMULARO
 President

DANE HARLOWE
 Director
 212.468.5966
 dharlowe@meridiancapital.com

ALEC NAMDAR
 Associate
 212.468.5915
 anamdard@meridiancapital.com



All information supplied is from sources deemed reliable and is furnished subject to errors, omissions, modifications, removal of the listing from sale or lease, and to any listing conditions, including the rates and manner of payment of commissions for particular offerings imposed by Meridian Capital Group. This information may include estimates and projections prepared by Meridian Capital Group with respect to future events, and these future events may or may not actually occur. Such estimates and projections reflect various assumptions concerning anticipated results. While Meridian Capital Group believes these assumptions are reasonable, there can be no assurance that any of these estimates and projections will be correct. Therefore, actual results may vary materially from these estimates and projections. Any square footage dimensions set forth are approximate.