

# 128

## EAST 28<sup>TH</sup> STREET NOMAD, NYC

Between Lexington & Park Avenue  
South

RETAIL FOR LEASE

### APPROXIMATE SIZE

Ground Floor: 3,207 SF  
Lower Level: 1,604 SF

### ASKING RENT

Upon Request

### POSSESSION

Immediate

### TERM

10+ Years

### FRONTAGE

35 FT

### COMMENTS

- Venting in place
- 2 skylights in place
- Located at the base of a brand-new 8 story, 11-unit ground-up development in NoMad
- Elevator in place
- Steps from Madison Square Park

### NEIGHBORS

Bagels & Schmear • Sarabeth's • Hillstone Park Avenue • Dos Caminos • Mark's Off Madison • Scarpetta • SLT • Barry's • The James New York NoMad • Avocaderia • Dominique Ansel Bakery

### TRANSPORTATION



### JAMES FAMULARO

President  
646.658.7373  
jfamularo@meridiancapital.com

### JORDAN LANGER

Associate  
212.468.5977  
jlanger@meridiancapital.com

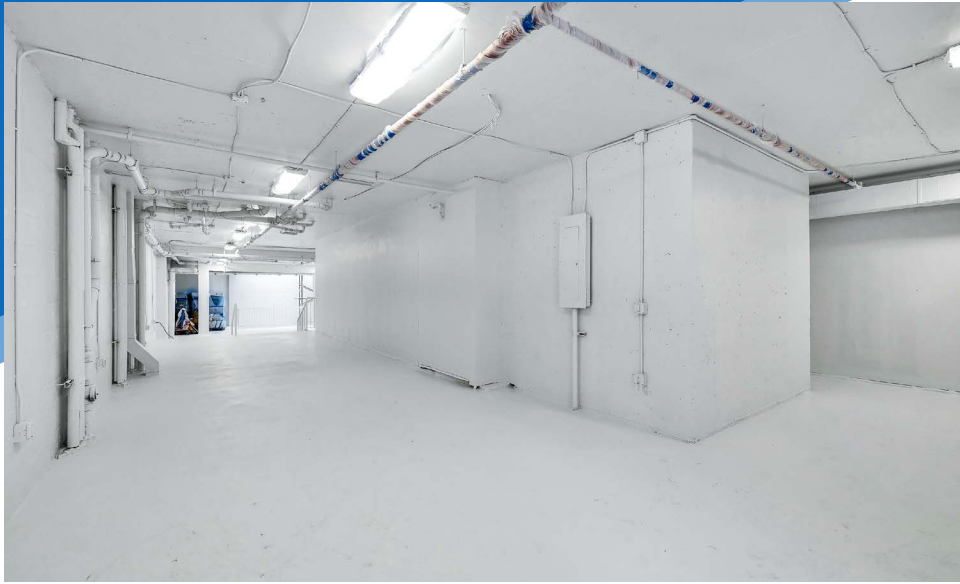


All information supplied is from sources deemed reliable and is furnished subject to errors, omissions, modifications, removal of the listing from sale or lease, and to any listing conditions, including the rates and manner of payment of commissions for particular offerings imposed by Meridian Capital Group. This information may include estimates and projections prepared by Meridian Capital Group with respect to future events, and these future events may or may not actually occur. Such estimates and projections reflect various assumptions concerning anticipated results. While Meridian Capital Group believes these assumptions are reasonable, there can be no assurance that any of these estimates and projections will be correct. Therefore, actual results may vary materially from these estimates and projections. Any square footage dimensions set forth are approximate.

# 128 EAST 28<sup>TH</sup> STREET

NOMAD, NYC | Between Lexington and Park Avenue South

RETAIL FOR LEASE



INTERIOR | GROUND FLOOR

## JAMES FAMULARO

President  
646.658.7373  
jfamularo@meridiancapital.com

## JORDAN LANGER

Associate  
212.468.5977  
jlanger@meridiancapital.com



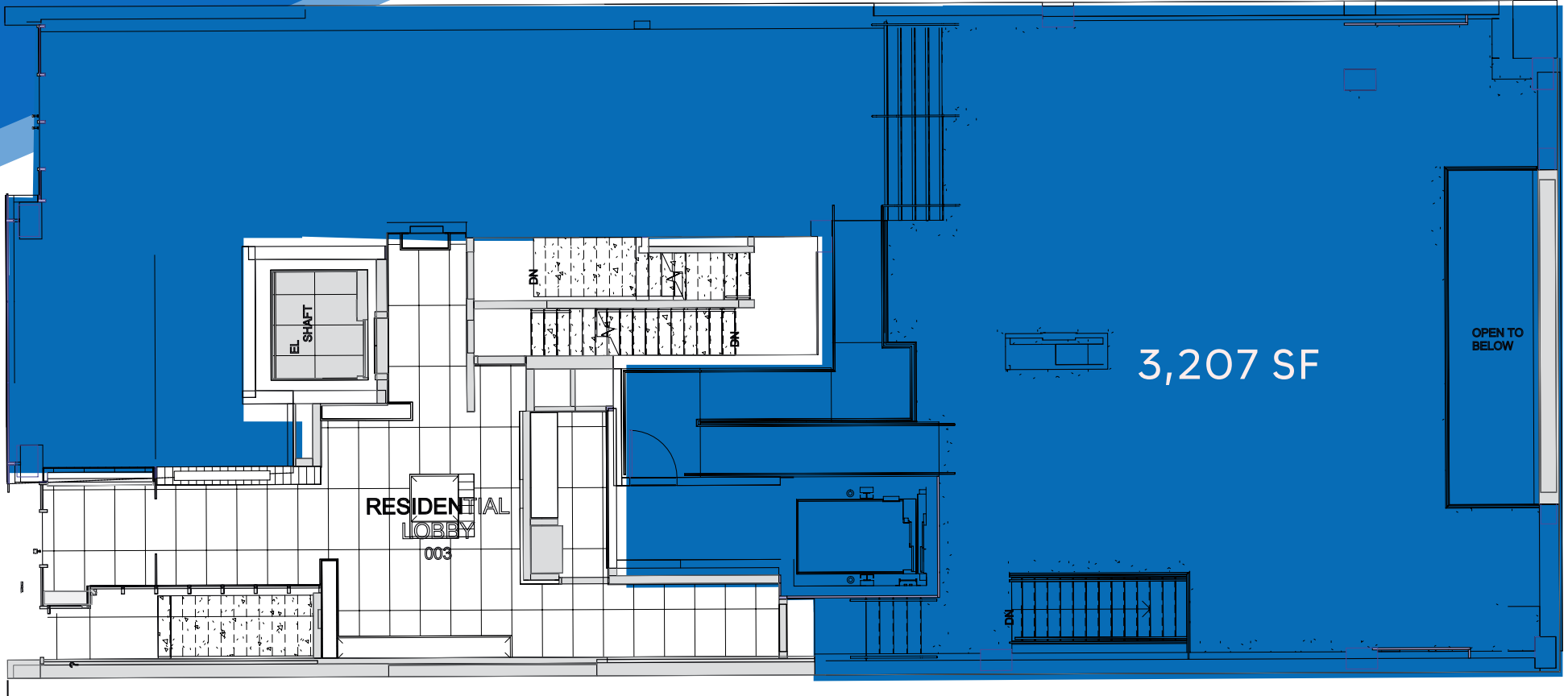
All information supplied is from sources deemed reliable and is furnished subject to errors, omissions, modifications, removal of the listing from sale or lease, and to any listing conditions, including the rates and manner of payment of commissions for particular offerings imposed by Meridian Capital Group. This information may include estimates and projections prepared by Meridian Capital Group with respect to future events, and these future events may or may not actually occur. Such estimates and projections reflect various assumptions concerning anticipated results. While Meridian Capital Group believes these assumptions are reasonable, there can be no assurance that any of these estimates and projections will be correct. Therefore, actual results may vary materially from these estimates and projections. Any square footage dimensions set forth are approximate.

128 EAST 28<sup>TH</sup> STREET

NOMAD, NYC | Between Lexington and Park Avenue South

RETAIL FOR LEASE

FLOOR PLAN | GROUND FLOOR



JAMES FAMULARO

President  
646.658.7373  
jfamularo@meridiancapital.com

JORDAN LANGER

Associate  
212.468.5977  
jlanger@meridiancapital.com



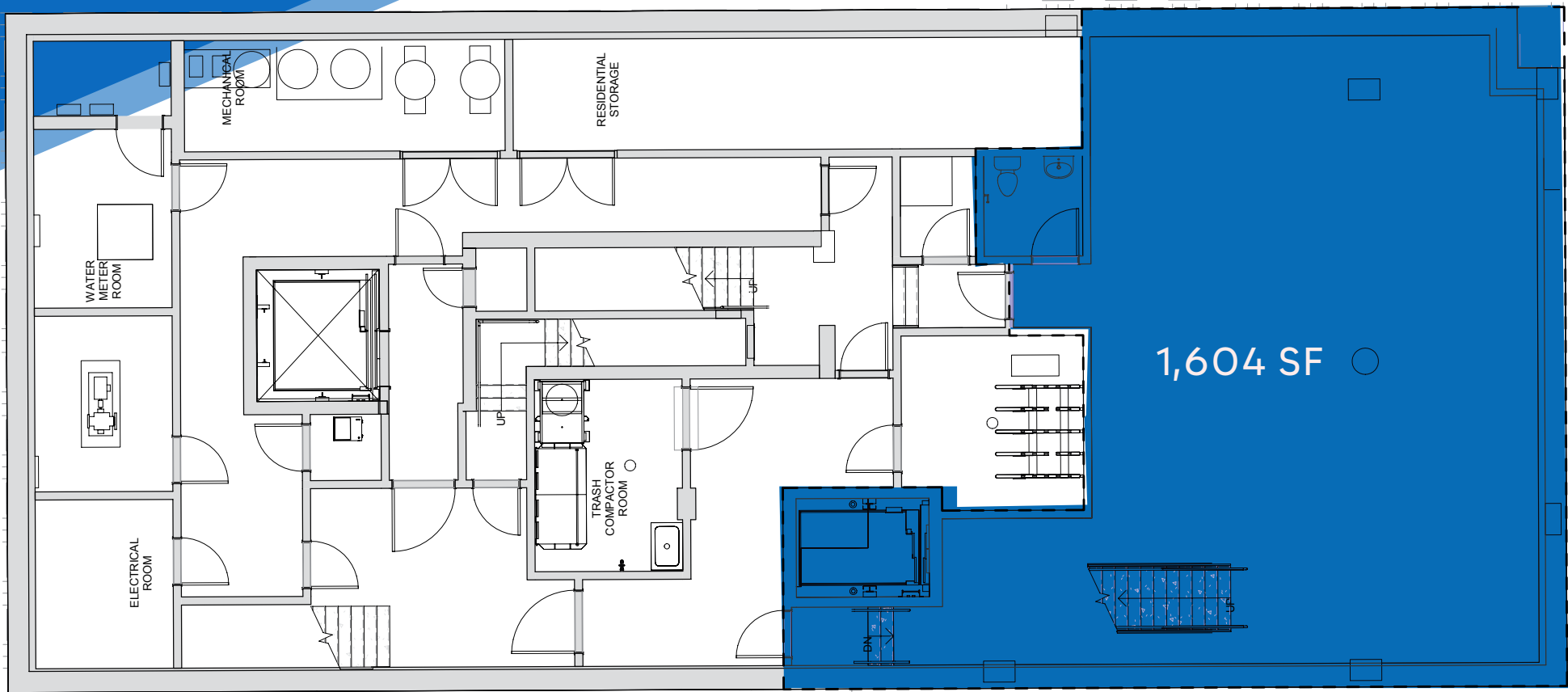
All information supplied is from sources deemed reliable and is furnished subject to errors, omissions, modifications, removal of the listing from sale or lease, and to any listing conditions, including the rates and manner of payment of commissions for particular offerings imposed by Meridian Capital Group. This information may include estimates and projections prepared by Meridian Capital Group with respect to future events, and these future events may or may not actually occur. Such estimates and projections reflect various assumptions concerning anticipated results. While Meridian Capital Group believes these assumptions are reasonable, there can be no assurance that any of these estimates and projections will be correct. Therefore, actual results may vary materially from these estimates and projections. Any square footage dimensions set forth are approximate.

# 128 EAST 28<sup>TH</sup> STREET

NOMAD, NYC | Between Lexington and Park Avenue South

RETAIL FOR LEASE

FLOOR PLAN | LOWER LEVEL



**JAMES FAMULARO**

President  
646.658.7373  
jfamularo@meridiancapital.com

**JORDAN LANGER**

Associate  
212.468.5977  
jlanger@meridiancapital.com



All information supplied is from sources deemed reliable and is furnished subject to errors, omissions, modifications, removal of the listing from sale or lease, and to any listing conditions, including the rates and manner of payment of commissions for particular offerings imposed by Meridian Capital Group. This information may include estimates and projections prepared by Meridian Capital Group with respect to future events, and these future events may or may not actually occur. Such estimates and projections reflect various assumptions concerning anticipated results. While Meridian Capital Group believes these assumptions are reasonable, there can be no assurance that any of these estimates and projections will be correct. Therefore, actual results may vary materially from these estimates and projections. Any square footage dimensions set forth are approximate.



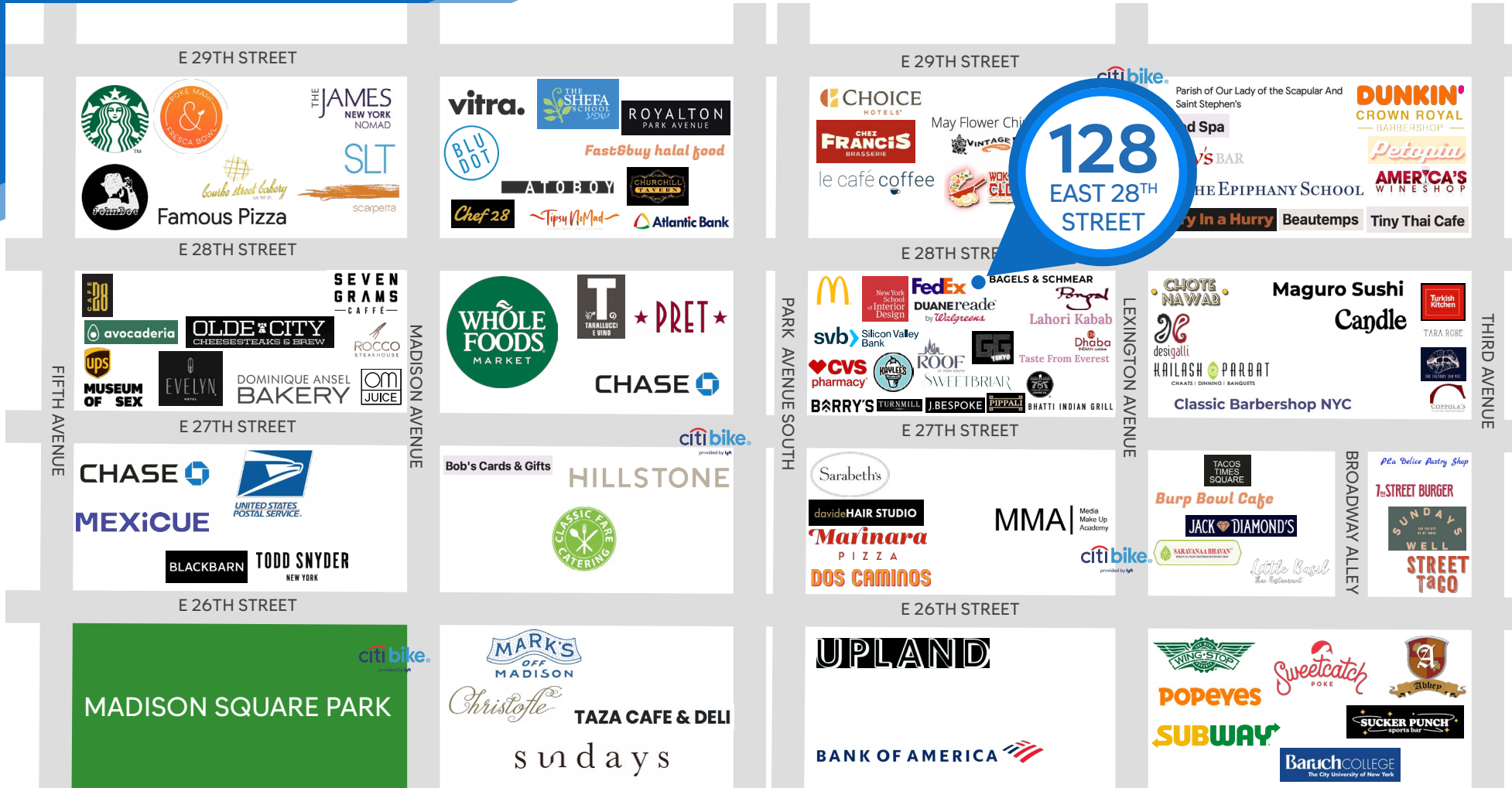
128 EAST 28<sup>TH</sup> STREET

NOMAD, NYC | Between Lexington and Park Avenue South

RETAIL FOR LEASE



NEIGHBORS



**JAMES FAMULARO**  
 President  
 646.658.7373  
 jfamularo@meridiancapital.com

**JORDAN LANGER**  
 Associate  
 212.468.5977  
 jlanger@meridiancapital.com



All information supplied is from sources deemed reliable and is furnished subject to errors, omissions, modifications, removal of the listing from sale or lease, and to any listing conditions, including the rates and manner of payment of commissions for particular offerings imposed by Meridian Capital Group. This information may include estimates and projections prepared by Meridian Capital Group with respect to future events, and these future events may or may not actually occur. Such estimates and projections reflect various assumptions concerning anticipated results. While Meridian Capital Group believes these assumptions are reasonable, there can be no assurance that any of these estimates and projections will be correct. Therefore, actual results may vary materially from these estimates and projections. Any square footage dimensions set forth are approximate.