

4

## ST. MARKS PLACE EAST VILLAGE, NYC

Between Second & Third Avenues

### APPROXIMATE SIZE

Upper Level: 2,500 SF  
Lower Level: 2,500 SF

### POSSESSION

Immediate

### ASKING RENT

Upper Level: ~~\$24,500/Month~~ Reduced  
\$21,500/Month  
Lower Level: ~~\$24,500/Month~~ Reduced  
\$21,500/Month

### TERM

10+ Years

### FRONTAGE

20 FT

### COMMENTS

- Historic Hamilton-Holly House
- New electrical system, plumbing lines, and HVAC
- Steps from NYU and Astor Place
- Heavy 24/7 foot traffic
- Spaces can be leased separately
- All uses considered

### NEIGHBORS

Ray's Pizza • Osakana • Nudibranch • Veselka  
• The Copper Still • Rowdy Rooster • Tsukimi •  
Cagen • Grafton • Craft + Carry • Van Leeuwen

### TRANSPORTATION

6 R W

### JAMES FAMULARO

President

### JOHN ROESCH

Director

212.468.5971

[jroesch@meridiancapital.com](mailto:jroesch@meridiancapital.com)

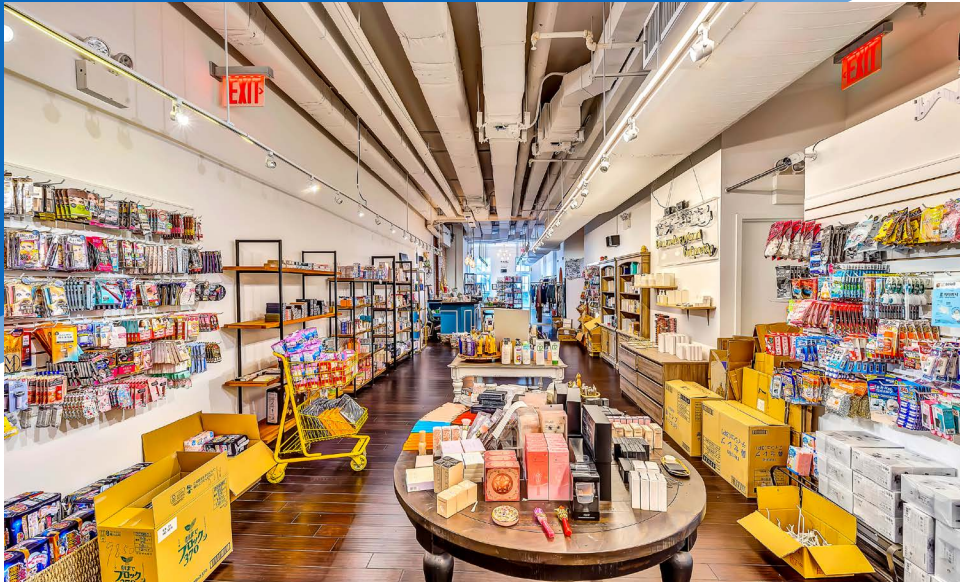




# 4 ST. MARKS PLACE

EAST VILLAGE, NYC | Between Second and Third Avenues

RETAIL FOR LEASE



INTERIOR | UPPER LEVEL

**JAMES FAMULARO**  
President

**JOHN ROESCH**  
Director  
212.468.5971  
jroesch@meridiancapital.com



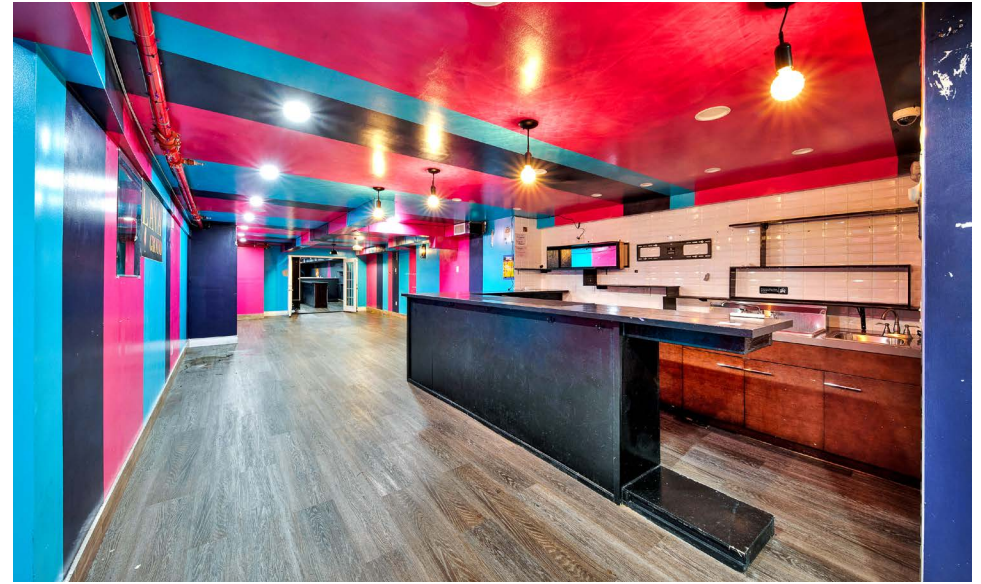
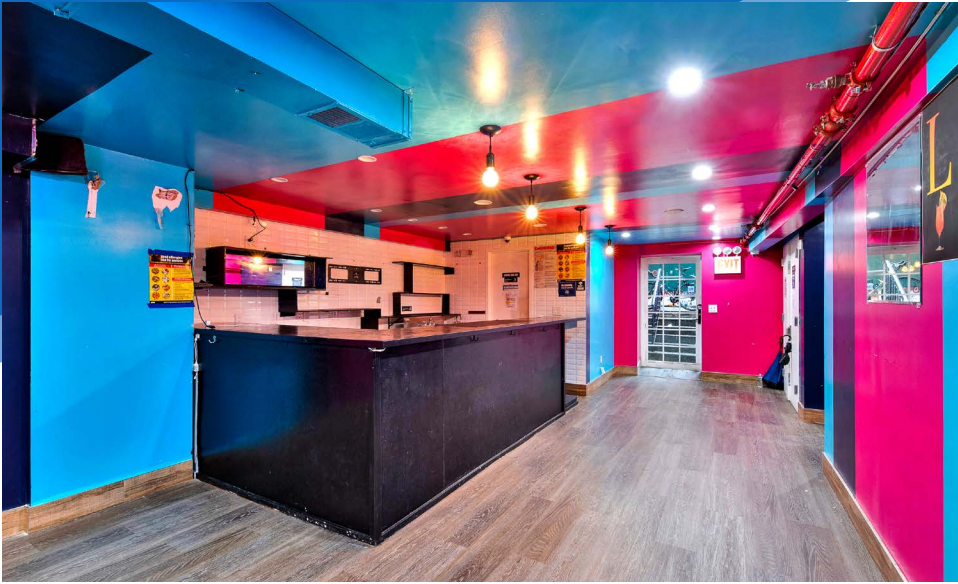
All information supplied is from sources deemed reliable and is furnished subject to errors, omissions, modifications, removal of the listing from sale or lease, and to any listing conditions, including the rates and manner of payment of commissions for particular offerings imposed by Meridian Capital Group. This information may include estimates and projections prepared by Meridian Capital Group with respect to future events, and these future events may or may not actually occur. Such estimates and projections reflect various assumptions concerning anticipated results. While Meridian Capital Group believes these assumptions are reasonable, there can be no assurance that any of these estimates and projections will be correct. Therefore, actual results may vary materially from these estimates and projections. Any square footage dimensions set forth are approximate.



# 4 ST. MARKS PLACE

EAST VILLAGE, NYC | Between Second and Third Avenues

RETAIL FOR LEASE



INTERIOR | LOWER LEVEL



JAMES FAMULARO  
President

JOHN ROESCH  
Director  
212.468.5971  
jroesch@meridiancapital.com

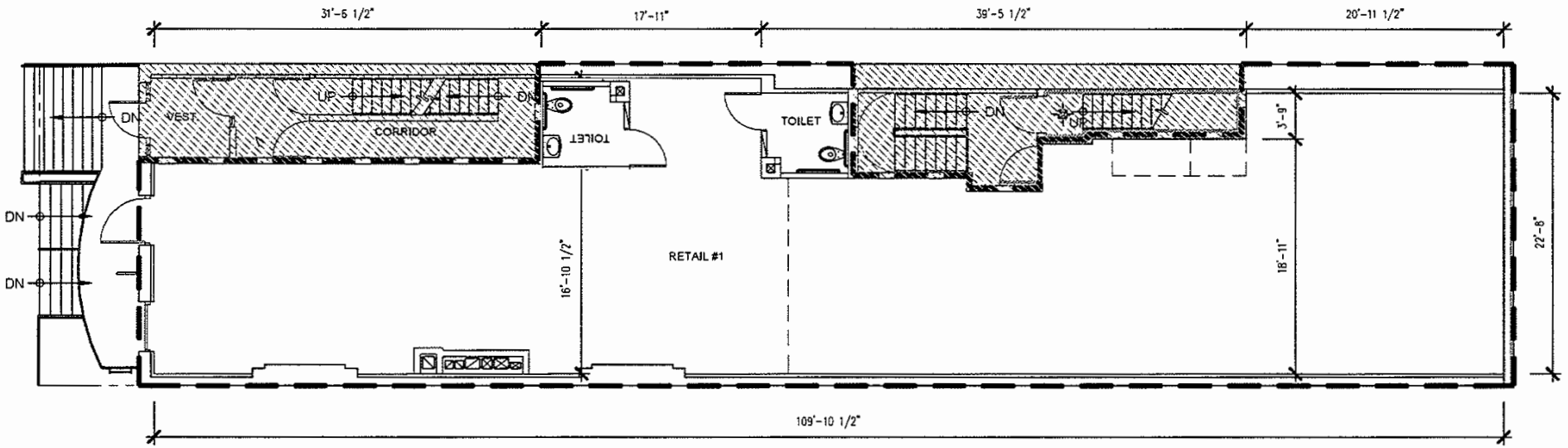


All information supplied is from sources deemed reliable and is furnished subject to errors, omissions, modifications, removal of the listing from sale or lease, and to any listing conditions, including the rates and manner of payment of commissions for particular offerings imposed by Meridian Capital Group. This information may include estimates and projections prepared by Meridian Capital Group with respect to future events, and these future events may or may not actually occur. Such estimates and projections reflect various assumptions concerning anticipated results. While Meridian Capital Group believes these assumptions are reasonable, there can be no assurance that any of these estimates and projections will be correct. Therefore, actual results may vary materially from these estimates and projections. Any square footage dimensions set forth are approximate.

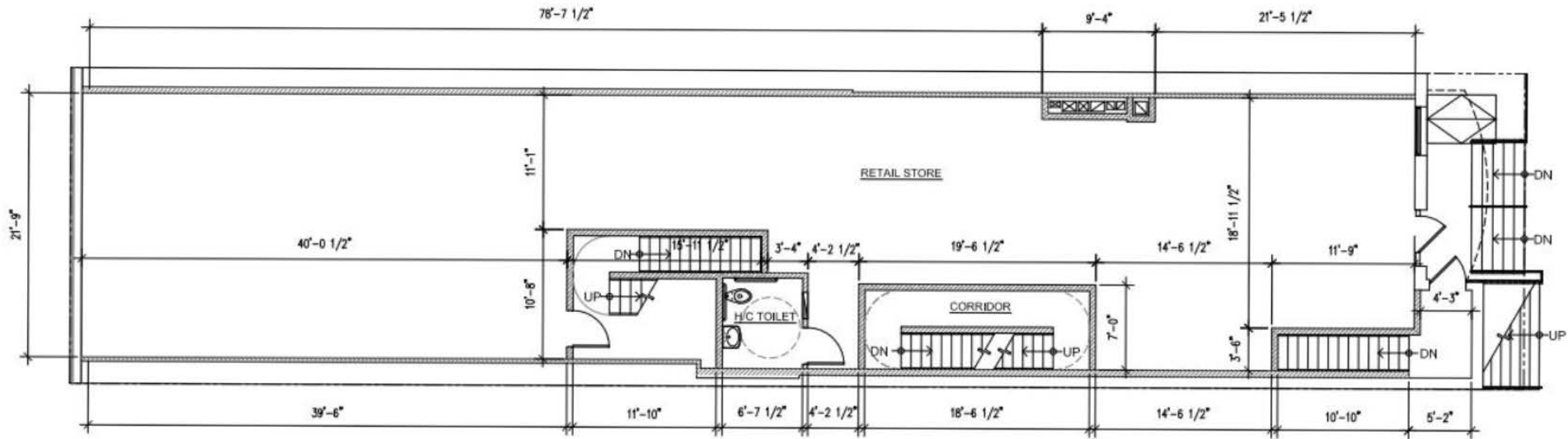
# 4 ST. MARKS PLACE

EAST VILLAGE, NYC | Between Second and Third Avenues

RETAIL FOR LEASE



UPPER LEVEL



LOWER LEVEL

FLOOR PLAN

**JAMES FAMULARO**  
President

**JOHN ROESCH**  
Director  
212.468.5971  
jroesch@meridiancapital.com



All information supplied is from sources deemed reliable and is furnished subject to errors, omissions, modifications, removal of the listing from sale or lease, and to any listing conditions, including the rates and manner of payment of commissions for particular offerings imposed by Meridian Capital Group. This information may include estimates and projections prepared by Meridian Capital Group with respect to future events, and these future events may or may not actually occur. Such estimates and projections reflect various assumptions concerning anticipated results. While Meridian Capital Group believes these assumptions are reasonable, there can be no assurance that any of these estimates and projections will be correct. Therefore, actual results may vary materially from these estimates and projections. Any square footage dimensions set forth are approximate.



# 4 ST. MARKS PLACE

EAST VILLAGE, NYC | Between Second and Third Avenues

RETAIL FOR LEASE



NEIGHBORS

JAMES FAMULARO  
President

JOHN ROESCH  
Director  
212.468.5971  
jroesch@meridiancapital.com



All information supplied is from sources deemed reliable and is furnished subject to errors, omissions, modifications, removal of the listing from sale or lease, and to any listing conditions, including the rates and manner of payment of commissions for particular offerings imposed by Meridian Capital Group. This information may include estimates and projections prepared by Meridian Capital Group with respect to future events, and these future events may or may not actually occur. Such estimates and projections reflect various assumptions concerning anticipated results. While Meridian Capital Group believes these assumptions are reasonable, there can be no assurance that any of these estimates and projections will be correct. Therefore, actual results may vary materially from these estimates and projections. Any square footage dimensions set forth are approximate.