

339 EAST 82ND STREET, NEW YORK, NY

VACANT MULTIFAMILY | CONVERSION OPPORTUNITY | UPPER EAST SIDE | FOR SALE

\$5,050,000

VACANT 4-STORY, 4,928 SF WALK-UP

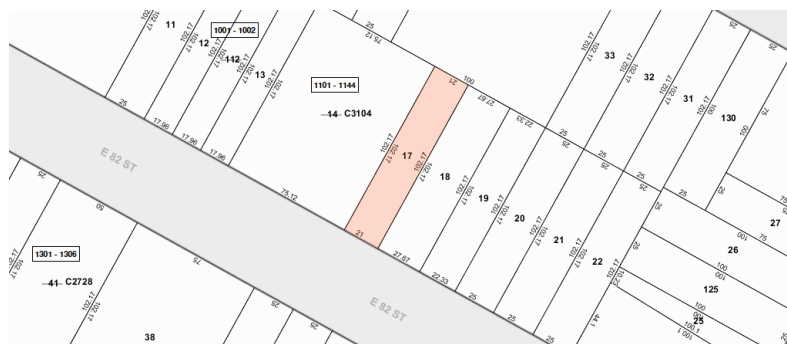
Built in 1920, this vacant 4-story walk-up building is comprised of 4,928 SF and consists of 3 two-bedroom units, 4 one-bedroom units, and 1 studio. The building also includes a private rear garden and air rights. The layout offers flexibility and can be enhanced to house additional units if it were to be renovated, reconfigured, or extended.

Located mid-block between 1st and 2nd Avenue this property is in proximity to multiple transportation hubs including the Q train entrance one block away on 83rd Street and Second Avenue and is steps from the Upper East Side's burgeoning 2nd Avenue retail and restaurant corridor.

PROPERTY INFORMATION

NEIGHBORHOOD	Upper East Side
CROSS STREETS	82 nd Street between 1 st and 2 nd Avenue
BLOCK / LOT	1545 / 17
LOT/BUILT DIMENSIONS	21' x 102.17' Built: 21' x 64'
BUILDING SIZE (SF)	4,928 SF
YEAR BUILT	1920 / 1986
STORIES	4
UNITS	8
TAX CLASS	2B
TAX ASSESSMENT (23/24)	\$466,560
TAXES (23/24)	\$57,232.92
ZONING	R8B

TAX MAP



Thomas A. Donovan

PRESIDENT OF QUEENS INVESTMENT SALES
646.502.3481 | tdonovan@meridiancapital.com

Tommy Lin

VICE PRESIDENT, INVESTMENT SALES
646.502.3484 | tlin@meridiancapital.com

Eugene Kim

VICE PRESIDENT, INVESTMENT SALES
646.502.3483 | ekim@meridiancapital.com



FOR SALE

HIGHLIGHTS

- DELIVERED VACANT
- POTENTIAL CONVERSION OPPORTUNITY
- PROTECTED TAX CLASS 2B
- PRIVATE REAR GARDEN