

16

EAST 27TH STREET NOMAD, NYC

Between Fifth & Madison Avenues

LOWER LEVEL RETAIL FOR LEASE

APPROXIMATE SIZE

2,200 SF

ASKING RENT

\$8,500/Month

POSSESSION

Immediate

TERM

5-10 Years

CEILING HEIGHT

10 FT

COMMENTS

- Situated one block from Madison Square Park in a luxury condo building
- Dedicated elevator in place
- Perfect for health, wellness, studio, and professional uses

NEIGHBORS

Avocaderia • The Ned • The Ritz Carlton • 230 Fifth • Little Beet • Scarpetta • SLT • Whole Foods

TRANSPORTATION



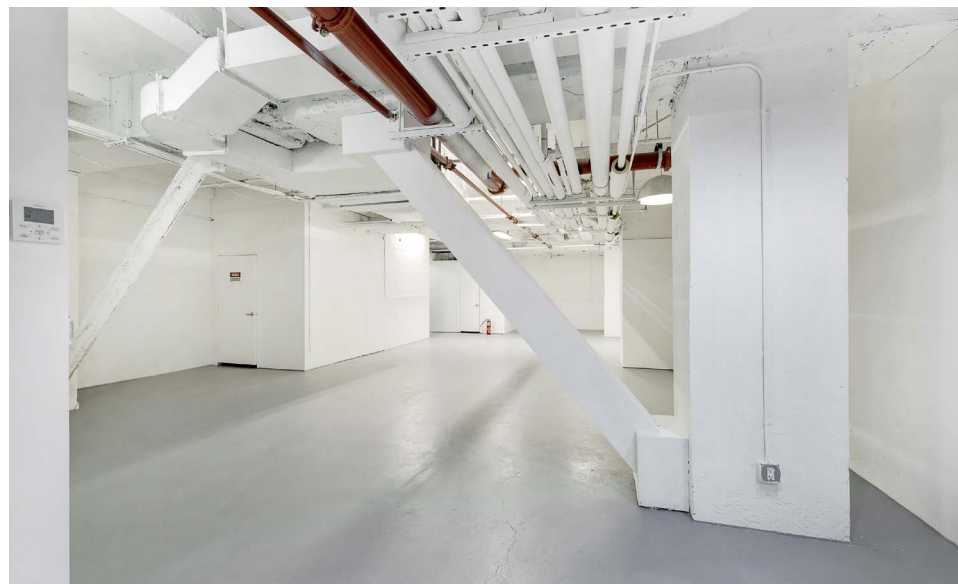
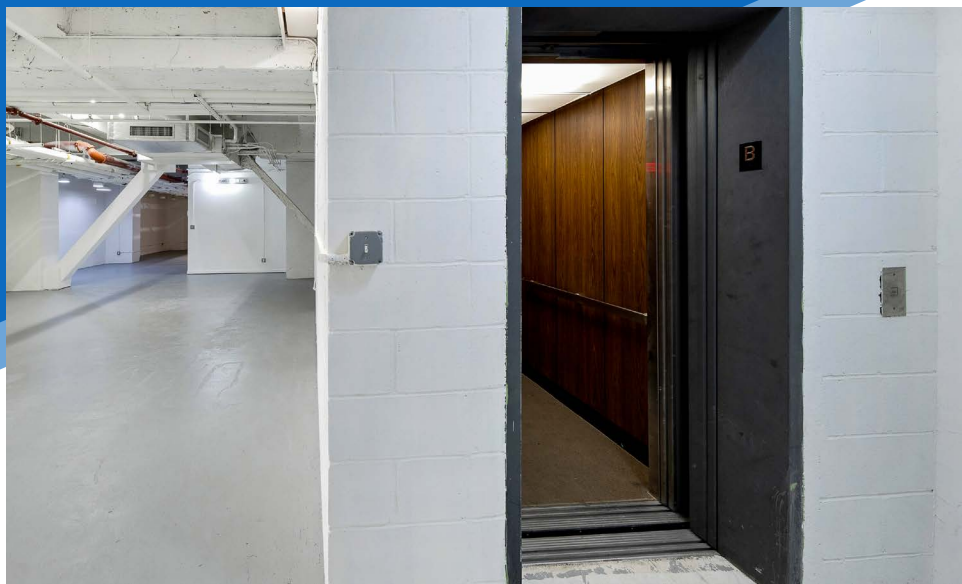
PROPERTY INFORMATION

JAMES FAMULARO
President

JACOB MAYER
Associate
212.468.5926
jmayer@meridiancapital.com



All information supplied is from sources deemed reliable and is furnished subject to errors, omissions, modifications, removal of the listing from sale or lease, and to any listing conditions, including the rates and manner of payment of commissions for particular offerings imposed by Meridian Capital Group. This information may include estimates and projections prepared by Meridian Capital Group with respect to future events, and these future events may or may not actually occur. Such estimates and projections reflect various assumptions concerning anticipated results. While Meridian Capital Group believes these assumptions are reasonable, there can be no assurance that any of these estimates and projections will be correct. Therefore, actual results may vary materially from these estimates and projections. Any square footage dimensions set forth are approximate.



INTERIOR

JAMES FAMULARO
President

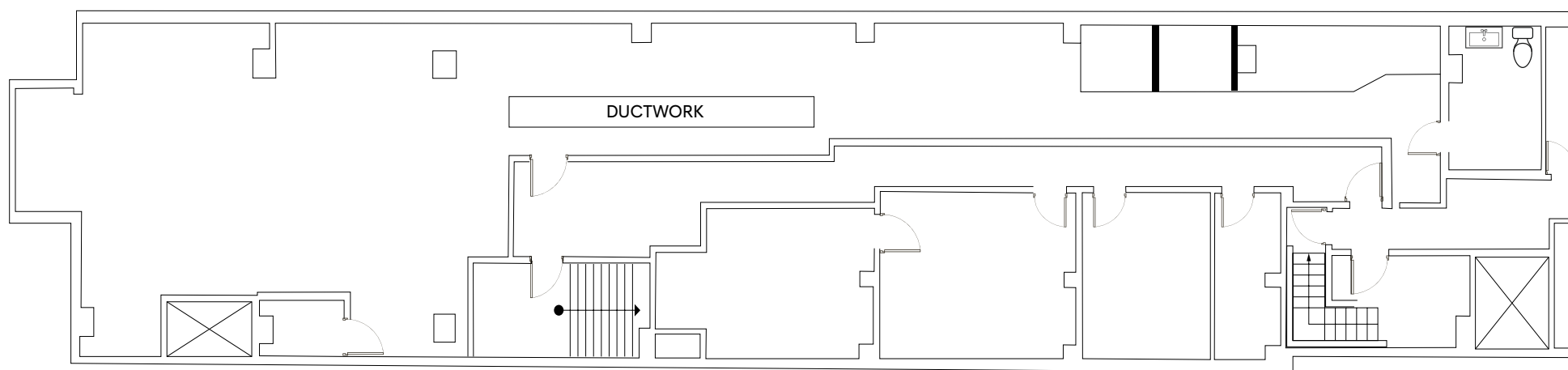
JACOB MAYER
Associate
212.468.5926
jmayer@meridiancapital.com



All information supplied is from sources deemed reliable and is furnished subject to errors, omissions, modifications, removal of the listing from sale or lease, and to any listing conditions, including the rates and manner of payment of commissions for particular offerings imposed by Meridian Capital Group. This information may include estimates and projections prepared by Meridian Capital Group with respect to future events, and these future events may or may not actually occur. Such estimates and projections reflect various assumptions concerning anticipated results. While Meridian Capital Group believes these assumptions are reasonable, there can be no assurance that any of these estimates and projections will be correct. Therefore, actual results may vary materially from these estimates and projections. Any square footage dimensions set forth are approximate.

16 EAST 27TH STREET
NOMAD, NYC | Between Fifth and Madison Avenues

LOWER LEVEL RETAIL FOR LEASE



FLOOR PLAN

JAMES FAMULARO
President

JACOB MAYER
Associate
212.468.5926
jmayer@meridiancapital.com



All information supplied is from sources deemed reliable and is furnished subject to errors, omissions, modifications, removal of the listing from sale or lease, and to any listing conditions, including the rates and manner of payment of commissions for particular offerings imposed by Meridian Capital Group. This information may include estimates and projections prepared by Meridian Capital Group with respect to future events, and these future events may or may not actually occur. Such estimates and projections reflect various assumptions concerning anticipated results. While Meridian Capital Group believes these assumptions are reasonable, there can be no assurance that any of these estimates and projections will be correct. Therefore, actual results may vary materially from these estimates and projections. Any square footage dimensions set forth are approximate.

NOMAD, NYC | Between Fifth and Madison Avenues

BLANK SLATE | MONDRIAN



JACOB MAYER
Associate
212.468.5926
jmayer@meridiancapital.com



MERIDIAN
RETAIL LEASING

All information supplied is from sources deemed reliable and is furnished subject to errors, omissions, modifications, removal of the listing from sale or lease, and to any listing conditions, including the rates and manner of payment of commissions for particular offerings imposed by Meridian Capital Group. This information may include estimates and projections prepared by Meridian Capital Group with respect to future events, and these future events may or may not actually occur. Such estimates and projections reflect various assumptions concerning anticipated results. While Meridian Capital Group believes these assumptions are reasonable, there can be no assurance that any of these estimates and projections will be correct. Therefore, actual results may vary materially from these estimates and projections. Any square footage dimensions set forth are approximate.