

353

WEST 57TH STREET COLUMBUS CIRCLE, NYC

Between Eighth & Ninth Avenues

RETAIL FOR LEASE

APPROXIMATE SIZE

Space A: 5,603 SF
Space B: 6,952 SF + 5,145 SF Lower Level
Space C: 1,600 SF

ASKING RENT

Space A & B: \$100 PSF
Space C: \$120 PSF

POSSESSION

Immediate

TERM

10-15 Years

FRONTAGE

93 FT

COMMENTS

- Prime inline retail space on Billionaire's Row
- Spaces can be leased separately or combined
- Steps from Central Park and Columbus Circle

NEIGHBORS

Williams Sonoma • Bareburger • Baked by Melissa • MAC Cosmetics • Stuart Weitzman • Wolford • Whole Foods • Bad Roman • Equinox

TRANSPORTATION



PROPERTY INFORMATION

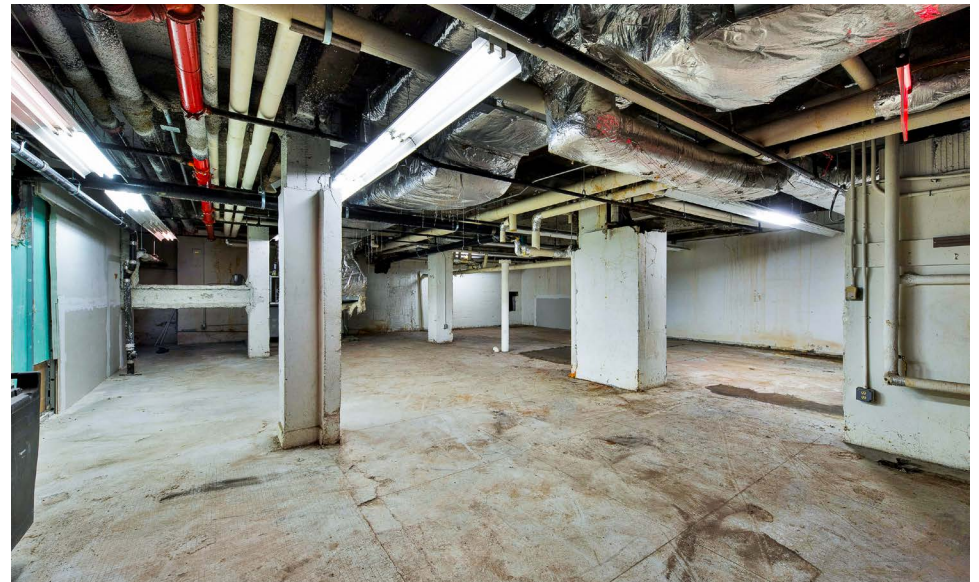
JAMES FAMULARO
President

BEN BIBERAJ
Senior Director
703.434.1461
bbiberaj@meridiancapital.com

CAMERON PARSON
Associate
212.468.5954
cparson@meridiancapital.com



All information supplied is from sources deemed reliable and is furnished subject to errors, omissions, modifications, removal of the listing from sale or lease, and to any listing conditions, including the rates and manner of payment of commissions for particular offerings imposed by Meridian Capital Group. This information may include estimates and projections prepared by Meridian Capital Group with respect to future events, and these future events may or may not actually occur. Such estimates and projections reflect various assumptions concerning anticipated results. While Meridian Capital Group believes these assumptions are reasonable, there can be no assurance that any of these estimates and projections will be correct. Therefore, actual results may vary materially from these estimates and projections. Any square footage dimensions set forth are approximate.



INTERIOR

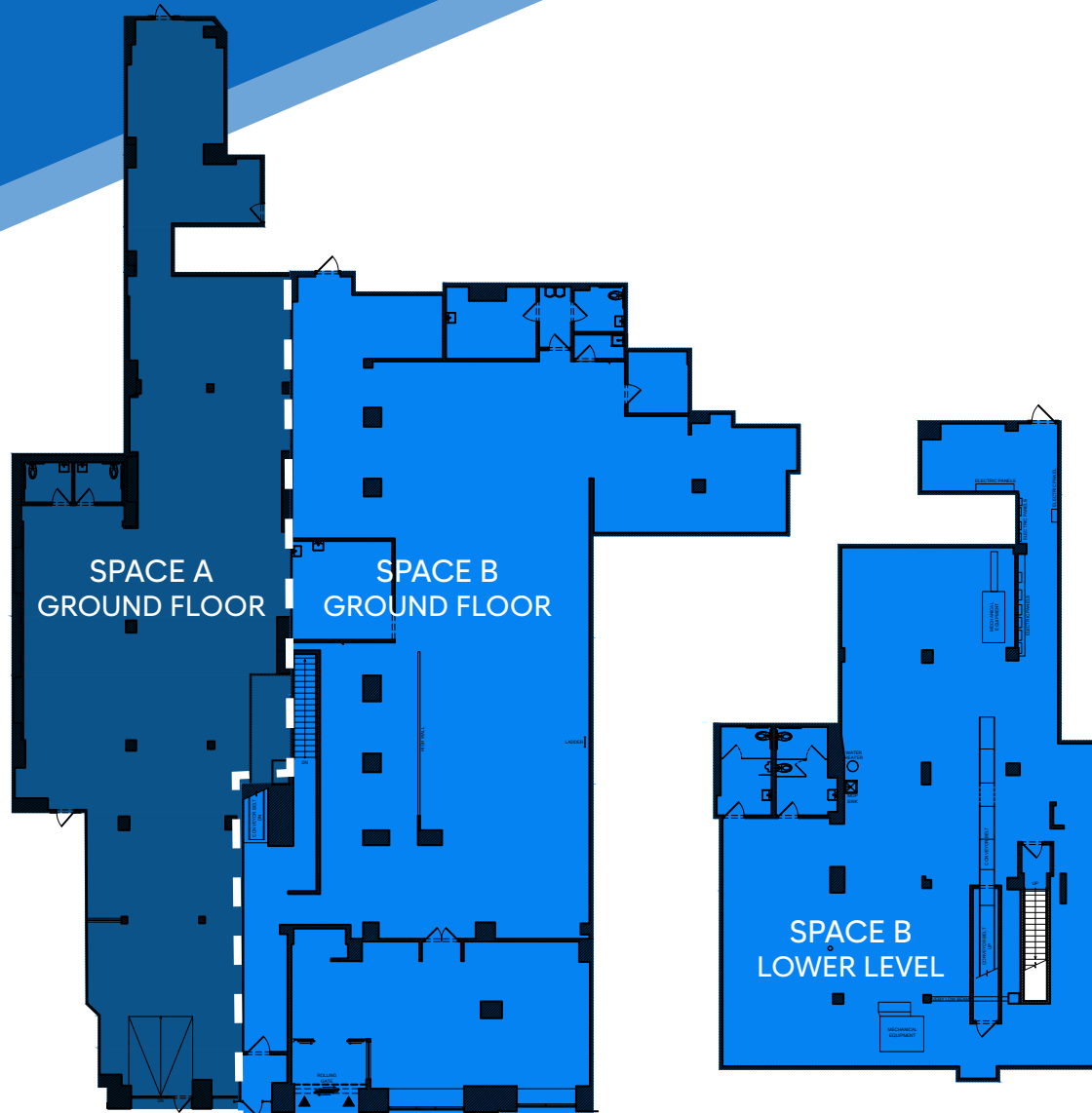
JAMES FAMULARO
President

BEN BIBERAJ
Senior Director
703.434.1461
bbiberaj@meridiancapital.com

CAMERON PARSON
Associate
212.468.5954
cparson@meridiancapital.com



FLOOR PLAN



JAMES FAMULARO
President

BEN BIBERAJ
Senior Director
703.434.1461
bbiberaj@meridiancapital.com

CAMERON PARSON
Associate
212.468.5954
cparson@meridiancapital.com



NEIGHBORS

353 WEST 57TH STREET

NEIGHBORS: FORDHAM UNIVERSITY, NEW YORK INSTITUTE OF TECHNOLOGY, CENTRAL PARK, TRUMP INTERNATIONAL HOTEL & TOWER, JEAN-GEORGES.

STREETS: W 60TH STREET, W 59TH STREET, W 58TH STREET, W 57TH STREET, W 56TH STREET, COLUMBUS AVENUE, NINTH AVENUE, EIGHTH AVENUE, COLUMBUS CIRCLE.

BRANDS AND SERVICES: UNITED STATES POSTAL SERVICE, THE YARD, H&M, DIPTYQUE, EQUINOX, Bad Roman, BARMASA, TUMI, HUGO BOSS, MICHAEL KORS, J.CREW, WHOLE FOODS MARKET, EILEEN FISHER, J.CREW, FIRST REPUBLIC, sunglass hut, AVEDA, SWAROVSKI, Jp, per se, MO Lounge, BANG BAR BY MOMOFUKU, WOLFORD, NORTH BAR, MAC, STUART WEITZMAN, COACH, WILLIAMS SONOMA, CHASE, milk, elf, CVS pharmacy, NORDSTROM, T.J. MAXX, CITIZENS BANK OF AMERICA, AT&T, le café coffee, GNC LIVE WELL, citi bike, Panera BREAD, FedEx, Sur la table, HEARST, UPS, YOLO, SEILATINO ITALIAN GOURMET, NAKED BIRD, Pop's Pizzas, DUNKIN', PARIS BAGUETTE, jost salad, Starbucks, DUANE Reade by Walgreens, juice GENERATION, Amore Pizza Restaurant, Birch Coffee, D.J. REYNOLDS, ABA Turkish Restaurant, Justino's Pizzeria, Oh-K-DOG & EGG TORST, MASSERIA DEL VINI, FRAMME, Mount Sinai, CVS pharmacy, Santander, Magnolia Bakery EST. 1996, TURNSTILE UNDERGROUND MARKET, STARBUCKS.

JAMES FAMULARO
 President

BEN BIBERAJ
 Senior Director
 703.434.1461
 bbiberaj@meridiancapital.com

CAMERON PARSON
 Associate
 212.468.5954
 cparson@meridiancapital.com



All information supplied is from sources deemed reliable and is furnished subject to errors, omissions, modifications, removal of the listing from sale or lease, and to any listing conditions, including the rates and manner of payment of commissions for particular offerings imposed by Meridian Capital Group. This information may include estimates and projections prepared by Meridian Capital Group with respect to future events, and these future events may or may not actually occur. Such estimates and projections reflect various assumptions concerning anticipated results. While Meridian Capital Group believes these assumptions are reasonable, there can be no assurance that any of these estimates and projections will be correct. Therefore, actual results may vary materially from these estimates and projections. Any square footage dimensions set forth are approximate.