

330

SPRING STREET HUDSON SQUARE, NYC

Between Greenwich & Washington
Streets

APPROXIMATE SIZE

Inline Ground Floor: 2,500 SF

ASKING RENT

~~\$33,000/Month~~ Reduced
\$16,000/Month

POSSESSION

Immediate

TERM

5-10 Years

FRONTAGE

15 FT

COMMENTS

- Brand-new glass storefront
- Recently white-boxed
- Located one block from Google and Disney's brand-new headquarters and in the heart of the Hudson Square "development boom"
- All dry uses considered
- 50% reduction on original asking rent

NEIGHBORS

Paul's Casablanca • Sweetgreen • Ear Inn •
Lazy Point • Solidcore • Arlo SoHo • La Sirene
• Trader Joe's • Houseman • Hotel Hugo

TRANSPORTATION



PROPERTY INFORMATION

JAMES FAMULARO
President

JOHN ROESCH
Director
212.468.5971
jroesch@meridiancapital.com

BENNY STERNBERG
Associate
212.468.5918
bsternberg@meridiancapital.com



330 SPRING STREET

HUDSON SQUARE, NYC | Between Greenwich and Washington Streets

RETAIL FOR LEASE



INTERIOR

JAMES FAMULARO
President

JOHN ROESCH
Director
212.468.5971
jroesch@meridiancapital.com

BENNY STERNBERG
Associate
212.468.5918
bsternberg@meridiancapital.com



All information supplied is from sources deemed reliable and is furnished subject to errors, omissions, modifications, removal of the listing from sale or lease, and to any listing conditions, including the rates and manner of payment of commissions for particular offerings imposed by Meridian Capital Group. This information may include estimates and projections prepared by Meridian Capital Group with respect to future events, and these future events may or may not actually occur. Such estimates and projections reflect various assumptions concerning anticipated results. While Meridian Capital Group believes these assumptions are reasonable, there can be no assurance that any of these estimates and projections will be correct. Therefore, actual results may vary materially from these estimates and projections. Any square footage dimensions set forth are approximate.

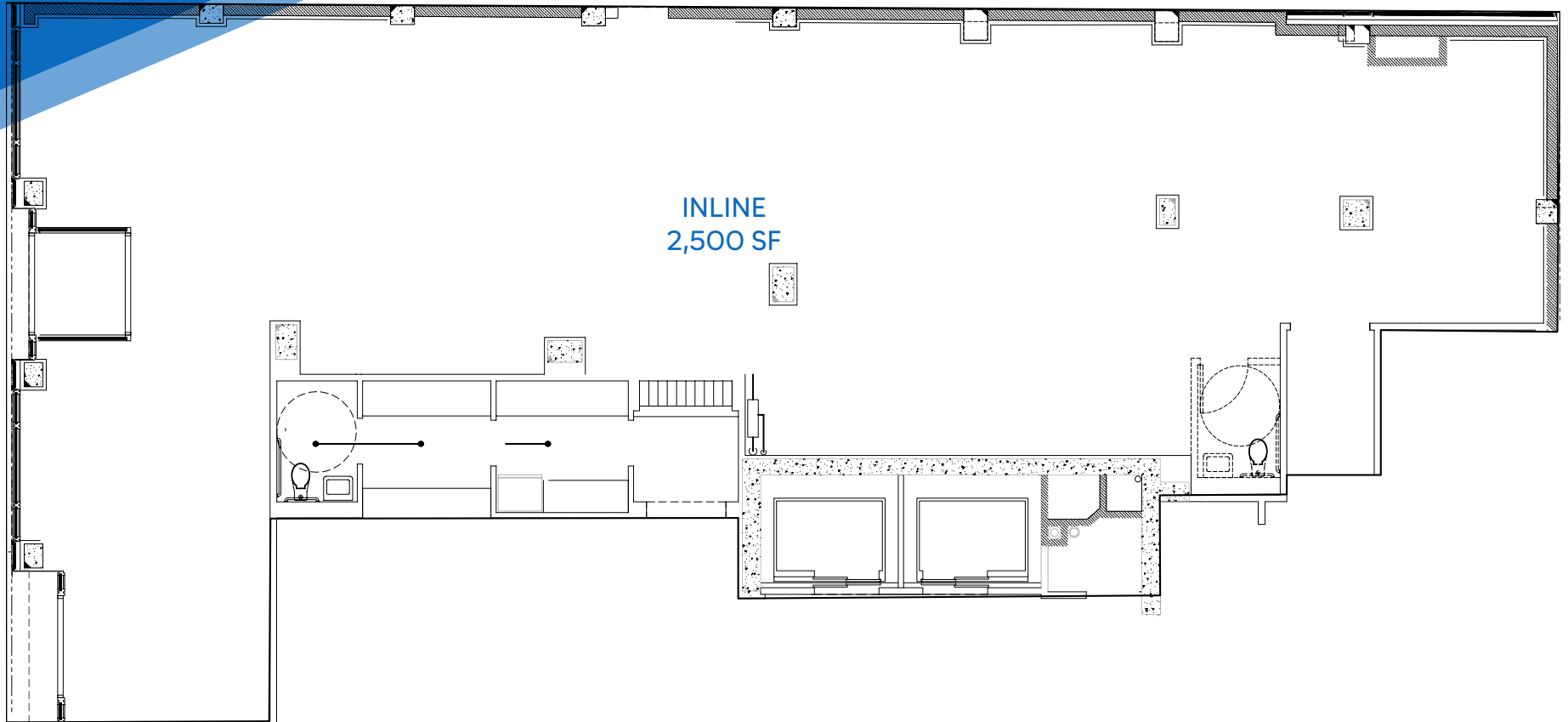
330 SPRING STREET

HUDSON SQUARE, NYC | Between Greenwich and Washington Streets

RETAIL FOR LEASE

FLOOR PLAN

SPRING STREET



INLINE
2,500 SF

JAMES FAMULARO
President

JOHN ROESCH
Director
212.468.5971
jroesch@meridiancapital.com

BENNY STERNBERG
Associate
212.468.5918
bsternberg@meridiancapital.com



All information supplied is from sources deemed reliable and is furnished subject to errors, omissions, modifications, removal of the listing from sale or lease, and to any listing conditions, including the rates and manner of payment of commissions for particular offerings imposed by Meridian Capital Group. This information may include estimates and projections prepared by Meridian Capital Group with respect to future events, and these future events may or may not actually occur. Such estimates and projections reflect various assumptions concerning anticipated results. While Meridian Capital Group believes these assumptions are reasonable, there can be no assurance that any of these estimates and projections will be correct. Therefore, actual results may vary materially from these estimates and projections. Any square footage dimensions set forth are approximate.

