

330

SPRING STREET

HUDSON SQUARE, NYC

Southeast Corner of Spring &
Washington Streets

RETAIL FOR LEASE

APPROXIMATE SIZE

Ground Floor: 3,000 SF
Selling Lower Level: 1,500 SF

ASKING RENT

Upon Request

POSSESSION

Immediate

TERM

Short or Long Term Lease will be considered

FRONTAGE

80 FT Wraparound

COMMENTS

- Wraparound glass frontage
- Potential for outdoor seating
- Gas line in the space
- Located one block from Google and Disney's brand-new headquarters and in the heart of the Hudson Square "development boom"
- Recently white-boxed
- All uses considered

NEIGHBORS

Paul's Casablanca • Sweetgreen • Ear Inn •
Lazy Point • Solidcore • Arlo SoHo • La Sirene
• Trader Joe's • Houseman • Hotel Hugo

TRANSPORTATION



JAMES FAMULARO

President

JOHN ROESCH

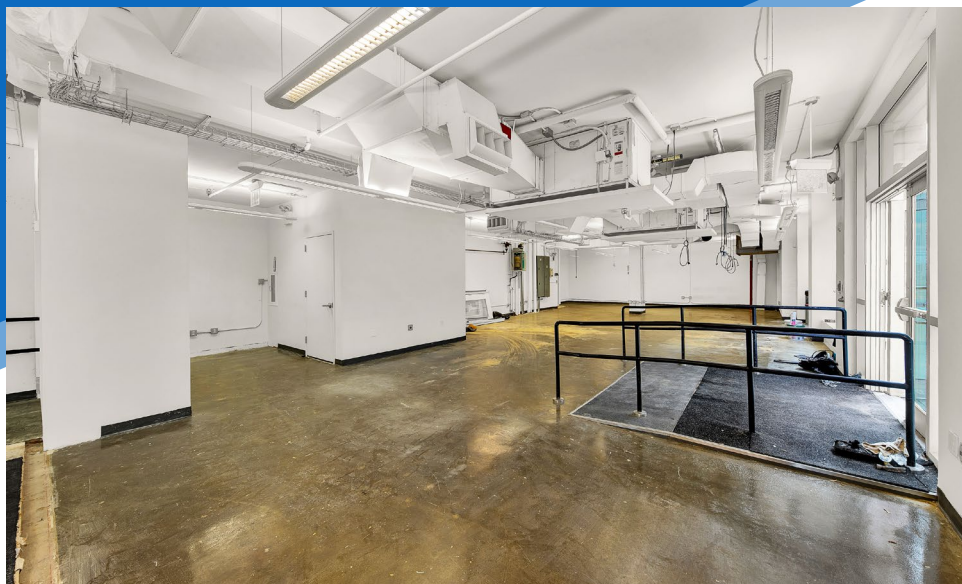
Director
212.468.5971
jroesch@meridiancapital.com

GARRETT KELLY

Director
212.468.5939
gkelly@meridiancapital.com



All information supplied is from sources deemed reliable and is furnished subject to errors, omissions, modifications, removal of the listing from sale or lease, and to any listing conditions, including the rates and manner of payment of commissions for particular offerings imposed by Meridian Capital Group. This information may include estimates and projections prepared by Meridian Capital Group with respect to future events, and these future events may or may not actually occur. Such estimates and projections reflect various assumptions concerning anticipated results. While Meridian Capital Group believes these assumptions are reasonable, there can be no assurance that any of these estimates and projections will be correct. Therefore, actual results may vary materially from these estimates and projections. Any square footage dimensions set forth are approximate.



INTERIOR | GROUND FLOOR

JAMES FAMULARO
President

JOHN ROESCH
Director
212.468.5971
jroesch@meridiancapital.com

GARRETT KELLY
Director
212.468.5939
gkelly@meridiancapital.com



All information supplied is from sources deemed reliable and is furnished subject to errors, omissions, modifications, removal of the listing from sale or lease, and to any listing conditions, including the rates and manner of payment of commissions for particular offerings imposed by Meridian Capital Group. This information may include estimates and projections prepared by Meridian Capital Group with respect to future events, and these future events may or may not actually occur. Such estimates and projections reflect various assumptions concerning anticipated results. While Meridian Capital Group believes these assumptions are reasonable, there can be no assurance that any of these estimates and projections will be correct. Therefore, actual results may vary materially from these estimates and projections. Any square footage dimensions set forth are approximate.

330 SPRING STREET

HUDSON SQUARE, NYC | Between Greenwich and Washington Streets

RETAIL FOR LEASE



INTERIOR | LOWER LEVEL

JAMES FAMULARO
President

JOHN ROESCH
Director
212.468.5971
jroesch@meridiancapital.com

GARRETT KELLY
Director
212.468.5939
gkelly@meridiancapital.com



All information supplied is from sources deemed reliable and is furnished subject to errors, omissions, modifications, removal of the listing from sale or lease, and to any listing conditions, including the rates and manner of payment of commissions for particular offerings imposed by Meridian Capital Group. This information may include estimates and projections prepared by Meridian Capital Group with respect to future events, and these future events may or may not actually occur. Such estimates and projections reflect various assumptions concerning anticipated results. While Meridian Capital Group believes these assumptions are reasonable, there can be no assurance that any of these estimates and projections will be correct. Therefore, actual results may vary materially from these estimates and projections. Any square footage dimensions set forth are approximate.

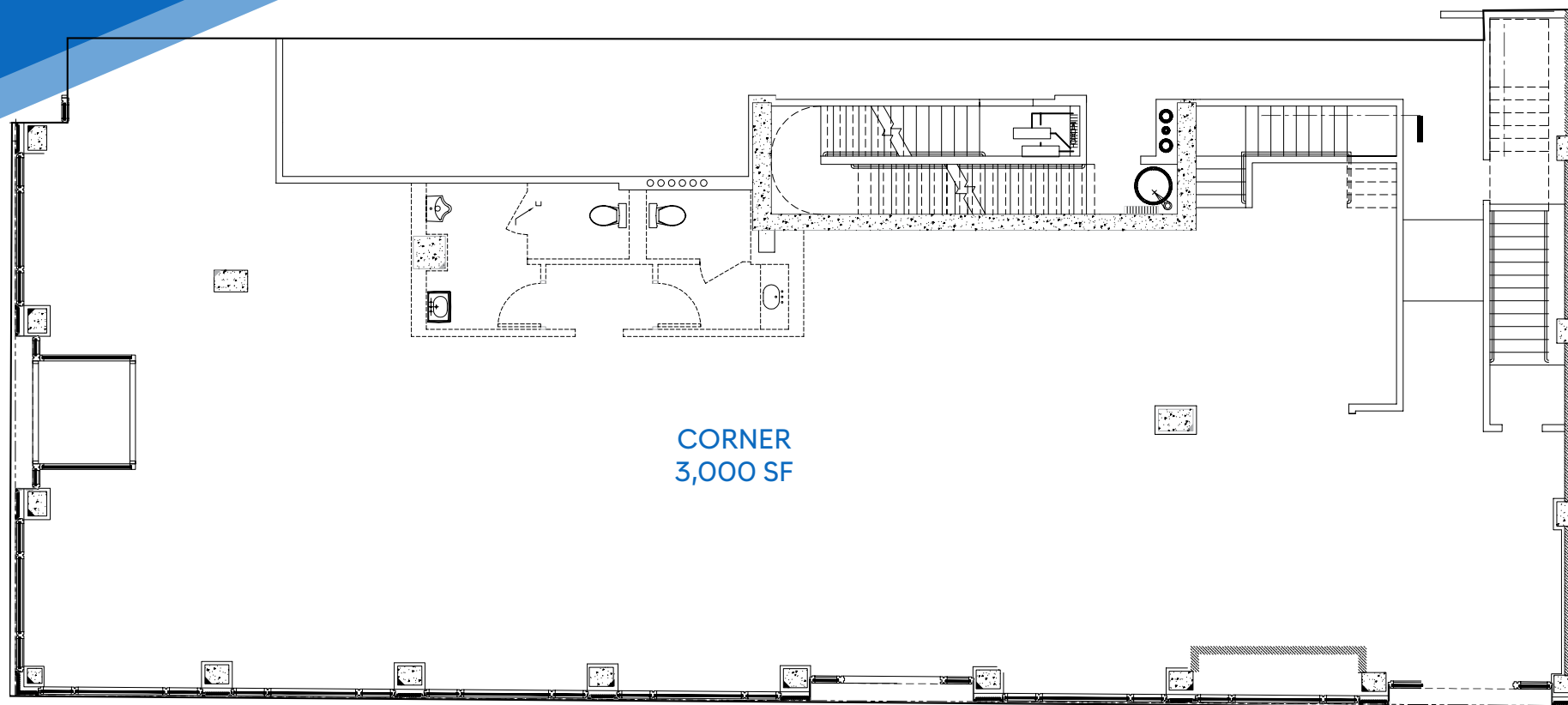
330 SPRING STREET

HUDSON SQUARE, NYC | Between Greenwich and Washington Streets

RETAIL FOR LEASE

FLOOR PLAN | GROUND FLOOR

SPRING STREET



CORNER
3,000 SF

JAMES FAMULARO
President

JOHN ROESCH
Director
212.468.5971
jroesch@meridiancapital.com

GARRETT KELLY
Director
212.468.5939
gkelly@meridiancapital.com



All information supplied is from sources deemed reliable and is furnished subject to errors, omissions, modifications, removal of the listing from sale or lease, and to any listing conditions, including the rates and manner of payment of commissions for particular offerings imposed by Meridian Capital Group. This information may include estimates and projections prepared by Meridian Capital Group with respect to future events, and these future events may or may not actually occur. Such estimates and projections reflect various assumptions concerning anticipated results. While Meridian Capital Group believes these assumptions are reasonable, there can be no assurance that any of these estimates and projections will be correct. Therefore, actual results may vary materially from these estimates and projections. Any square footage dimensions set forth are approximate.

330 SPRING STREET

HUDSON SQUARE, NYC | Between Greenwich and Washington Streets

RETAIL FOR LEASE

FLOOR PLAN | LOWER LEVEL



JAMES FAMULARO
President

JOHN ROESCH
Director
212.468.5971
jroesch@meridiancapital.com

GARRETT KELLY
Director
212.468.5939
gkelly@meridiancapital.com



All information supplied is from sources deemed reliable and is furnished subject to errors, omissions, modifications, removal of the listing from sale or lease, and to any listing conditions, including the rates and manner of payment of commissions for particular offerings imposed by Meridian Capital Group. This information may include estimates and projections prepared by Meridian Capital Group with respect to future events, and these future events may or may not actually occur. Such estimates and projections reflect various assumptions concerning anticipated results. While Meridian Capital Group believes these assumptions are reasonable, there can be no assurance that any of these estimates and projections will be correct. Therefore, actual results may vary materially from these estimates and projections. Any square footage dimensions set forth are approximate.

330 SPRING STREET

HUDSON SQUARE, NYC | Between Greenwich and Washington Streets

RETAIL FOR LEASE

NEIGHBORS

330
SPRING
STREET



JAMES FAMULARO
President

JOHN ROESCH
Director
212.468.5971
jroesch@meridiancapital.com

GARRETT KELLY
Director
212.468.5939
gkelly@meridiancapital.com

MERIDIAN
RETAIL LEASING

All information supplied is from sources deemed reliable and is furnished subject to errors, omissions, modifications, removal of the listing from sale or lease, and to any listing conditions, including the rates and manner of payment of commissions for particular offerings imposed by Meridian Capital Group. This information may include estimates and projections prepared by Meridian Capital Group with respect to future events, and these future events may or may not actually occur. Such estimates and projections reflect various assumptions concerning anticipated results. While Meridian Capital Group believes these assumptions are reasonable, there can be no assurance that any of these estimates and projections will be correct. Therefore, actual results may vary materially from these estimates and projections. Any square footage dimensions set forth are approximate.