

# 226

## WEST 37<sup>TH</sup> STREET GARMENT DISTRICT, NYC

Between Seventh & Eighth Avenues

### APPROXIMATE SIZE

Second Floor: 5,600 SF

### ASKING RENT

\$35 PSF

### POSSESSION

90 Days

### TERM

10 Years

### COMMENTS

- Beautiful second floor retail space in the heart of the Garment District
- Currently a full-service bridal shop
- Steps from Penn Station
- Elevators and bathrooms in place
- All uses considered

### NEIGHBORS

Orange Theory • Dunkin' • 2 Bros Pizza • Hilton • Crossfit NYC • Taste Kitchen • Lightbox • Gregory's Coffee • Chick-Fil-A • Five Guys • Longo Bros

### TRANSPORTATION



PROPERTY INFORMATION

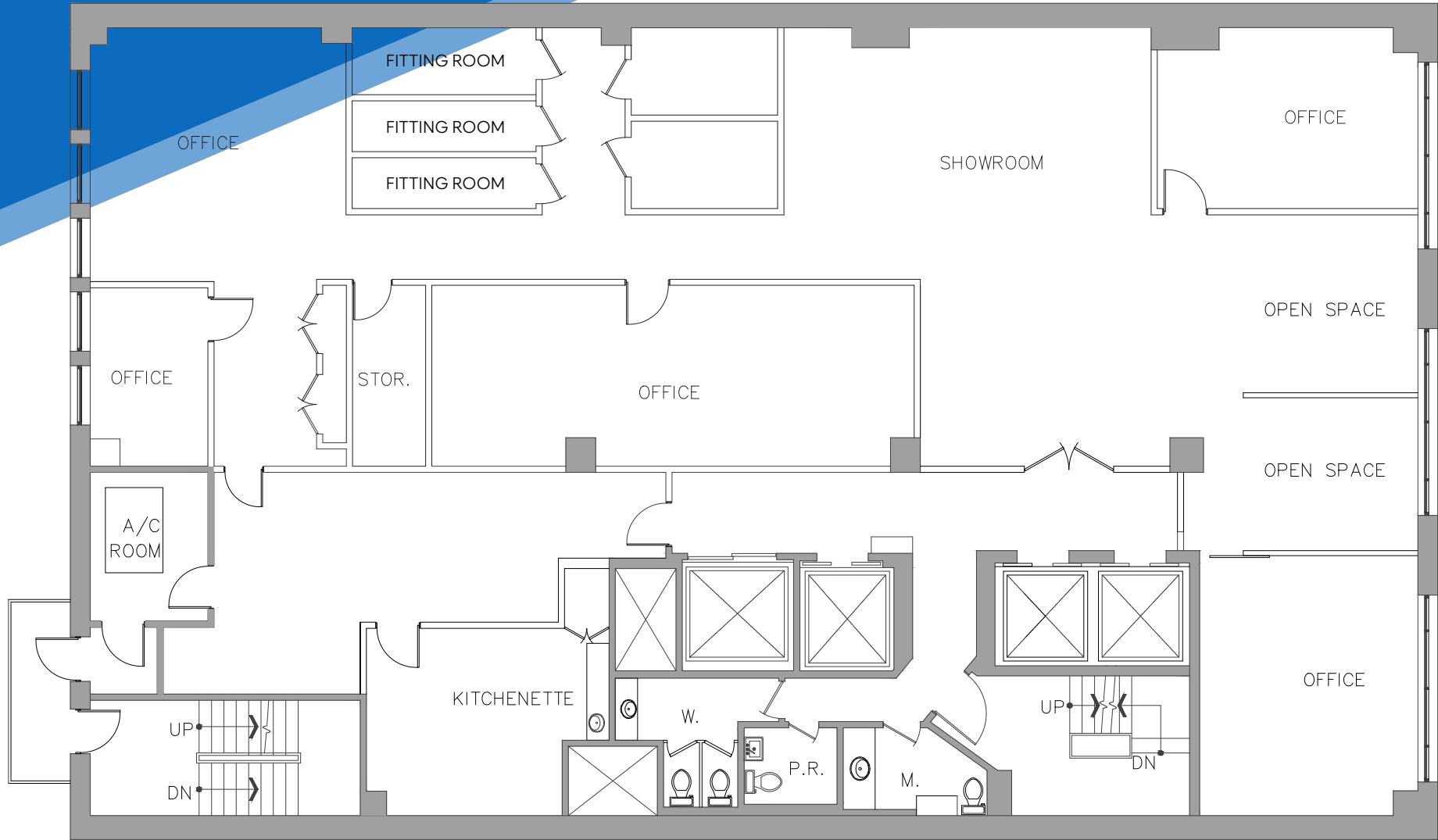
**JAMES FAMULARO**  
President

**BENNY STERNBERG**  
Associate  
212.468.5918  
bsternberg@meridiancapital.com

**MANUELA BOMENY**  
Associate  
212.468.5904  
mbomeny@meridiancapital.com



FLOOR PLAN



WEST 37TH STREET

**JAMES FAMULARO**  
 President

**BENNY STERNBERG**  
 Associate  
 212.468.5918  
 bsternberg@meridiancapital.com

**MANUELA BOMENY**  
 Associate  
 212.468.5904  
 mbomeny@meridiancapital.com



All information supplied is from sources deemed reliable and is furnished subject to errors, omissions, modifications, removal of the listing from sale or lease, and to any listing conditions, including the rates and manner of payment of commissions for particular offerings imposed by Meridian Capital Group. This information may include estimates and projections prepared by Meridian Capital Group with respect to future events, and these future events may or may not actually occur. Such estimates and projections reflect various assumptions concerning anticipated results. While Meridian Capital Group believes these assumptions are reasonable, there can be no assurance that any of these estimates and projections will be correct. Therefore, actual results may vary materially from these estimates and projections. Any square footage dimensions set forth are approximate.



NEIGHBORS

JAMES FAMULARO  
 President

BENNY STERNBERG  
 Associate  
 212.468.5918  
 bsternberg@meridiancapital.com

MANUELA BOMENY  
 Associate  
 212.468.5904  
 mbomeny@meridiancapital.com



All information supplied is from sources deemed reliable and is furnished subject to errors, omissions, modifications, removal of the listing from sale or lease, and to any listing conditions, including the rates and manner of payment of commissions for particular offerings imposed by Meridian Capital Group. This information may include estimates and projections prepared by Meridian Capital Group with respect to future events, and these future events may or may not actually occur. Such estimates and projections reflect various assumptions concerning anticipated results. While Meridian Capital Group believes these assumptions are reasonable, there can be no assurance that any of these estimates and projections will be correct. Therefore, actual results may vary materially from these estimates and projections. Any square footage dimensions set forth are approximate.