

# 1638

## PARK AVENUE EAST HARLEM, NYC

Corner of 116<sup>th</sup> Street & Park Avenue

RETAIL FOR LEASE

### APPROXIMATE SIZE

Space A: 500 SF  
Space B: 1,011 SF

### ASKING RENT

Space A: \$5,000/Month  
Space B: \$8,425/Month

### POSSESSION

Q1 2024

### TERM

5-15 Years

### FRONTAGE

18-79 FT

### COMMENTS

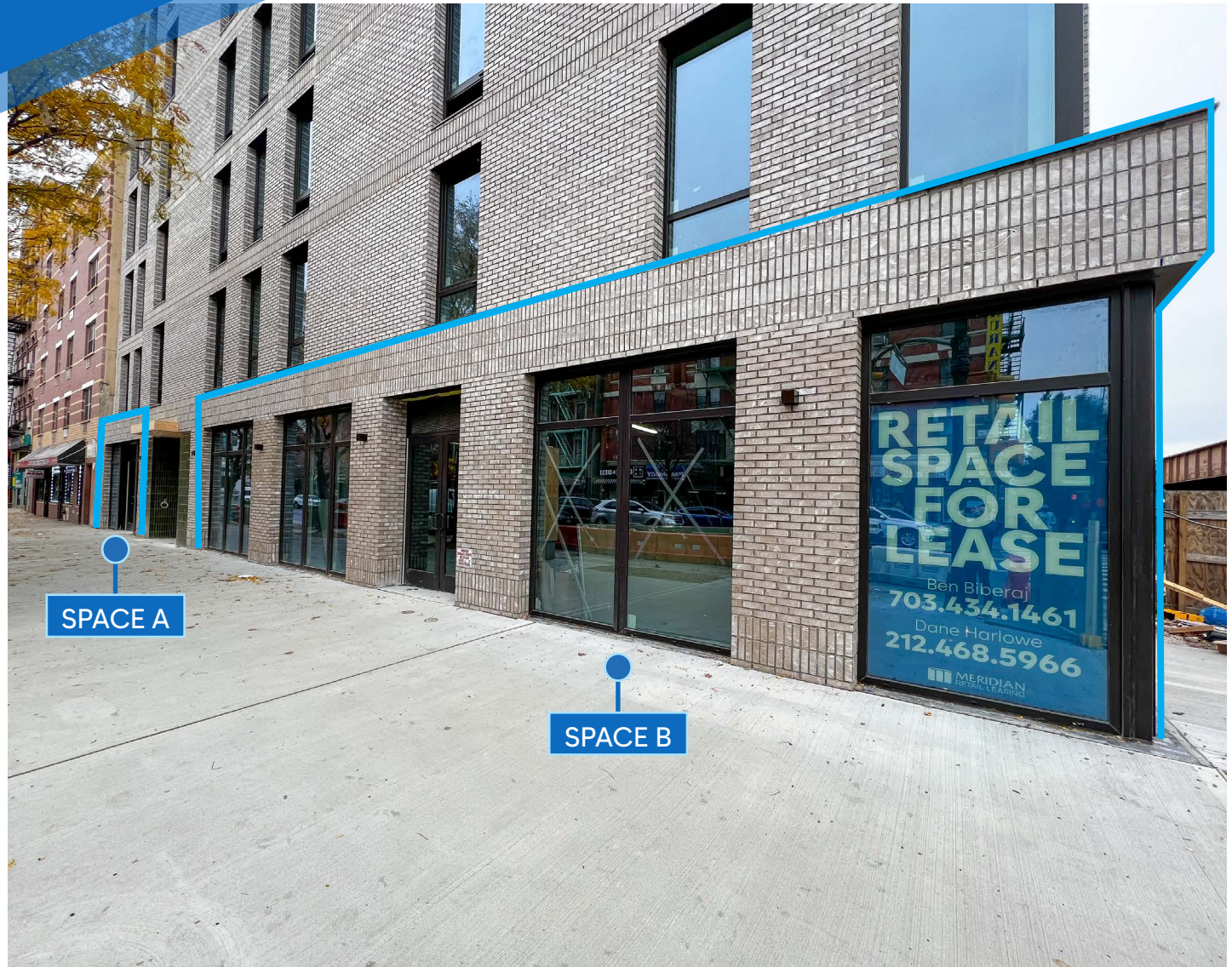
- New development on the corner of East 116<sup>th</sup> Street and Park Avenue
- Spaces feature all glass facade
- Great ceiling height
- Close proximity to transportation

### NEIGHBORS

Armonie Bistro • Boost Mobile • UPS • House of Candles • Spafiesta • Madison Avenue Laundry

### TRANSPORTATION

4 5 6



PROPERTY INFORMATION

**JAMES FAMULARO**  
President

**BEN BIBERAJ**  
Senior Director  
703.434.1461  
bbiberaj@meridiancapital.com

**GABI WEISS**  
Associate  
212.468.5920  
gweiss@meridiancapital.com

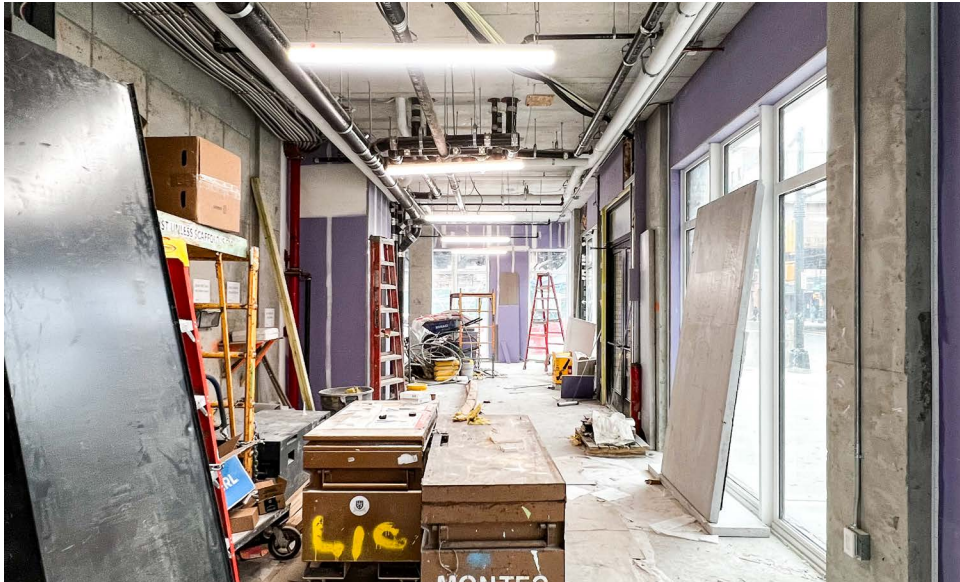
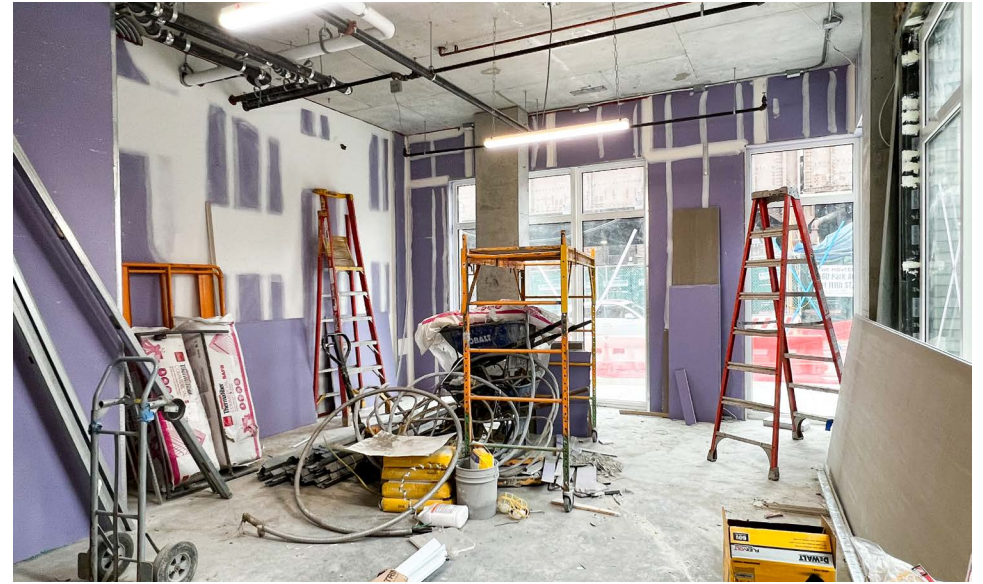
**MERIDIAN**  
RETAIL LEASING

All information supplied is from sources deemed reliable and is furnished subject to errors, omissions, modifications, removal of the listing from sale or lease, and to any listing conditions, including the rates and manner of payment of commissions for particular offerings imposed by Meridian Capital Group. This information may include estimates and projections prepared by Meridian Capital Group with respect to future events, and these future events may or may not actually occur. Such estimates and projections reflect various assumptions concerning anticipated results. While Meridian Capital Group believes these assumptions are reasonable, there can be no assurance that any of these estimates and projections will be correct. Therefore, actual results may vary materially from these estimates and projections. Any square footage dimensions set forth are approximate.

# 1638 PARK AVENUE

EAST HARLEM, NYC | Corner of 116<sup>th</sup> Street and Park Avenue

RETAIL FOR LEASE



INTERIOR

**JAMES FAMULARO**  
President

**BEN BIBERAJ**  
Senior Director  
703.434.1461  
bbiberaj@meridiancapital.com

**GABI WEISS**  
Associate  
212.468.5920  
gweiss@meridiancapital.com



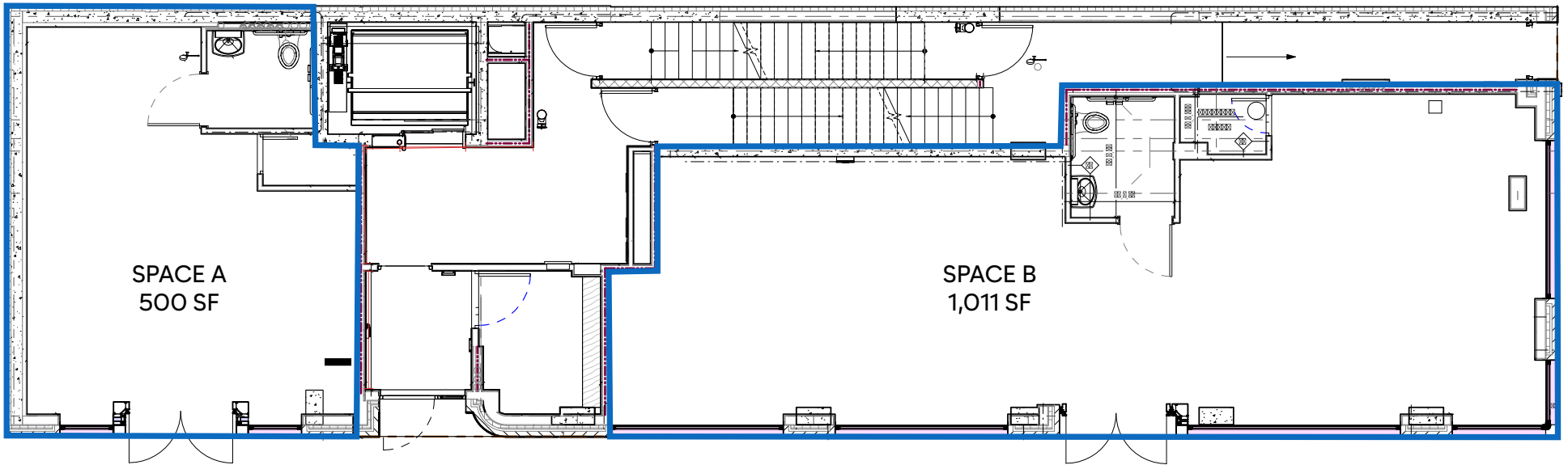
All information supplied is from sources deemed reliable and is furnished subject to errors, omissions, modifications, removal of the listing from sale or lease, and to any listing conditions, including the rates and manner of payment of commissions for particular offerings imposed by Meridian Capital Group. This information may include estimates and projections prepared by Meridian Capital Group with respect to future events, and these future events may or may not actually occur. Such estimates and projections reflect various assumptions concerning anticipated results. While Meridian Capital Group believes these assumptions are reasonable, there can be no assurance that any of these estimates and projections will be correct. Therefore, actual results may vary materially from these estimates and projections. Any square footage dimensions set forth are approximate.

1638 PARK AVENUE

EAST HARLEM, NYC | Corner of 116<sup>th</sup> Street and Park Avenue

RETAIL FOR LEASE

FLOOR PLAN



**JAMES FAMULARO**  
President

**BEN BIBERAJ**  
Senior Director  
703.434.1461  
bbiberaj@meridiancapital.com

**GABI WEISS**  
Associate  
212.468.5920  
gweiss@meridiancapital.com



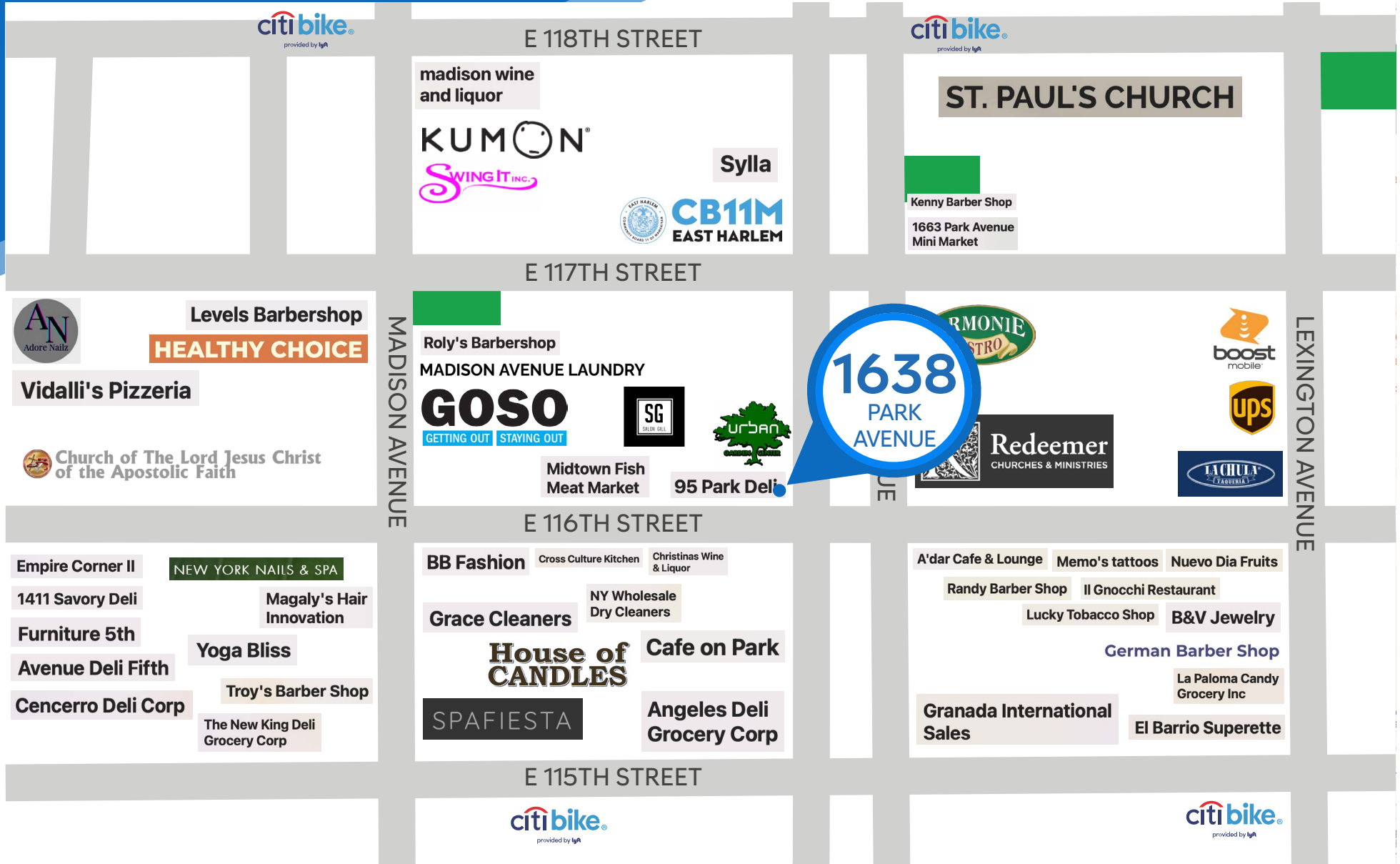
All information supplied is from sources deemed reliable and is furnished subject to errors, omissions, modifications, removal of the listing from sale or lease, and to any listing conditions, including the rates and manner of payment of commissions for particular offerings imposed by Meridian Capital Group. This information may include estimates and projections prepared by Meridian Capital Group with respect to future events, and these future events may or may not actually occur. Such estimates and projections reflect various assumptions concerning anticipated results. While Meridian Capital Group believes these assumptions are reasonable, there can be no assurance that any of these estimates and projections will be correct. Therefore, actual results may vary materially from these estimates and projections. Any square footage dimensions set forth are approximate.

1638 PARK AVENUE

EAST HARLEM, NYC | Corner of 116<sup>th</sup> Street and Park Avenue

RETAIL FOR LEASE

NEIGHBORS



JAMES FAMULARO  
President

BEN BIBERAJ  
Senior Director  
703.434.1461  
bbiberaj@meridiancapital.com

GABI WEISS  
Associate  
212.468.5920  
gweiss@meridiancapital.com



All information supplied is from sources deemed reliable and is furnished subject to errors, omissions, modifications, removal of the listing from sale or lease, and to any listing conditions, including the rates and manner of payment of commissions for particular offerings imposed by Meridian Capital Group. This information may include estimates and projections prepared by Meridian Capital Group with respect to future events, and these future events may or may not actually occur. Such estimates and projections reflect various assumptions concerning anticipated results. While Meridian Capital Group believes these assumptions are reasonable, there can be no assurance that any of these estimates and projections will be correct. Therefore, actual results may vary materially from these estimates and projections. Any square footage dimensions set forth are approximate.