

42

MULBERRY STREET CHINATOWN, NYC

Between Bayard & Mosco Streets

RESTAURANT FOR LEASE



APPROXIMATE SIZE

Ground Floor: 1,200 SF
Basement: 830 SF

ASKING RENT

\$14,000/Month

POSSESSION

Arranged

TERM

10+ Years

FRONTAGE

16 FT

COMMENTS

- Second generation restaurant space
- Venting and gas in place
- Currently "Tasty Dumpling"
- Situated in a model corridor of Chinatown directly in front of Columbus Park

NEIGHBORS

Columbus Park • Doyers Street • Golden Unicorn
• Joe's Shanghai • Xi'an Famous Foods • Tiger
Sugar Bubble Tea • Yu & Me Books • Mei Jai Wah

TRANSPORTATION

4 5 6 J Z

M22 M9 M103

PROPERTY INFORMATION

JAMES FAMULARO

President

GARRETT KELLY

Director

212.468.5939

gkelly@meridiancapital.com

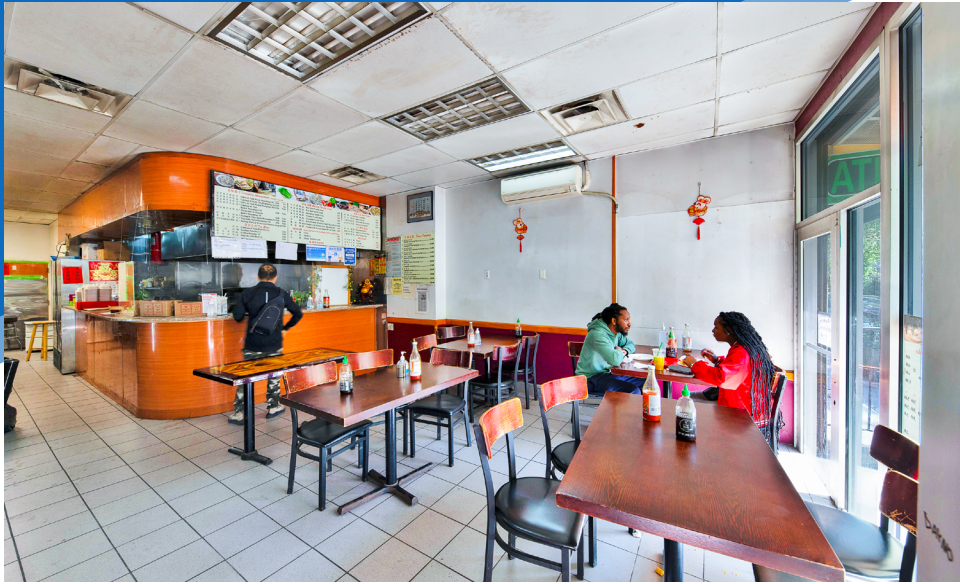
 **MERIDIAN**
RETAIL LEASING

All information supplied is from sources deemed reliable and is furnished subject to errors, omissions, modifications, removal of the listing from sale or lease, and to any listing conditions, including the rates and manner of payment of commissions for particular offerings imposed by Meridian Capital Group. This information may include estimates and projections prepared by Meridian Capital Group with respect to future events, and these future events may or may not actually occur. Such estimates and projections reflect various assumptions concerning anticipated results. While Meridian Capital Group believes these assumptions are reasonable, there can be no assurance that any of these estimates and projections will be correct. Therefore, actual results may vary materially from these estimates and projections. Any square footage dimensions set forth are approximate.

42 MULBERRY STREET

CHINATOWN, NYC | Between Bayard and Mosco Streets

RESTAURANT FOR LEASE



INTERIOR

JAMES FAMULARO
President

GARRETT KELLY
Director
212.468.5939
gkelly@meridiancapital.com

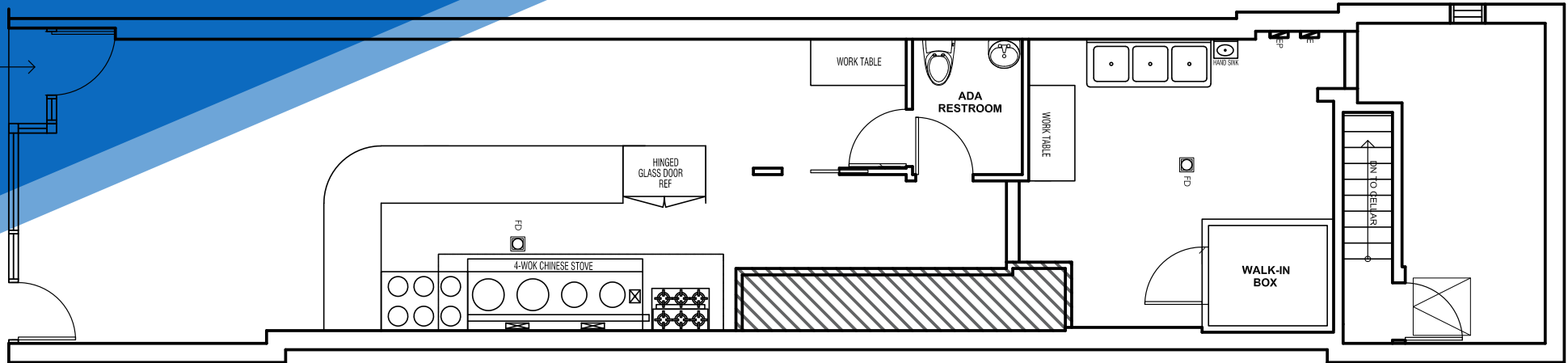


All information supplied is from sources deemed reliable and is furnished subject to errors, omissions, modifications, removal of the listing from sale or lease, and to any listing conditions, including the rates and manner of payment of commissions for particular offerings imposed by Meridian Capital Group. This information may include estimates and projections prepared by Meridian Capital Group with respect to future events, and these future events may or may not actually occur. Such estimates and projections reflect various assumptions concerning anticipated results. While Meridian Capital Group believes these assumptions are reasonable, there can be no assurance that any of these estimates and projections will be correct. Therefore, actual results may vary materially from these estimates and projections. Any square footage dimensions set forth are approximate.

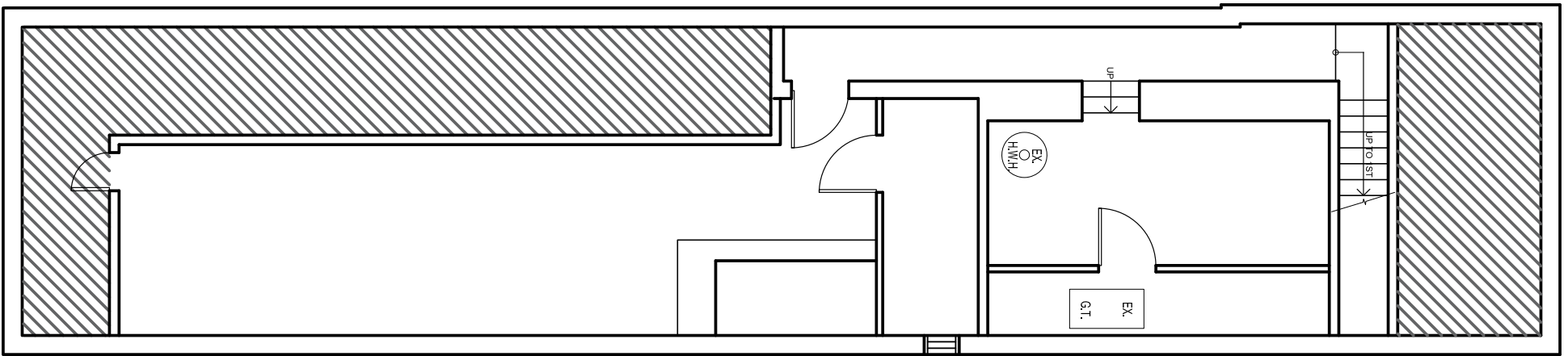
42 MULBERRY STREET

CHINATOWN, NYC | Between Bayard and Mosco Streets

RESTAURANT FOR LEASE



GROUND FLOOR



BASEMENT

FLOOR PLAN

JAMES FAMULARO
President

GARRETT KELLY
Director
212.468.5939
gkelly@meridiancapital.com



All information supplied is from sources deemed reliable and is furnished subject to errors, omissions, modifications, removal of the listing from sale or lease, and to any listing conditions, including the rates and manner of payment of commissions for particular offerings imposed by Meridian Capital Group. This information may include estimates and projections prepared by Meridian Capital Group with respect to future events, and these future events may or may not actually occur. Such estimates and projections reflect various assumptions concerning anticipated results. While Meridian Capital Group believes these assumptions are reasonable, there can be no assurance that any of these estimates and projections will be correct. Therefore, actual results may vary materially from these estimates and projections. Any square footage dimensions set forth are approximate.

42 MULBERRY STREET

CHINATOWN, NYC | Between Bayard and Mosco Streets

RESTAURANT FOR LEASE



NEIGHBORS

JAMES FAMULARO
President

GARRETT KELLY
Director
212.468.5939
gkelly@meridiancapital.com



All information supplied is from sources deemed reliable and is furnished subject to errors, omissions, modifications, removal of the listing from sale or lease, and to any listing conditions, including the rates and manner of payment of commissions for particular offerings imposed by Meridian Capital Group. This information may include estimates and projections prepared by Meridian Capital Group with respect to future events, and these future events may or may not actually occur. Such estimates and projections reflect various assumptions concerning anticipated results. While Meridian Capital Group believes these assumptions are reasonable, there can be no assurance that any of these estimates and projections will be correct. Therefore, actual results may vary materially from these estimates and projections. Any square footage dimensions set forth are approximate.