

1991

BROADWAY
LINCOLN SQUARE, NYC

Between West 67th & 68th Streets

APPROXIMATE SIZE

Ground Floor: 2,125 SF

Mezzanine: 1,702 SF

Second Floor: 1,400 SF

Lower Level: 1,875 SF

Total: 7,102 SF

ASKING RENT

\$800,000 Per Annum

POSSESSION

Immediate

TERM

10-15 Years

FRONTAGE

Over 55 FT Along
Broadway

COMMENTS

- Formerly "Sugar Factory"
- High traffic area from Central Park and Columbus Circle
- Steps from Lincoln Center with 11 resident performing arts organizations whom present over 3,000 programs, events, and initiatives annually
- Directly next to the Apple Store

NEIGHBORS

ABC Studios • The Alvin Ailey American Dance Theater • Symphony Space • Merkin Hall • Children's Television Workshop • Kiehl's • Rag & Bone • Pottery Barn • Theory • Magnolia Bakery

TRANSPORTATION



JAMES FAMULARO

President

646.658.7373

jfamularo@meridiancapital.com



PROPERTY INFORMATION

1991 BROADWAY

LINCOLN SQUARE, NYC | Between West 67th and 68th Streets

RESTAURANT FOR LEASE



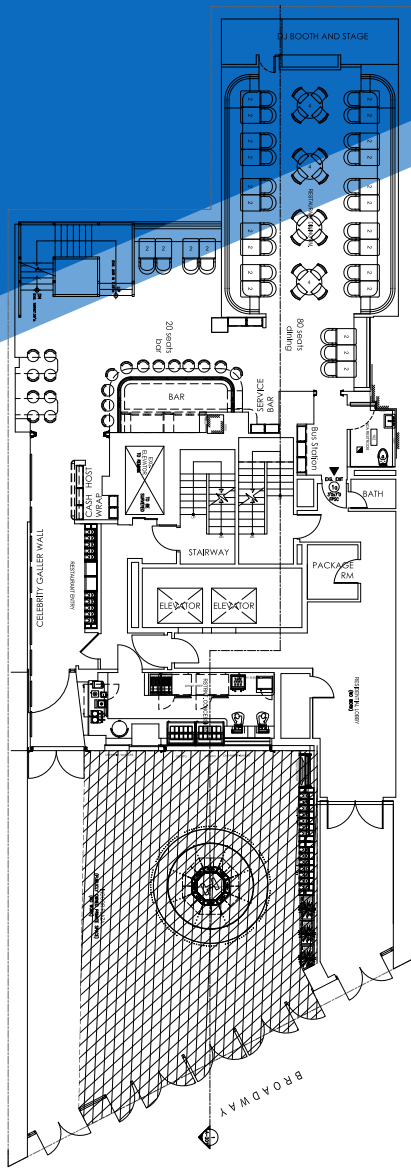
INTERIOR

JAMES FAMULARO

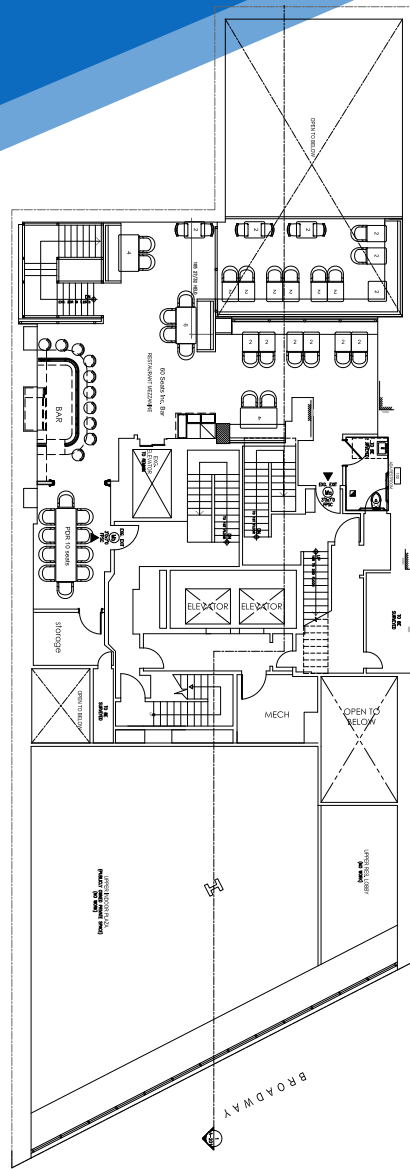
President
646.658.7373
jfamularo@meridiancapital.com



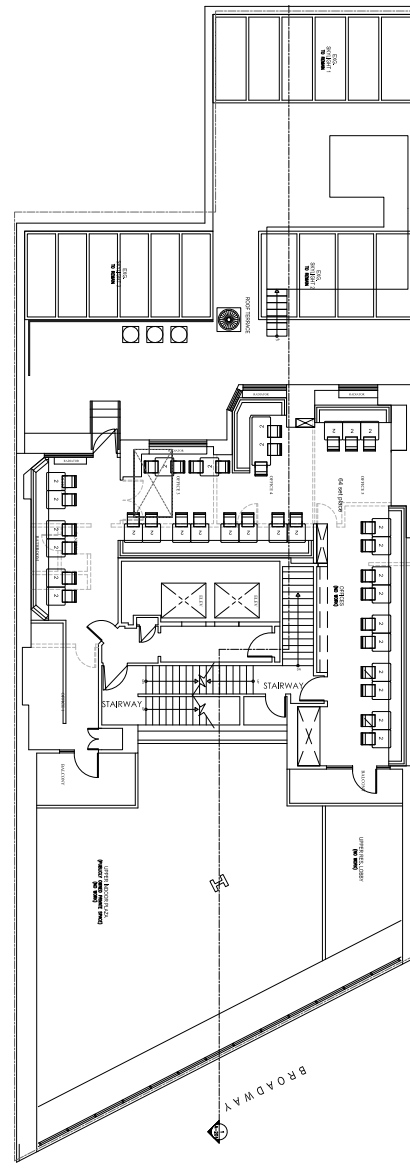
All information supplied is from sources deemed reliable and is furnished subject to errors, omissions, modifications, removal of the listing from sale or lease, and to any listing conditions, including the rates and manner of payment of commissions for particular offerings imposed by Meridian Capital Group. This information may include estimates and projections prepared by Meridian Capital Group with respect to future events, and these future events may or may not actually occur. Such estimates and projections reflect various assumptions concerning anticipated results. While Meridian Capital Group believes these assumptions are reasonable, there can be no assurance that any of these estimates and projections will be correct. Therefore, actual results may vary materially from these estimates and projections. Any square footage dimensions set forth are approximate.



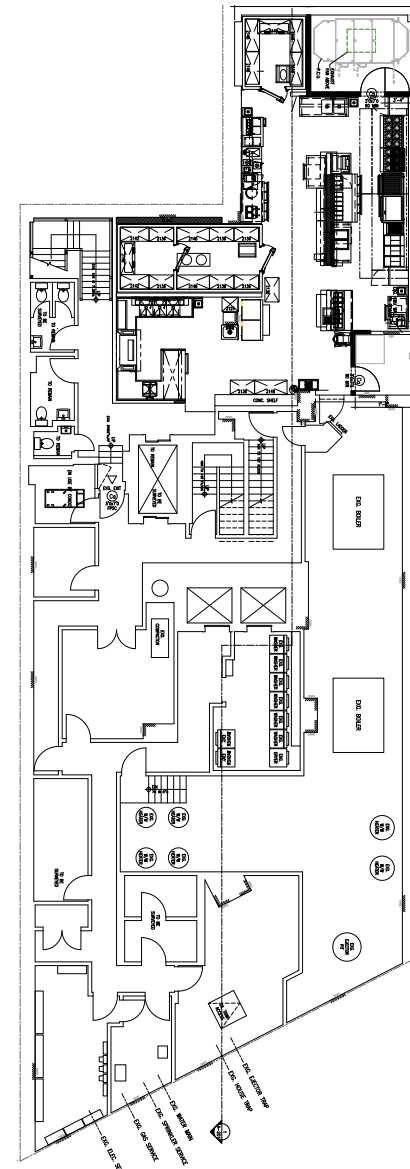
GROUND FLOOR



MEZZANINE



SECOND FLOOR



LOWER LEVEL

JAMES FAMULARO
 President
 646.658.7373
 jfamularo@meridiancapital.com



1991 BROADWAY

LINCOLN SQUARE, NYC | Between West 67th and 68th Streets

RESTAURANT FOR LEASE



NEIGHBORS

1991 BROADWAY

W 71ST STREET

W 70TH STREET

W 69TH STREET

W 68TH STREET

W 67TH STREET

W 66TH STREET

W 65TH STREET

COLUMBUS AVENUE

CENTRAL PARK WEST

Central Park

Brands shown on map: HELMUT LANG, LENS CRAFTERS, WELLS FARGO, POMODORO ROSSO, ATHLETA, INTERMIX, CHASE, MAGNOLIA BAKERY, CLUB MONACO, kate spade, Aēsop, theory, POPYRUS, LOFT, BCBGMAXAZRIA, montmartre, nanette L'OCCITANE, sandro, JOE, TD Bank, UGG, GAP, Reebok, UNITED STATES POSTAL SERVICE, UPS The UPS Store, Apple, unleashed by PETCO, GNC, fresh, JOANNE TRATTORIA, POTTERY BARN, ZARA, Raymour & Flanigan, MACYS, Kiehl's, STARBUCKS COFFEE, LIVE KELLY AND RYAN, abc studios, STARBUCKS, CENTRAL PARK WEST MED SPA, PRELUDE CAFÉ & BAR, Juilliard, DANCE DRAMA MUSIC, AMERICAN TABLE BRASSERIE AND BAR, AMERICAN FOLK ART MUSEUM, SHUN LEE, ESPN, yogaworks, my GYM CHILDREN'S FITNESS CENTER.

JAMES FAMULARO

President
646.658.7373
jfamularo@meridiancapital.com



All information supplied is from sources deemed reliable and is furnished subject to errors, omissions, modifications, removal of the listing from sale or lease, and to any listing conditions, including the rates and manner of payment of commissions for particular offerings imposed by Meridian Capital Group. This information may include estimates and projections prepared by Meridian Capital Group with respect to future events, and these future events may or may not actually occur. Such estimates and projections reflect various assumptions concerning anticipated results. While Meridian Capital Group believes these assumptions are reasonable, there can be no assurance that any of these estimates and projections will be correct. Therefore, actual results may vary materially from these estimates and projections. Any square footage dimensions set forth are approximate.