

# 534

## WEST 145<sup>TH</sup> STREET HAMILTON HEIGHTS, NYC

Between Broadway & Amsterdam  
Avenue

RETAIL FOR LEASE

### APPROXIMATE SIZE

1,875 SF

### ASKING RENT

\$13,000/Month

### POSSESSION

Immediate

### TERM

10-15 Years

### FRONTAGE

35 FT

### COMMENTS

- Brand-new storefront
- Fully white-boxed interior
- One bathroom in place
- Located on a main throughfare, just a block from the subway

### NEIGHBORS

Foot Locker • Snipes • Indoor Cannabis •  
The Chick Inn • Cohen's Fashion Optical •  
CVS • Brand's Wine & Liquor • The Oma

### TRANSPORTATION

1 B D



JAMES FAMULARO  
President

DANE HARLOWE  
Director  
212.468.5966  
dharlowe@meridiancapital.com

 **MERIDIAN**  
RETAIL LEASING

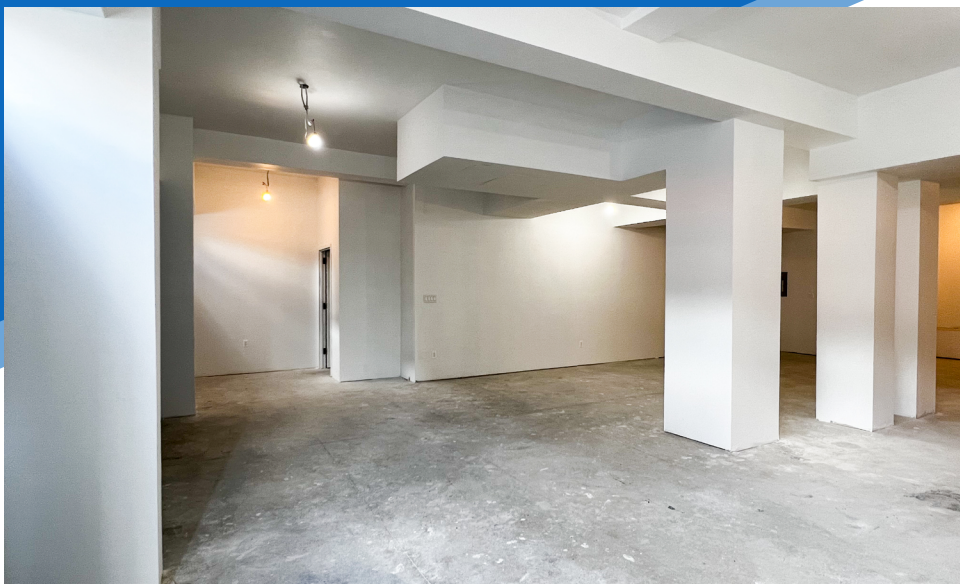
All information supplied is from sources deemed reliable and is furnished subject to errors, omissions, modifications, removal of the listing from sale or lease, and to any listing conditions, including the rates and manner of payment of commissions for particular offerings imposed by Meridian Capital Group. This information may include estimates and projections prepared by Meridian Capital Group with respect to future events, and these future events may or may not actually occur. Such estimates and projections reflect various assumptions concerning anticipated results. While Meridian Capital Group believes these assumptions are reasonable, there can be no assurance that any of these estimates and projections will be correct. Therefore, actual results may vary materially from these estimates and projections. Any square footage dimensions set forth are approximate.



534 WEST 145<sup>TH</sup> STREET

HAMILTON HEIGHTS, NYC | Between Broadway and Amsterdam Avenue

RETAIL FOR LEASE



INTERIOR

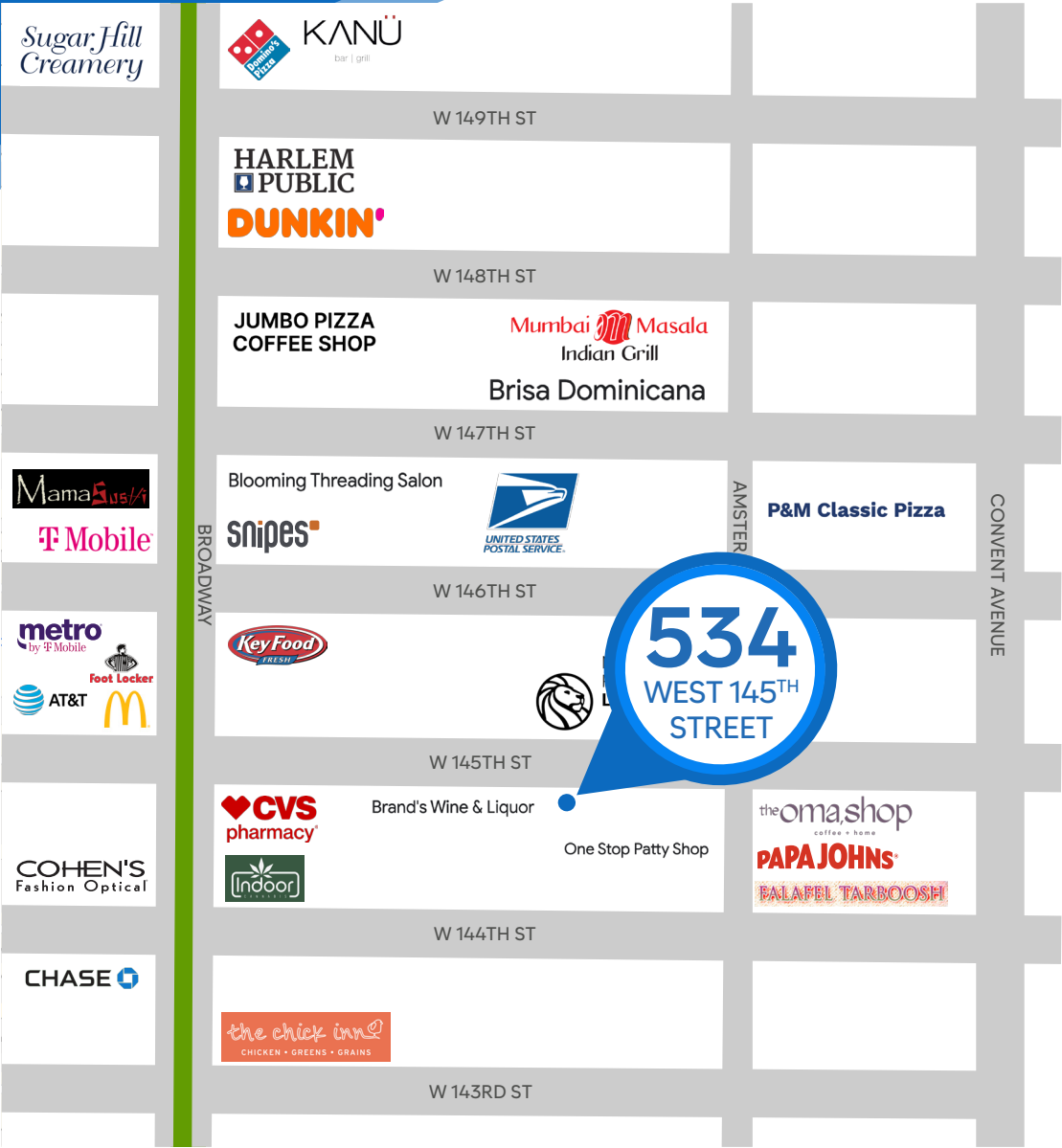
JAMES FAMULARO  
President

DANE HARLOWE  
Director  
212.468.5966  
dharlowe@meridiancapital.com



All information supplied is from sources deemed reliable and is furnished subject to errors, omissions, modifications, removal of the listing from sale or lease, and to any listing conditions, including the rates and manner of payment of commissions for particular offerings imposed by Meridian Capital Group. This information may include estimates and projections prepared by Meridian Capital Group with respect to future events, and these future events may or may not actually occur. Such estimates and projections reflect various assumptions concerning anticipated results. While Meridian Capital Group believes these assumptions are reasonable, there can be no assurance that any of these estimates and projections will be correct. Therefore, actual results may vary materially from these estimates and projections. Any square footage dimensions set forth are approximate.

NEIGHBORS



JAMES FAMULARO  
President

DANE HARLOWE  
Director  
212.468.5966  
dharlowe@meridiancapital.com



All information supplied is from sources deemed reliable and is furnished subject to errors, omissions, modifications, removal of the listing from sale or lease, and to any listing conditions, including the rates and manner of payment of commissions for particular offerings imposed by Meridian Capital Group. This information may include estimates and projections prepared by Meridian Capital Group with respect to future events, and these future events may or may not actually occur. Such estimates and projections reflect various assumptions concerning anticipated results. While Meridian Capital Group believes these assumptions are reasonable, there can be no assurance that any of these estimates and projections will be correct. Therefore, actual results may vary materially from these estimates and projections. Any square footage dimensions set forth are approximate.