

301

EAST HOUSTON STREET LOWER EAST SIDE, NYC

Between Clinton & Attorney Streets

APPROXIMATE SIZE
700 SF

ASKING RENT
Upon Request

TERM
Negotiable

COMMENTS

- High visibility
- High foot traffic
- Popular Lower East Side street
- Wide frontage

NEIGHBORS

Ivan Ramen • Davelle • the Mayfly •
Van Leeuwen • Sweet Chick • Dirty
French • Beauty & Essex • Dunkin'

TRANSPORTATION



POSSESSION
Immediate

FRONTAGE
10 FT



PROPERTY INFORMATION

JAMES FAMULARO
President

BEN BIBERAJ
Senior Director
703.434.1461
bbiberaj@meridiancapital.com

ELLIOT WYGODA
Associate
212.468.5968
ewygoda@meridiancapital.com



301 EAST HOUSTON STREET

LOWER EAST SIDE, NYC | Between Clinton and Attorney Streets

RETAIL FOR LEASE



INTERIOR

JAMES FAMULARO
President

BEN BIBERAJ
Senior Director
703.434.1461
bbiberaj@meridiancapital.com

ELLIOT WYGODA
Associate
212.468.5968
ewygoda@meridiancapital.com



All information supplied is from sources deemed reliable and is furnished subject to errors, omissions, modifications, removal of the listing from sale or lease, and to any listing conditions, including the rates and manner of payment of commissions for particular offerings imposed by Meridian Capital Group. This information may include estimates and projections prepared by Meridian Capital Group with respect to future events, and these future events may or may not actually occur. Such estimates and projections reflect various assumptions concerning anticipated results. While Meridian Capital Group believes these assumptions are reasonable, there can be no assurance that any of these estimates and projections will be correct. Therefore, actual results may vary materially from these estimates and projections. Any square footage dimensions set forth are approximate.

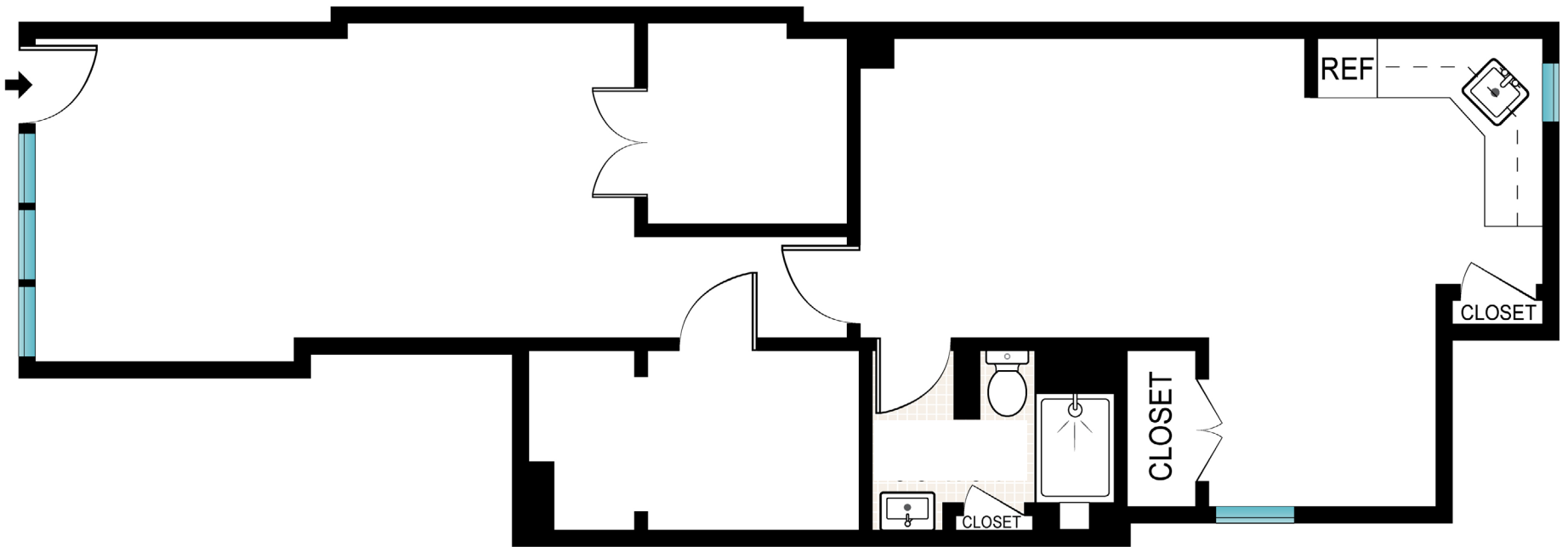
301 EAST HOUSTON STREET

LOWER EAST SIDE, NYC | Between Clinton and Attorney Streets

RETAIL FOR LEASE

FLOOR PLAN

EAST HOUSTON STREET



JAMES FAMULARO
President

BEN BIBERAJ
Senior Director
703.434.1461
bbiberaj@meridiancapital.com

ELLIOT WYGODA
Associate
212.468.5968
ewygoda@meridiancapital.com



All information supplied is from sources deemed reliable and is furnished subject to errors, omissions, modifications, removal of the listing from sale or lease, and to any listing conditions, including the rates and manner of payment of commissions for particular offerings imposed by Meridian Capital Group. This information may include estimates and projections prepared by Meridian Capital Group with respect to future events, and these future events may or may not actually occur. Such estimates and projections reflect various assumptions concerning anticipated results. While Meridian Capital Group believes these assumptions are reasonable, there can be no assurance that any of these estimates and projections will be correct. Therefore, actual results may vary materially from these estimates and projections. Any square footage dimensions set forth are approximate.

301 EAST HOUSTON STREET

LOWER EAST SIDE, NYC | Between Clinton and Attorney Streets

RETAIL FOR LEASE



NEIGHBORS

JAMES FAMULARO
President

BEN BIBERAJ
Senior Director
703.434.1461
bbiberaj@meridiancapital.com

ELLIOT WYGODA
Associate
212.468.5968
ewygoda@meridiancapital.com



All information supplied is from sources deemed reliable and is furnished subject to errors, omissions, modifications, removal of the listing from sale or lease, and to any listing conditions, including the rates and manner of payment of commissions for particular offerings imposed by Meridian Capital Group. This information may include estimates and projections prepared by Meridian Capital Group with respect to future events, and these future events may or may not actually occur. Such estimates and projections reflect various assumptions concerning anticipated results. While Meridian Capital Group believes these assumptions are reasonable, there can be no assurance that any of these estimates and projections will be correct. Therefore, actual results may vary materially from these estimates and projections. Any square footage dimensions set forth are approximate.