

# 253

## WEST 73<sup>RD</sup> STREET UPPER WEST SIDE, NYC

Between Broadway & West End  
Avenue

### APPROXIMATE SIZE

Ground Floor: 3,500 SF  
Basement: 4,500 SF  
Cellar: 13,900 SF  
Total: 21,900 SF

### ASKING RENT

Upon Request

### POSSESSION

Immediate

### TERM

Negotiable

### FRONTAGE

15 FT

### COMMENTS

- Unique, one-of-a-kind lower-level space
- Very tall ceilings
- Close to the subway at 72<sup>nd</sup> Street
- Steps from Central Park

### NEIGHBORS

Beacon Theater • Sephora • Chipotle • Levain Bakery •  
Sweetgreen • Blue Bottle Coffee • Viand Café • TD Bank

### TRANSPORTATION



PROPERTY INFORMATION

**JAMES FAMULARO**  
President

**BEN BIBERAJ**  
Senior Director  
703.434.1461  
bbiberaj@meridiancapital.com

**ELLIOT WYGODA**  
Associate  
212.468.5968  
ewygoda@meridiancapital.com



# 253 WEST 73<sup>RD</sup> STREET

UPPER WEST SIDE, NYC | Between Broadway and West End Avenue

RETAIL FOR LEASE



INTERIOR

**JAMES FAMULARO**  
President

**BEN BIBERAJ**  
Senior Director  
703.434.1461  
bbiberaj@meridiancapital.com

**ELLIOT WYGODA**  
Associate  
212.468.5968  
ewygoda@meridiancapital.com



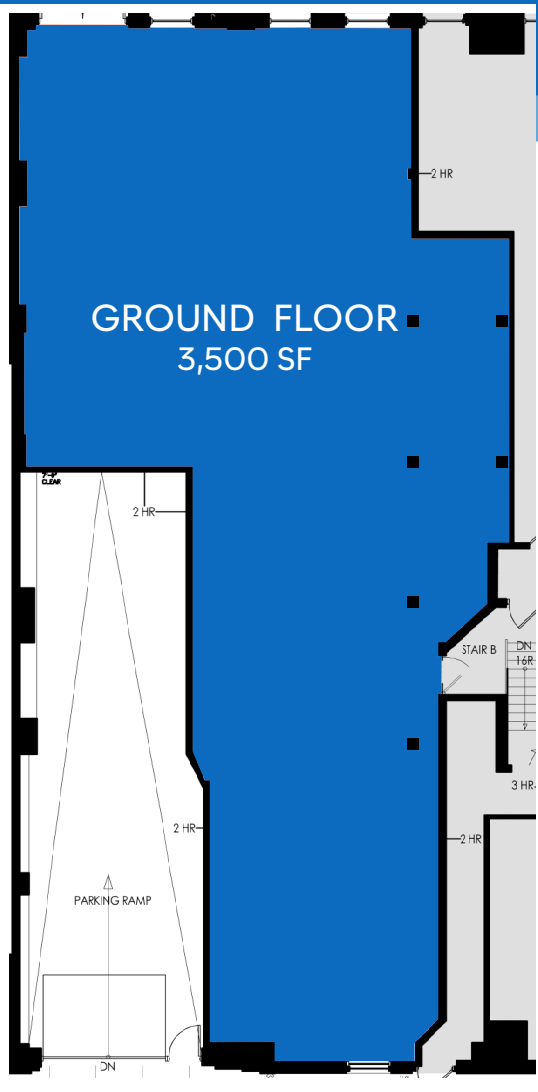
All information supplied is from sources deemed reliable and is furnished subject to errors, omissions, modifications, removal of the listing from sale or lease, and to any listing conditions, including the rates and manner of payment of commissions for particular offerings imposed by Meridian Capital Group. This information may include estimates and projections prepared by Meridian Capital Group with respect to future events, and these future events may or may not actually occur. Such estimates and projections reflect various assumptions concerning anticipated results. While Meridian Capital Group believes these assumptions are reasonable, there can be no assurance that any of these estimates and projections will be correct. Therefore, actual results may vary materially from these estimates and projections. Any square footage dimensions set forth are approximate.

253 WEST 73<sup>RD</sup> STREET

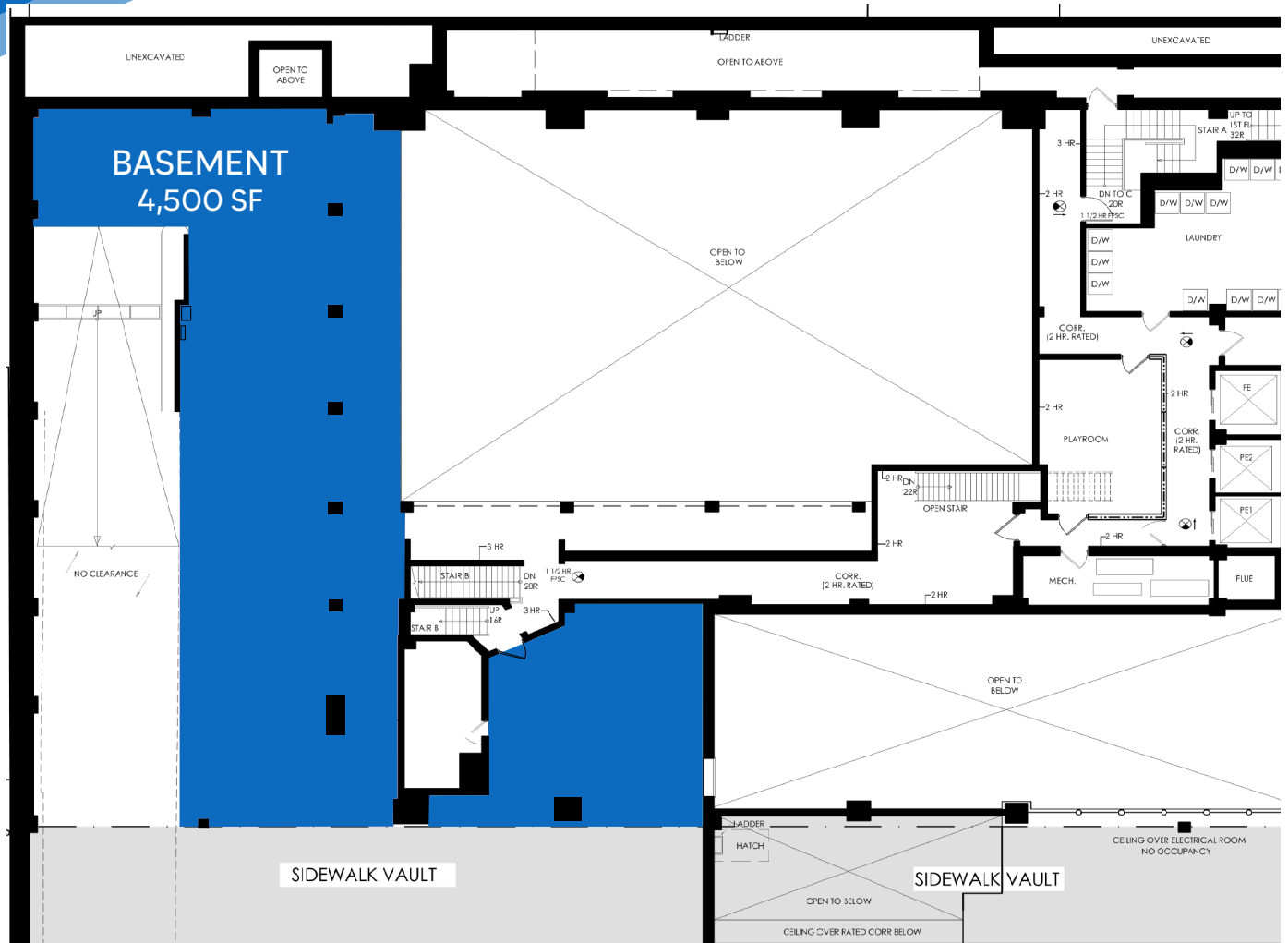
UPPER WEST SIDE, NYC | Between Broadway and West End Avenue

RETAIL FOR LEASE

FLOOR PLAN | GROUND FLOOR & BASEMENT



ENTRANCE ON 73<sup>RD</sup> STREET



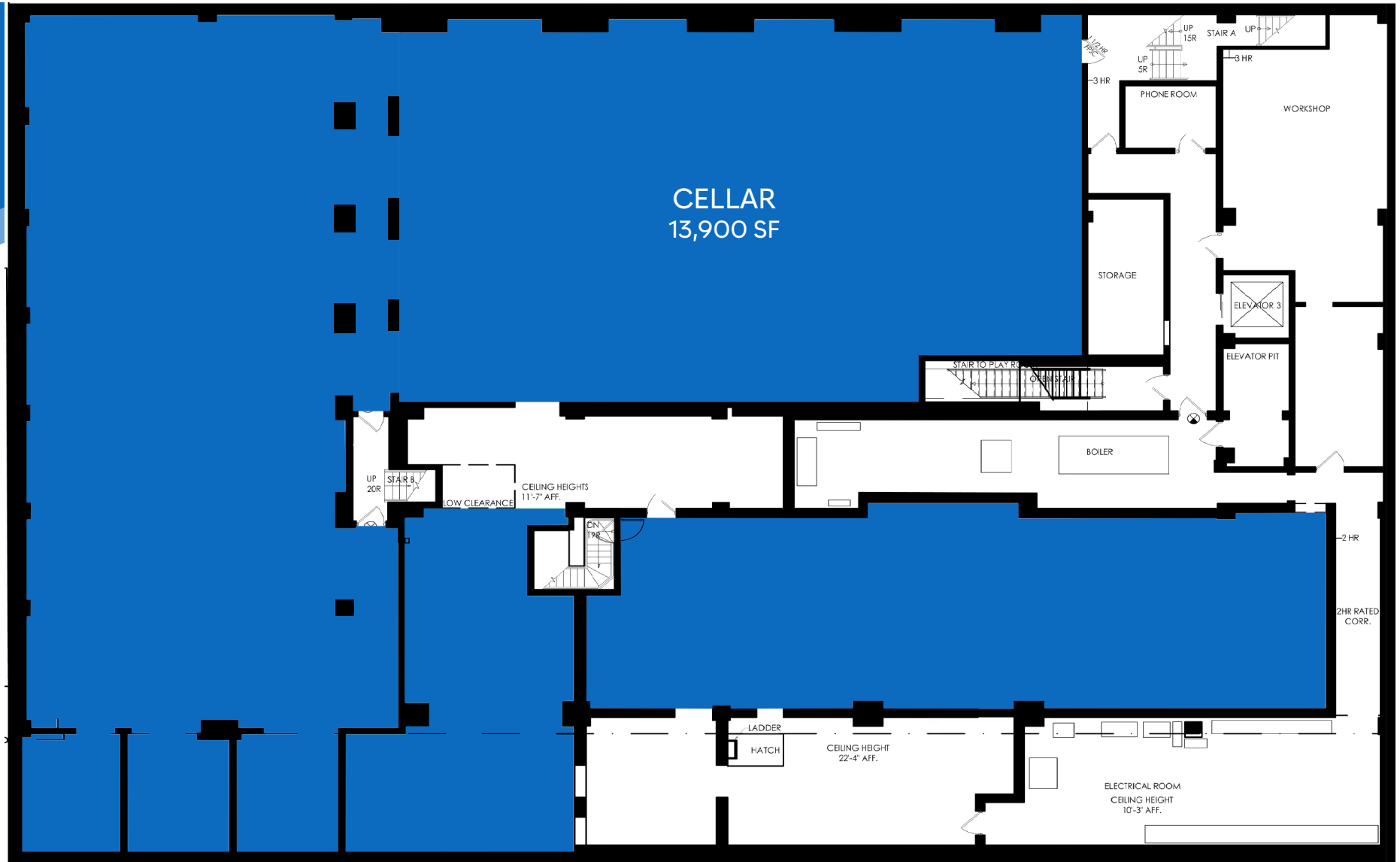
JAMES FAMULARO  
President

BEN BIBERAJ  
Senior Director  
703.434.1461  
bbiberaj@meridiancapital.com

ELLIOT WYGODA  
Associate  
212.468.5968  
ewygoda@meridiancapital.com



All information supplied is from sources deemed reliable and is furnished subject to errors, omissions, modifications, removal of the listing from sale or lease, and to any listing conditions, including the rates and manner of payment of commissions for particular offerings imposed by Meridian Capital Group. This information may include estimates and projections prepared by Meridian Capital Group with respect to future events, and these future events may or may not actually occur. Such estimates and projections reflect various assumptions concerning anticipated results. While Meridian Capital Group believes these assumptions are reasonable, there can be no assurance that any of these estimates and projections will be correct. Therefore, actual results may vary materially from these estimates and projections. Any square footage dimensions set forth are approximate.



JAMES FAMULARO  
President

BEN BIBERAJ  
Senior Director  
703.434.1461  
bbiberaj@meridiancapital.com

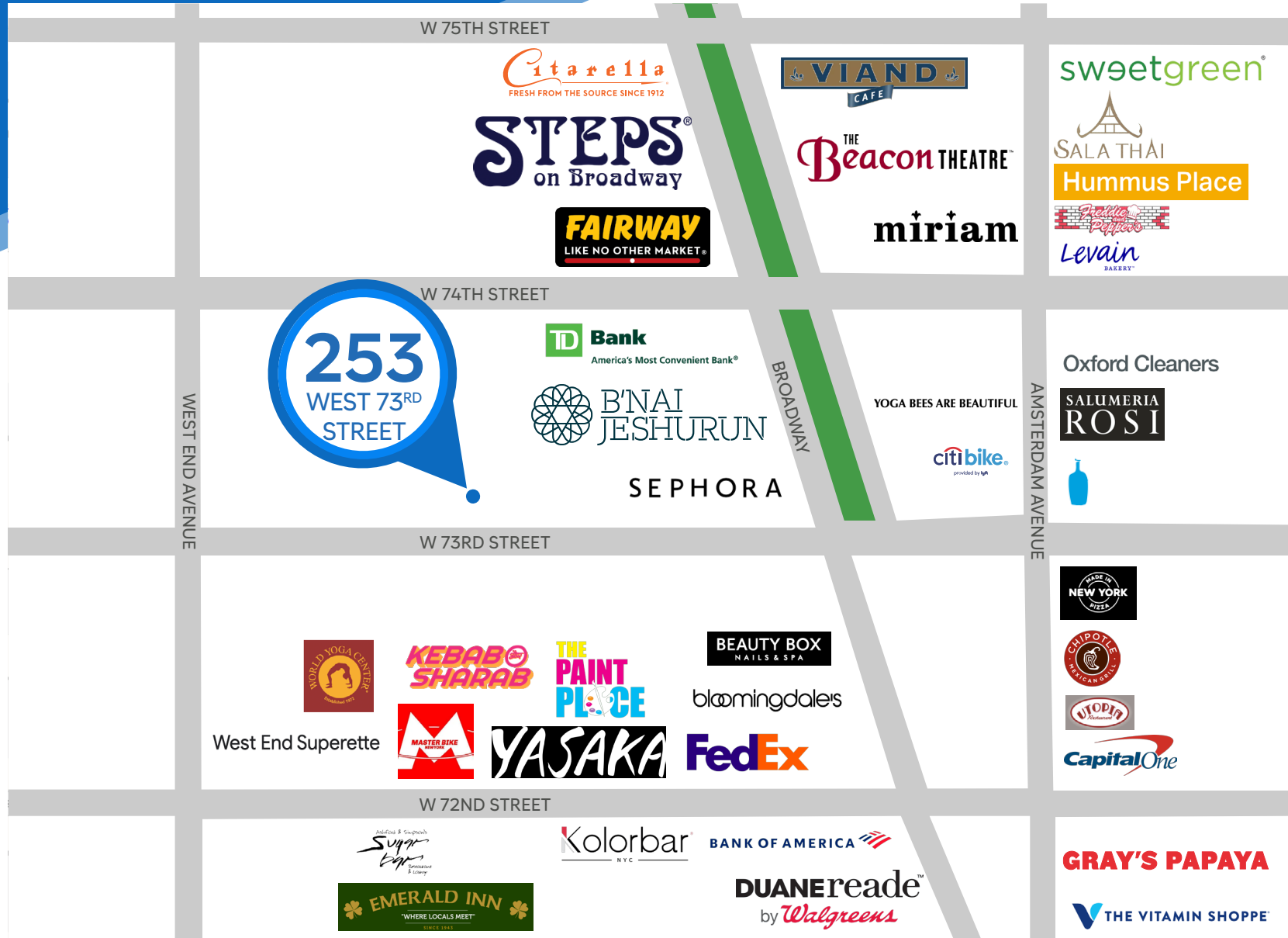
ELLIOT WYGODA  
Associate  
212.468.5968  
ewygoda@meridiancapital.com



253 WEST 73<sup>RD</sup> STREET

UPPER WEST SIDE, NYC | Between Broadway and West End Avenue

RETAIL FOR LEASE



NEIGHBORS

JAMES FAMULARO  
President

BEN BIBERAJ  
Senior Director  
703.434.1461  
bbiberaj@meridiancapital.com

ELLIOT WYGODA  
Associate  
212.468.5968  
ewygoda@meridiancapital.com



All information supplied is from sources deemed reliable and is furnished subject to errors, omissions, modifications, removal of the listing from sale or lease, and to any listing conditions, including the rates and manner of payment of commissions for particular offerings imposed by Meridian Capital Group. This information may include estimates and projections prepared by Meridian Capital Group with respect to future events, and these future events may or may not actually occur. Such estimates and projections reflect various assumptions concerning anticipated results. While Meridian Capital Group believes these assumptions are reasonable, there can be no assurance that any of these estimates and projections will be correct. Therefore, actual results may vary materially from these estimates and projections. Any square footage dimensions set forth are approximate.