

420-424

WEST 51ST STREET
HELL'S KITCHEN, NYC

Between Ninth & Tenth Avenues

RETAIL/OFFICE FOR LEASE



PROPERTY INFORMATION

APPROXIMATE SIZE

Ground Floor: 3,500 SF
Outdoor Backyard: 1,275 SF

ASKING RENT

\$12,995/Month

POSSESSION

Immediate

TERM

Negotiable

FRONTAGE

50 FT

COMMENTS

- 50' Frontage with a double-door entrance
- 1,275 SF Backyard Space
- Bathrooms on both levels

NEIGHBORS

Stella Tower – Luxury Residences • Midwest Court
Apartments By Rockrose • The Link Condominium
• Totto Ramen • HB HK • Duane Reade • Manhattan
Bridges High School • Starbucks • Atlas Social Club

TRANSPORTATION



JAMES FAMULARO

President

BEN BIBERAJ

Senior Director
703.434.1461

bbiberaj@meridiancapital.com

CAM PARSON

Associate
212.468.5954

cparson@meridiancapital.com



All information supplied is from sources deemed reliable and is furnished subject to errors, omissions, modifications, removal of the listing from sale or lease, and to any listing conditions, including the rates and manner of payment of commissions for particular offerings imposed by Meridian Capital Group. This information may include estimates and projections prepared by Meridian Capital Group with respect to future events, and these future events may or may not actually occur. Such estimates and projections reflect various assumptions concerning anticipated results. While Meridian Capital Group believes these assumptions are reasonable, there can be no assurance that any of these estimates and projections will be correct. Therefore, actual results may vary materially from these estimates and projections. Any square footage dimensions set forth are approximate.

420-424 WEST 51ST STREET

HELL'S KITCHEN, NYC | Between Ninth and Tenth Avenues

RETAIL/OFFICE FOR LEASE



INTERIOR

JAMES FAMULARO
President

BEN BIBERAJ
Senior Director
703.434.1461
bbiberaj@meridiancapital.com

CAM PARSON
Associate
212.468.5954
cparson@meridiancapital.com



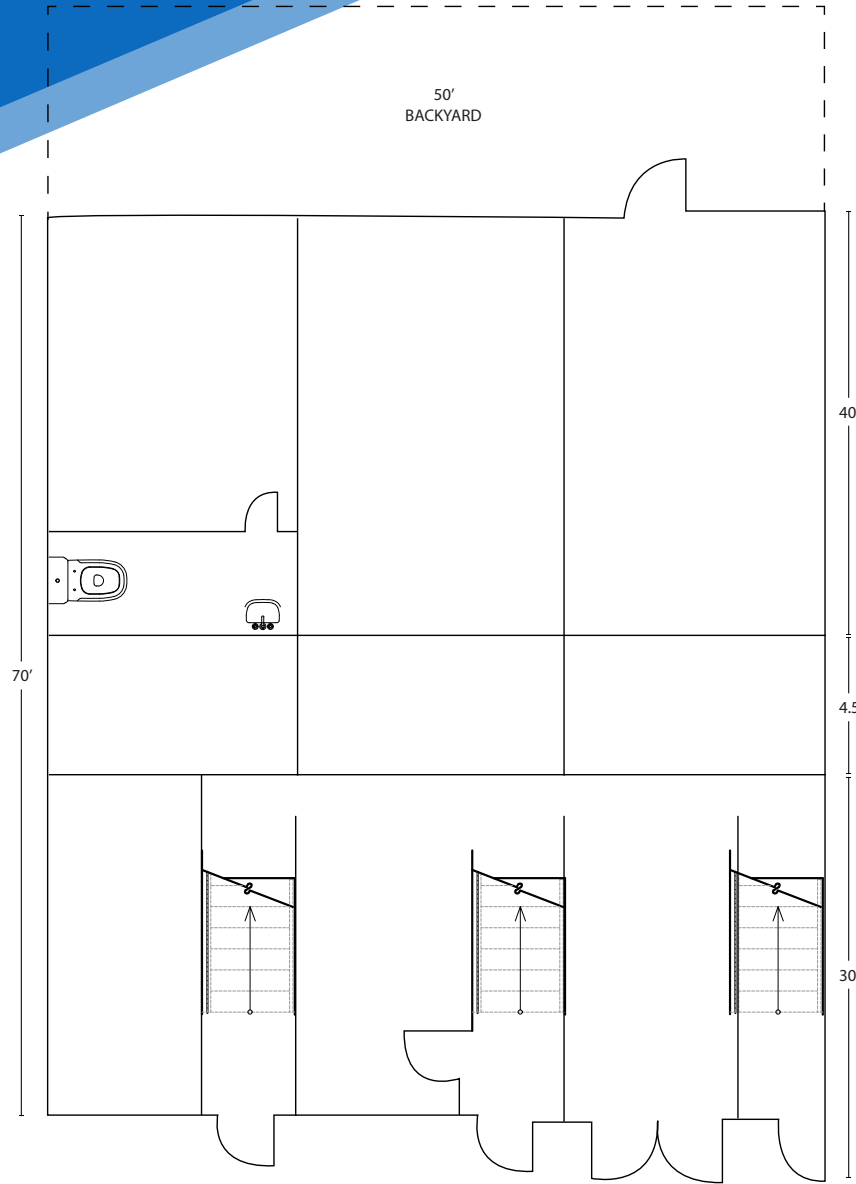
All information supplied is from sources deemed reliable and is furnished subject to errors, omissions, modifications, removal of the listing from sale or lease, and to any listing conditions, including the rates and manner of payment of commissions for particular offerings imposed by Meridian Capital Group. This information may include estimates and projections prepared by Meridian Capital Group with respect to future events, and these future events may or may not actually occur. Such estimates and projections reflect various assumptions concerning anticipated results. While Meridian Capital Group believes these assumptions are reasonable, there can be no assurance that any of these estimates and projections will be correct. Therefore, actual results may vary materially from these estimates and projections. Any square footage dimensions set forth are approximate.

420-424 WEST 51ST STREET

HELL'S KITCHEN, NYC | Between Ninth and Tenth Avenues

RETAIL/OFFICE FOR LEASE

FLOOR PLAN



JAMES FAMULARO
President

BEN BIBERAJ
Senior Director
703.434.1461
bbiberaj@meridiancapital.com

CAM PARSON
Associate
212.468.5954
cparson@meridiancapital.com



All information supplied is from sources deemed reliable and is furnished subject to errors, omissions, modifications, removal of the listing from sale or lease, and to any listing conditions, including the rates and manner of payment of commissions for particular offerings imposed by Meridian Capital Group. This information may include estimates and projections prepared by Meridian Capital Group with respect to future events, and these future events may or may not actually occur. Such estimates and projections reflect various assumptions concerning anticipated results. While Meridian Capital Group believes these assumptions are reasonable, there can be no assurance that any of these estimates and projections will be correct. Therefore, actual results may vary materially from these estimates and projections. Any square footage dimensions set forth are approximate.

420-424 WEST 51ST STREET

HELL'S KITCHEN, NYC | Between Ninth and Tenth Avenues

RETAIL/OFFICE FOR LEASE

Map showing retail/office space for lease in Hell's Kitchen, NYC, between Tenth and Ninth Avenues, bounded by W 53rd Street to W 48th Street. A central callout bubble highlights the address: 420-422 WEST 51ST STREET.

W 53RD STREET

TENTH AVENUE: MEE MI NIDITO (NOODLE SHOP), Casellula (CHEESE & WINE CAFE)

NINTH AVENUE: THE MEATBALL SHOP, YAKITORI TORISHIN, BADSHAH, THE BURGER & HOT DOG MONARCHY, MELT SHOP, STARBUCKS COFFEE

W 52ND STREET

DECIMO RISTOBAR, KARE THAI, Canada ma, ER'S KITCHEN

W 51ST STREET

Method TOTTO RAMEN, Basera INDIAN BISTRO, ATLAS SOCIAL CLUB, AS IS CRAFT BEER BAR, HB HK (HIBERNIA BAR), HELLS KITCHEN

W 50TH STREET

ABITINOS PIZZERIA, THE SOUND BITE GOSSIP BAR, AMISH MARKET, DESI DELI INDIAN RESTAURANT, THE HARROW, DUANEreade by Walgreens

W 49TH STREET

TENTH AVENUE: PERDITION

NINTH AVENUE: #1 ISTANBUL KEBAB HOUSE, CHURRASCARIA 74 ALAUFORSKA, TIME SQUARE Diner & Grill, BELVEDERE HOTEL, SOMBRERO MEXICAN RESTAURANT

W 48TH STREET

EIGHTH AVENUE: SHIMIZU SUSHI & SHOCHU BAR, RITE AID

NEIGHBORS

JAMES FAMULARO
President

BEN BIBERAJ
Senior Director
703.434.1461
bbiberaj@meridiancapital.com

CAM PARSON
Associate
212.468.5954
cparson@meridiancapital.com



All information supplied is from sources deemed reliable and is furnished subject to errors, omissions, modifications, removal of the listing from sale or lease, and to any listing conditions, including the rates and manner of payment of commissions for particular offerings imposed by Meridian Capital Group. This information may include estimates and projections prepared by Meridian Capital Group with respect to future events, and these future events may or may not actually occur. Such estimates and projections reflect various assumptions concerning anticipated results. While Meridian Capital Group believes these assumptions are reasonable, there can be no assurance that any of these estimates and projections will be correct. Therefore, actual results may vary materially from these estimates and projections. Any square footage dimensions set forth are approximate.