

66

MADISON AVENUE

NOMAD, NYC

Between 27th and 28th Streets

RETAIL SPACE FOR LEASE

EXACT SQUARE FOOTAGE

Ground Floor: 1691 SF

ASKING RENT

\$130/PSF

FRONTAGE

15 FT

POSSESSION

Arranged

TERM

Negotiable

COMMENTS

- Fully vented and built-out restaurant space
- Full liquor license in place
- Heavy foot traffic

NEIGHBORS

Essen • Rocco's Steakhouse • Shake Shack • Starbucks
• Chipotle • Museum of Sex • Mexicue • ATOBOY •
ilili Restaurant • Wagamama • The James Hotel

TRANSPORTATION

6 R W



JAMES FAMULARO
President

BEN BIBERAJ
Director
703.434.1461
bbiberaj@meridiancapital.com

ELLIOT WYGODA
Associate
212.468.5968
ewygoda@meridiancapital.com

MERIDIAN
RETAIL LEASING

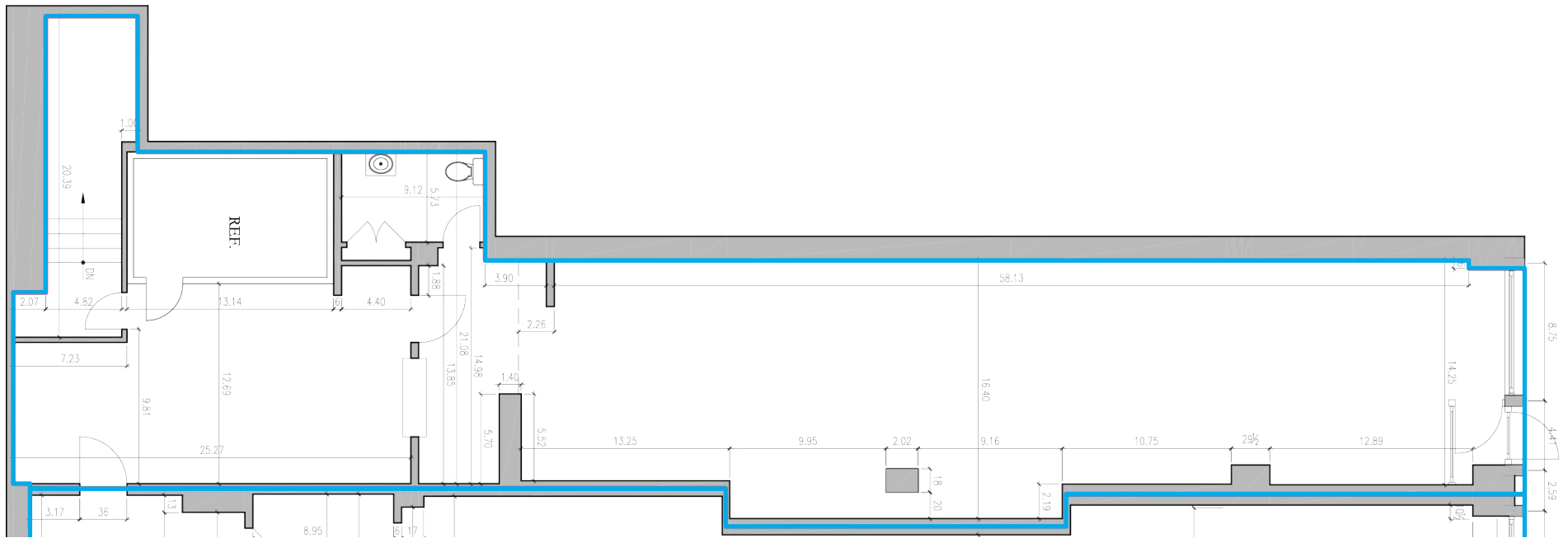
All information supplied is from sources deemed reliable and is furnished subject to errors, omissions, modifications, removal of the listing from sale or lease, and to any listing conditions, including the rates and manner of payment of commissions for particular offerings imposed by Meridian Capital Group. This information may include estimates and projections prepared by Meridian Capital Group with respect to future events, and these future events may or may not actually occur. Such estimates and projections reflect various assumptions concerning anticipated results. While Meridian Capital Group believes these assumptions are reasonable, there can be no assurance that any of these estimates and projections will be correct. Therefore, actual results may vary materially from these estimates and projections. Any square footage dimensions set forth are approximate.

66 MADISON AVE

NOMAD, NYC | Between 27th & 28th Streets

RETAIL SPACE FOR LEASE

FLOOR PLANS



JAMES FAMULARO
President

BEN BIBERAJ
Director
703.434.1461
bbiberaj@meridiancapital.com

ELLIOT WYGODA
Associate
212.468.5968
ewygoda@meridiancapital.com



All information supplied is from sources deemed reliable and is furnished subject to errors, omissions, modifications, removal of the listing from sale or lease, and to any listing conditions, including the rates and manner of payment of commissions for particular offerings imposed by Meridian Capital Group. This information may include estimates and projections prepared by Meridian Capital Group with respect to future events, and these future events may or may not actually occur. Such estimates and projections reflect various assumptions concerning anticipated results. While Meridian Capital Group believes these assumptions are reasonable, there can be no assurance that any of these estimates and projections will be correct. Therefore, actual results may vary materially from these estimates and projections. Any square footage dimensions set forth are approximate.

66 MADISON AVE

NOMAD, NYC | Between 27th & 28th Streets



YOUR NEIGHBORHOOD

RETAIL SPACE FOR LEASE

66 MADISON AVENUE

NEIGHBORHOOD: NOMAD, NYC | Between 27th & 28th Streets

ADJACENT BUSINESSES:

- ACE HOTEL NEW YORK
- BRESLIN BAR & DINING ROOM
- THE JOHN DORY OYSTER BAR
- MAXWELL'S CHOPHOUSE
- COFFEE STUMPTOWN
- BLACK SEED BAGELS
- DIG INN
- &pizza
- OHM SPA & LOUNGE
- WANT APOTHECARY
- NOMAD
- LITA TRADING CORP.
- sweetgreen
- chikarashi
- Cha Cha
- CHIPOTLE
- BONDI WHITEY PAINTS
- smile
- SICIS
- CATHAY BANK
- BIRCH COFFEE
- the MAVE
- CHASE
- hydradefacial
- MEXICUE
- BLACK BARN
- 'ESSEN'
- MO MATH
- 10/10
- WAGAMAMA
- Fun World
- inoon RESTAURANT

Madison Square Park

JAMES FAMULARO
President

BEN BIBERAJ
Director
703.434.1461
bbiberaj@meridiancapital.com

ELLIOT WYGODA
Associate
212.468.5968
ewygoda@meridiancapital.com

MERIDIAN
RETAIL LEASING

All information supplied is from sources deemed reliable and is furnished subject to errors, omissions, modifications, removal of the listing from sale or lease, and to any listing conditions, including the rates and manner of payment of commissions for particular offerings imposed by Meridian Capital Group. This information may include estimates and projections prepared by Meridian Capital Group with respect to future events, and these future events may or may not actually occur. Such estimates and projections reflect various assumptions concerning anticipated results. While Meridian Capital Group believes these assumptions are reasonable, there can be no assurance that any of these estimates and projections will be correct. Therefore, actual results may vary materially from these estimates and projections. Any square footage dimensions set forth are approximate.