

446

WEST 167TH STREET WASHINGTON HEIGHTS, NYC

Between Amsterdam and Edgecomb
Avenues

COMMUNITY FACILITY SPACE FOR LEASE

APPROXIMATE SIZE

Ground Floor: 5,405 SF
Second Floor: 1,580 SF
Legal Lower Level: 2,330 SF

Total Usable SF: 9,315

TERM

Longterm

ASKING RENT

\$35/PSF

POSSESSION

Immediately

COMMENTS

- Brand New Development
- White Box Space
- Elevator
- Sprinkler and Fire Supression System in Place
- High Residential Area
- Directly Across from KIPP Washington Heights Middle School

NEIGHBORS

MS 328 Manhattan Middle School for Scientific Inquiry •
Middle School 326 Writers Today & Leaders Tomorrow
• Gregorio Luperon High School For Science and
Mathematics • Middle School 324 Patria Mirabal • Pre-
School 8 Luis Belliard • Pre-School 4 Duke Ellington

TRANSPORTATION

B D m101 m2



JAMES FAMULARO
President

DANE HARLOWE
Director
212.468.5966
dharlowe@meridiancapital.com

DANIEL RACHLINE
Associate
212.468.5956
drachline@meridiancapital.com

MERIDIAN
RETAIL LEASING

All information supplied is from sources deemed reliable and is furnished subject to errors, omissions, modifications, removal of the listing from sale or lease, and to any listing conditions, including the rates and manner of payment of commissions for particular offerings imposed by Meridian Capital Group. This information may include estimates and projections prepared by Meridian Capital Group with respect to future events, and these future events may or may not actually occur. Such estimates and projections reflect various assumptions concerning anticipated results. While Meridian Capital Group believes these assumptions are reasonable, there can be no assurance that any of these estimates and projections will be correct. Therefore, actual results may vary materially from these estimates and projections. Any square footage dimensions set forth are approximate.

446 WEST 167TH STREET

WASHINGTON HEIGHTS, NYC | Between Amsterdam and Edgecomb Avenues

COMMUNITY FACILITY SPACE FOR LEASE



INTERIOR

JAMES FAMULARO
President

DANE HARLOWE
Director
212.468.5966
dharlowe@meridiancapital.com

DANIEL RACHLINE
Associate
212.468.5956
drachline@meridiancapital.com



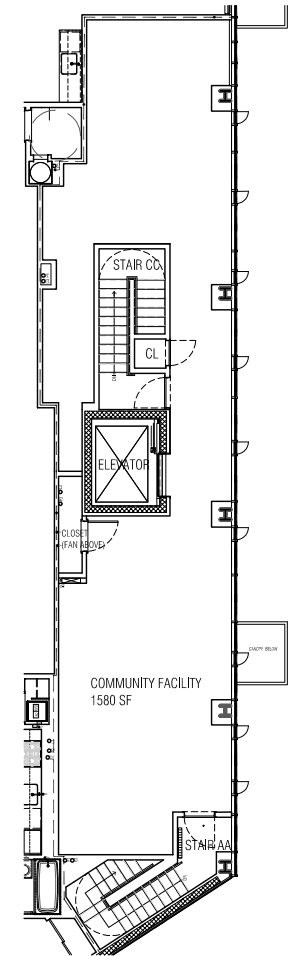
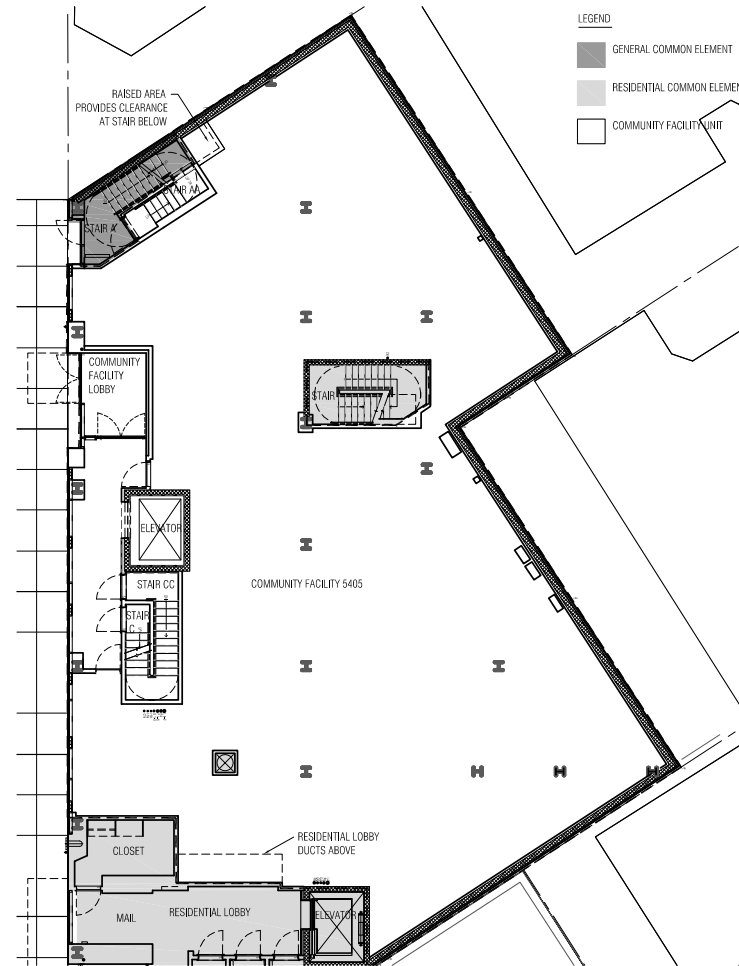
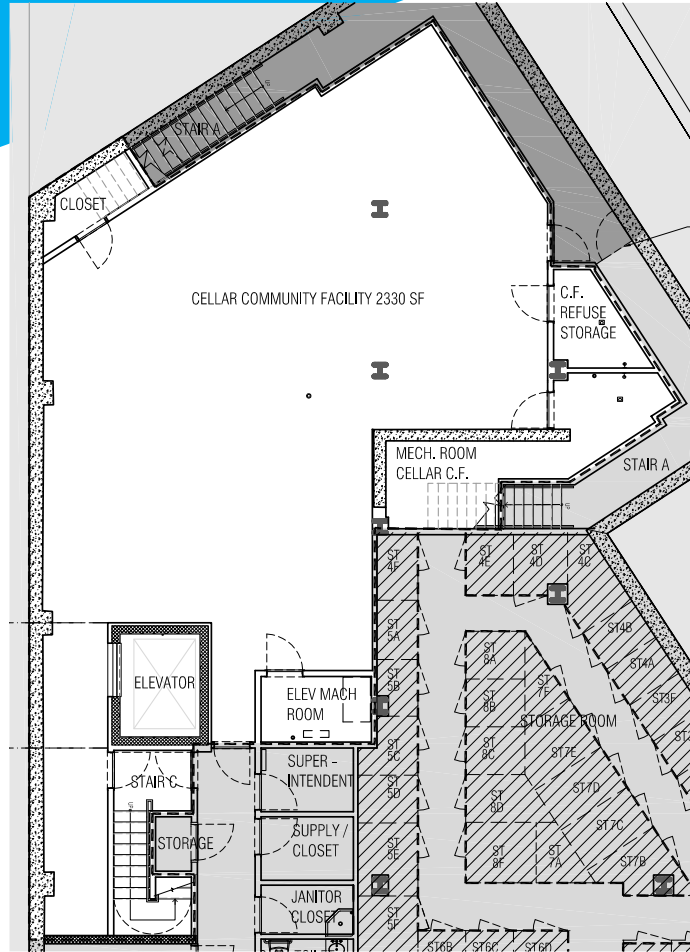
All information supplied is from sources deemed reliable and is furnished subject to errors, omissions, modifications, removal of the listing from sale or lease, and to any listing conditions, including the rates and manner of payment of commissions for particular offerings imposed by Meridian Capital Group. This information may include estimates and projections prepared by Meridian Capital Group with respect to future events, and these future events may or may not actually occur. Such estimates and projections reflect various assumptions concerning anticipated results. While Meridian Capital Group believes these assumptions are reasonable, there can be no assurance that any of these estimates and projections will be correct. Therefore, actual results may vary materially from these estimates and projections. Any square footage dimensions set forth are approximate.

446 WEST 167TH STREET

WASHINGTON HEIGHTS, NYC | Between Amsterdam and Edgecomb Avenues

COMMUNITY FACILITY SPACE FOR LEASE

FLOOR PLANS



JAMES FAMULARO
President

DANE HARLOWE
Director
212.468.5966
dharlowe@meridiancapital.com

DANIEL RACHLINE
Associate
212.468.5956
drachline@meridiancapital.com



All information supplied is from sources deemed reliable and is furnished subject to errors, omissions, modifications, removal of the listing from sale or lease, and to any listing conditions, including the rates and manner of payment of commissions for particular offerings imposed by Meridian Capital Group. This information may include estimates and projections prepared by Meridian Capital Group with respect to future events, and these future events may or may not actually occur. Such estimates and projections reflect various assumptions concerning anticipated results. While Meridian Capital Group believes these assumptions are reasonable, there can be no assurance that any of these estimates and projections will be correct. Therefore, actual results may vary materially from these estimates and projections. Any square footage dimensions set forth are approximate.

446 WEST 167TH STREET

WASHINGTON HEIGHTS, NYC | Between Amsterdam and Edgecomb Avenues

COMMUNITY FACILITY SPACE FOR LEASE



YOUR NEIGHBORS

JAMES FAMULARO
President

DANE HARLOWE
Director
212.468.5966
dharlowe@meridiancapital.com

DANIEL RACHLINE
Associate
212.468.5956
drachline@meridiancapital.com



All information supplied is from sources deemed reliable and is furnished subject to errors, omissions, modifications, removal of the listing from sale or lease, and to any listing conditions, including the rates and manner of payment of commissions for particular offerings imposed by Meridian Capital Group. This information may include estimates and projections prepared by Meridian Capital Group with respect to future events, and these future events may or may not actually occur. Such estimates and projections reflect various assumptions concerning anticipated results. While Meridian Capital Group believes these assumptions are reasonable, there can be no assurance that any of these estimates and projections will be correct. Therefore, actual results may vary materially from these estimates and projections. Any square footage dimensions set forth are approximate.