

545

THIRD AVENUE

MURRAY HILL, NYC

Between East 36th Street
and Third Avenue

RETAIL FOR LEASE

JAMES FAMULARO

President

KEVIN BISCONTI

Director

212.468.5962

kb@meridiancapital.com

JOHN ROESCH

Director

212.468.5971

jr@meridiancapital.com

 **MERIDIAN**
RETAIL LEASING



545

THIRD AVENUE

MURRAY HILL, NYC

Between East 36th Street
and Third Avenue

RETAIL FOR LEASE

APPROXIMATE SIZE

Ground Floor: 8,000 SF

Lower Level: 2,905 SF

Total: 10,905 SF

ASKING RENT

Upon Request

TERM

10+ Years

FRONTAGE

60 FT

POSSESSION

Immediate

COMMENTS

- All uses and divisions considered
- Located on the corner of East 36th and Third Avenue
- In the Heart of Murray Hill
- Former Walgreen's
- Space will be delivered fully white-boxed with electrical, plumbing and HVAC systems fully functioning

NEIGHBORS

Sarges Deli • Bagel Boss • El Rio Grande •
D'agostino Supermarkets • Duane Reade •
Starbucks • Shake Shack • Grand Central Terminal
• Jackson Hole Burgers • McDonalds • CVS

TRANSPORTATION

4 5 6 7 S



PROPERTY INFORMATION

JAMES FAMULARO
President

KEVIN BISCONTI
Director
212.468.5962
kb@meridiancapital.com

JOHN ROESCH
Director
212.468.5971
jr@meridiancapital.com

 **MERIDIAN**
RETAIL LEASING

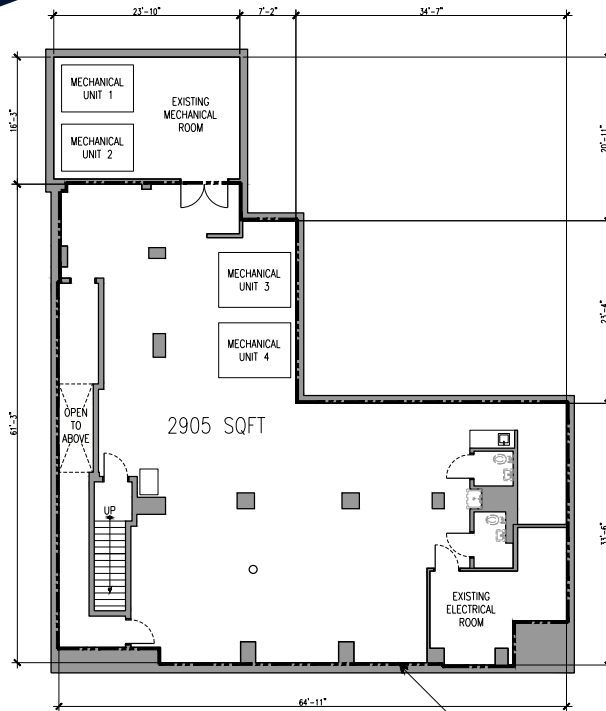
All information supplied is from sources deemed reliable and is furnished subject to errors, omissions, modifications, removal of the listing from sale or lease, and to any listing conditions, including the rates and manner of payment of commissions for particular offerings imposed by Meridian Capital Group. This information may include estimates and projections prepared by Meridian Capital Group with respect to future events, and these future events may or may not actually occur. Such estimates and projections reflect various assumptions concerning anticipated results. While Meridian Capital Group believes these assumptions are reasonable, there can be no assurance that any of these estimates and projections will be correct. Therefore, actual results may vary materially from these estimates and projections. Any square footage dimensions set forth are approximate.

545 THIRD AVENUE

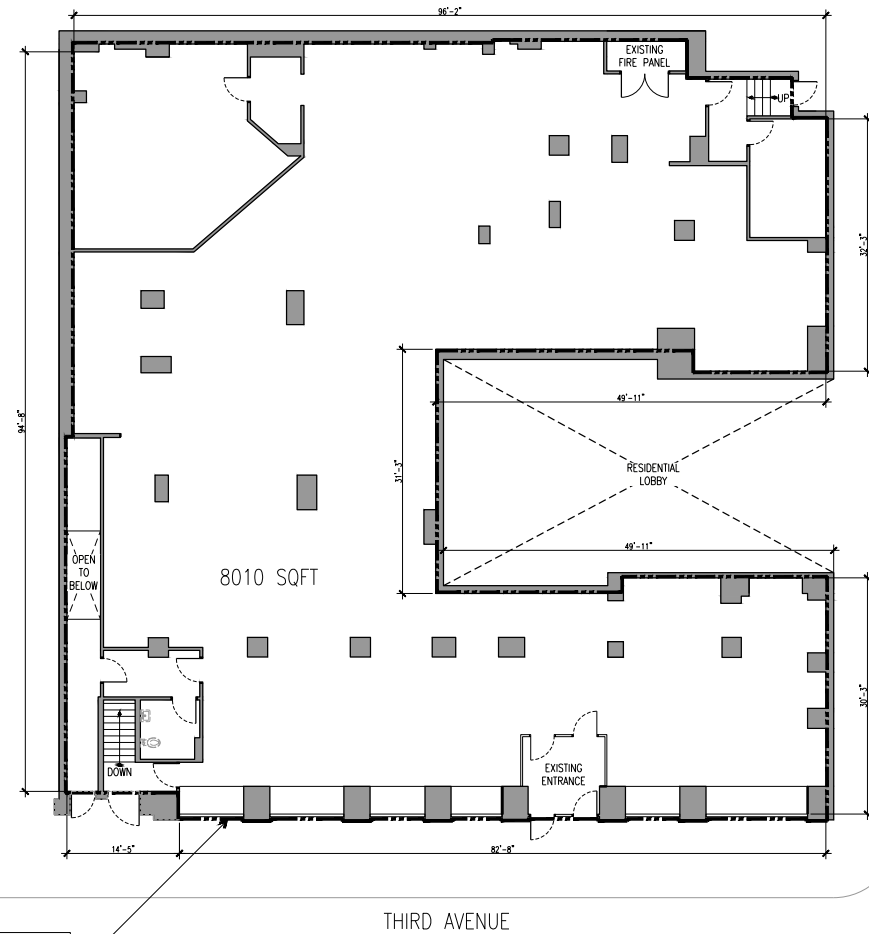
MURRAY HILL, NYC | Corner of East 36th Street & Third Avenue

RETAIL FOR LEASE

FLOOR PLANS



1 LEVEL ZERO
1/8"=1'-0"



2 LEVEL ONE
1/8"=1'-0"

LINE OF CALCULATED
SQUARE FOOTAGE

JAMES FAMULARO
President

KEVIN BISCONTI
Director
212.468.5962
kb@meridiancapital.com

JOHN ROESCH
Director
212.468.5971
jr@meridiancapital.com

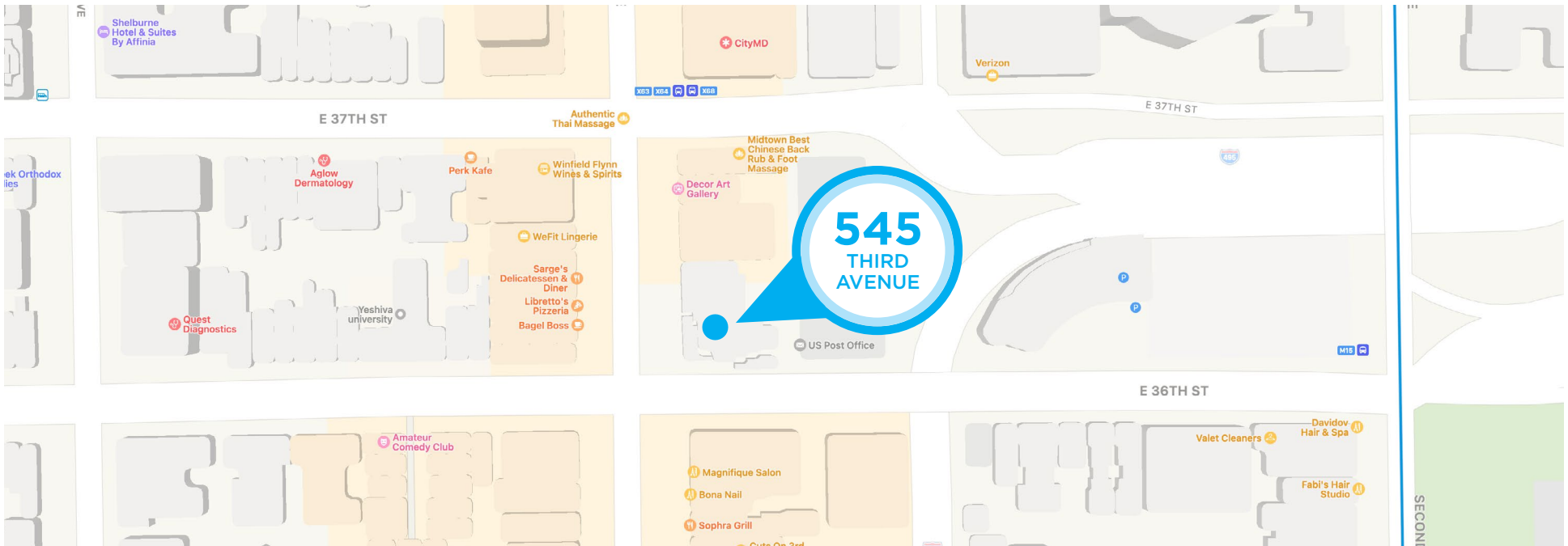


All information supplied is from sources deemed reliable and is furnished subject to errors, omissions, modifications, removal of the listing from sale or lease, and to any listing conditions, including the rates and manner of payment of commissions for particular offerings imposed by Meridian Capital Group. This information may include estimates and projections prepared by Meridian Capital Group with respect to future events, and these future events may or may not actually occur. Such estimates and projections reflect various assumptions concerning anticipated results. While Meridian Capital Group believes these assumptions are reasonable, there can be no assurance that any of these estimates and projections will be correct. Therefore, actual results may vary materially from these estimates and projections. Any square footage dimensions set forth are approximate.

545 THIRD AVENUE

MURRAY HILL, NYC | Corner of East 36th Street & Third Avenue

RETAIL FOR LEASE



JAMES FAMULARO
President

KEVIN BISCONTI
Director
212.468.5962
kb@meridiancapital.com

JOHN ROESCH
Director
212.468.5971
jr@meridiancapital.com

MERIDIAN
RETAIL LEASING

All information supplied is from sources deemed reliable and is furnished subject to errors, omissions, modifications, removal of the listing from sale or lease, and to any listing conditions, including the rates and manner of payment of commissions for particular offerings imposed by Meridian Capital Group. This information may include estimates and projections prepared by Meridian Capital Group with respect to future events, and these future events may or may not actually occur. Such estimates and projections reflect various assumptions concerning anticipated results. While Meridian Capital Group believes these assumptions are reasonable, there can be no assurance that any of these estimates and projections will be correct. Therefore, actual results may vary materially from these estimates and projections. Any square footage dimensions set forth are approximate.