

# 325

## EAST 5<sup>TH</sup> STREET EAST VILLAGE, NYC

Between First & Second Avenues

RETAIL/RESTAURANT FOR LEASE

### APPROXIMATE SIZE

~~SPACE A~~ Leased

~~Ground Floor: 500 SF~~

### SPACE B

Ground Floor: 800 SF + Basement

### ASKING RENT

~~SPACE A~~

~~Ground Floor: \$4,995/Month~~

~~\$3,995/Month~~

### SPACE B

Ground Floor: ~~\$5,995/Month~~ Reduced

\$5,750/Month

### TERM

Negotiable

### POSSESSION

Immediate

### FRONTAGE

12 FT

### COMMENTS

- Prime location in East Village
- Space is in white-box condition
- Space B is **fully vented**
- All uses considered

### NEIGHBORS

Mighty Quinns • Dim Sum Palace • The Boiler Room •  
Marufuku Ramen • Mayamezcal • Yubp • The Headless  
Widow • Brooklyn Dumpling Shop • Cooper

### TRANSPORTATION



JAMES FAMULARO  
President

BEN BIBERAJ  
Senior Director  
703.434.1461  
bbiberaj@meridiancapital.com

CAM PARSON  
Associate  
212.468.5954  
cparson@meridiancapital.com

 **MERIDIAN**  
RETAIL LEASING

All information supplied is from sources deemed reliable and is furnished subject to errors, omissions, modifications, removal of the listing from sale or lease, and to any listing conditions, including the rates and manner of payment of commissions for particular offerings imposed by Meridian Capital Group. This information may include estimates and projections prepared by Meridian Capital Group with respect to future events, and these future events may or may not actually occur. Such estimates and projections reflect various assumptions concerning anticipated results. While Meridian Capital Group believes these assumptions are reasonable, there can be no assurance that any of these estimates and projections will be correct. Therefore, actual results may vary materially from these estimates and projections. Any square footage dimensions set forth are approximate.



325 EAST 5<sup>TH</sup> STREET

EAST VILLAGE, NYC | Between First and Second Avenues

RETAIL/RESTAURANT FOR LEASE



SPACE A



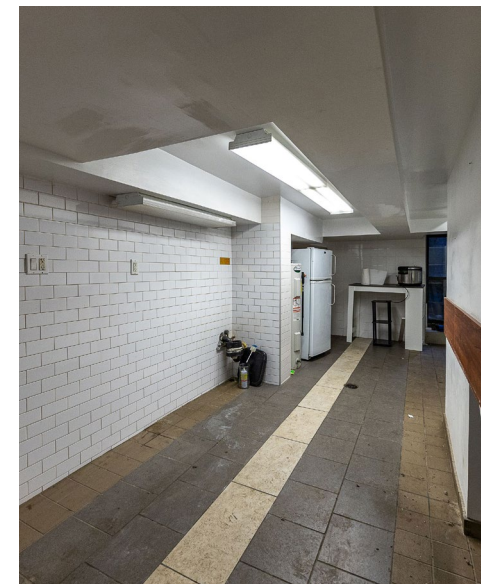
SPACE B



SPACE A



SPACE B



INTERIOR

JAMES FAMULARO  
President

BEN BIBERAJ  
Senior Director  
703.434.1461  
[bbiberaj@meridiancapital.com](mailto:bbiberaj@meridiancapital.com)

CAM PARSON  
Associate  
212.468.5954  
[cparson@meridiancapital.com](mailto:cparson@meridiancapital.com)

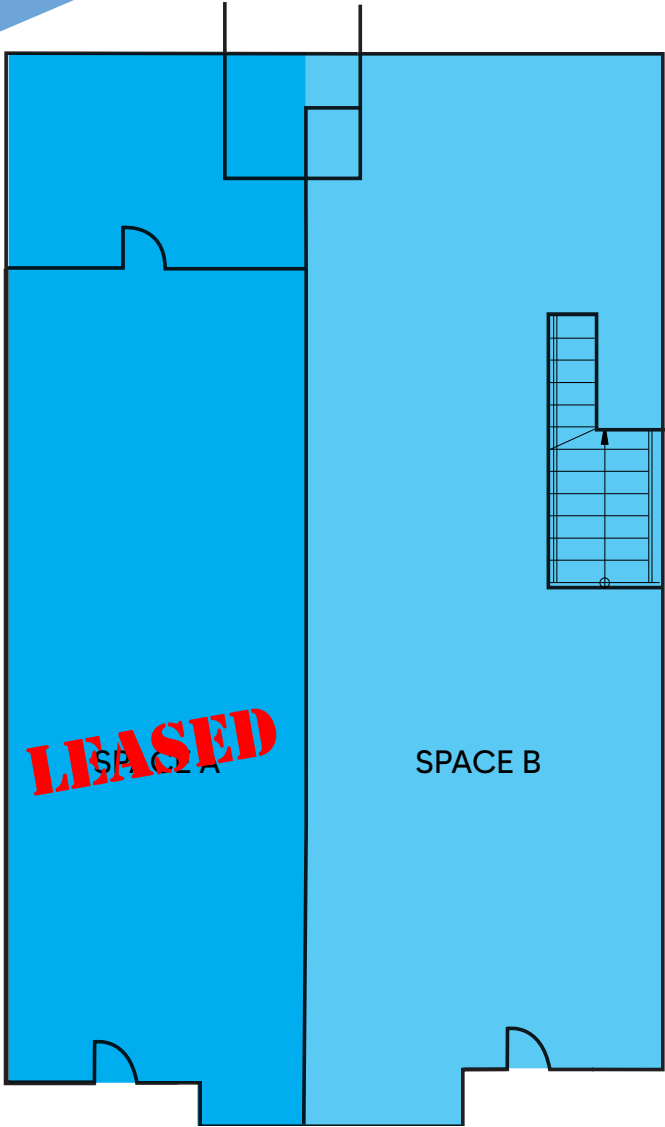


All information supplied is from sources deemed reliable and is furnished subject to errors, omissions, modifications, removal of the listing from sale or lease, and to any listing conditions, including the rates and manner of payment of commissions for particular offerings imposed by Meridian Capital Group. This information may include estimates and projections prepared by Meridian Capital Group with respect to future events, and these future events may or may not actually occur. Such estimates and projections reflect various assumptions concerning anticipated results. While Meridian Capital Group believes these assumptions are reasonable, there can be no assurance that any of these estimates and projections will be correct. Therefore, actual results may vary materially from these estimates and projections. Any square footage dimensions set forth are approximate.

325 EAST 5<sup>TH</sup> STREET  
EAST VILLAGE, NYC | Between First and Second Avenues

RETAIL/RESTAURANT FOR LEASE

FLOOR PLAN



GROUND FLOOR

JAMES FAMULARO  
President

BEN BIBERAJ  
Senior Director  
703.434.1461  
bbiberaj@meridiancapital.com

CAM PARSON  
Associate  
212.468.5954  
cparson@meridiancapital.com



All information supplied is from sources deemed reliable and is furnished subject to errors, omissions, modifications, removal of the listing from sale or lease, and to any listing conditions, including the rates and manner of payment of commissions for particular offerings imposed by Meridian Capital Group. This information may include estimates and projections prepared by Meridian Capital Group with respect to future events, and these future events may or may not actually occur. Such estimates and projections reflect various assumptions concerning anticipated results. While Meridian Capital Group believes these assumptions are reasonable, there can be no assurance that any of these estimates and projections will be correct. Therefore, actual results may vary materially from these estimates and projections. Any square footage dimensions set forth are approximate.

325 EAST 5<sup>TH</sup> STREET

EAST VILLAGE, NYC | Between First and Second Avenues

RETAIL/RESTAURANT FOR LEASE

NEIGHBORS



JAMES FAMULARO  
President

BEN BIBERAJ  
Senior Director  
703.434.1461  
bbiberaj@meridiancapital.com

CAM PARSON  
Associate  
212.468.5954  
cparson@meridiancapital.com

**MERIDIAN**  
RETAIL LEASING

All information supplied is from sources deemed reliable and is furnished subject to errors, omissions, modifications, removal of the listing from sale or lease, and to any listing conditions, including the rates and manner of payment of commissions for particular offerings imposed by Meridian Capital Group. This information may include estimates and projections prepared by Meridian Capital Group with respect to future events, and these future events may or may not actually occur. Such estimates and projections reflect various assumptions concerning anticipated results. While Meridian Capital Group believes these assumptions are reasonable, there can be no assurance that any of these estimates and projections will be correct. Therefore, actual results may vary materially from these estimates and projections. Any square footage dimensions set forth are approximate.