

# 307

**EAST 60<sup>TH</sup> STREET**  
MIDTOWN EAST, NYC

Between Second Avenue &  
Queensboro Bridge Exit

RETAIL/MEDICAL FOR LEASE

## RETAIL/MEDICAL SPACE FOR LEASE

Ben Biberaj  
**703.434.1461**

@jamesfamularo

**MERIDIAN**  
RETAIL LEASING

### APPROXIMATE SIZE

Ground Floor: 2,000 SF

Second Floor: 2,000 SF

**Total: 4,000 SF**

### ASKING RENT

\$25,000/Month **Reduced**

\$22,000/Month

### POSSESSION

Immediate

### TERM

Negotiable

### FRONTAGE

10 FT

### COMMENTS

- Built-out medical space
- Former radiology office
- Elevator access to the 2<sup>nd</sup> Floor
- Just off the corner of Second Avenue

### NEIGHBORS

Equinox • Sunglass Hut • Chipotle • Serendipity 3 •  
Orange Theory • Bloomingdales • Whole Foods • Mr.  
Chow • Dunkin' • P.J. Clarke's • The Home Depot

### TRANSPORTATION



**JAMES FAMULARO**  
President

**BEN BIBERAJ**  
Senior Director  
703.434.1461  
bbiberaj@meridiancapital.com

**ELLIOT WYGODA**  
Associate  
212.468.5968  
ewygoda@meridiancapital.com

**MERIDIAN**  
RETAIL LEASING

All information supplied is from sources deemed reliable and is furnished subject to errors, omissions, modifications, removal of the listing from sale or lease, and to any listing conditions, including the rates and manner of payment of commissions for particular offerings imposed by Meridian Capital Group. This information may include estimates and projections prepared by Meridian Capital Group with respect to future events, and these future events may or may not actually occur. Such estimates and projections reflect various assumptions concerning anticipated results. While Meridian Capital Group believes these assumptions are reasonable, there can be no assurance that any of these estimates and projections will be correct. Therefore, actual results may vary materially from these estimates and projections. Any square footage dimensions set forth are approximate.



## 307 EAST 60<sup>TH</sup> STREET

MIDTOWN EAST, NYC | Between Second Avenue and Queensboro Bridge Exit

RETAIL/MEDICAL FOR LEASE



INTERIOR

JAMES FAMULARO  
President

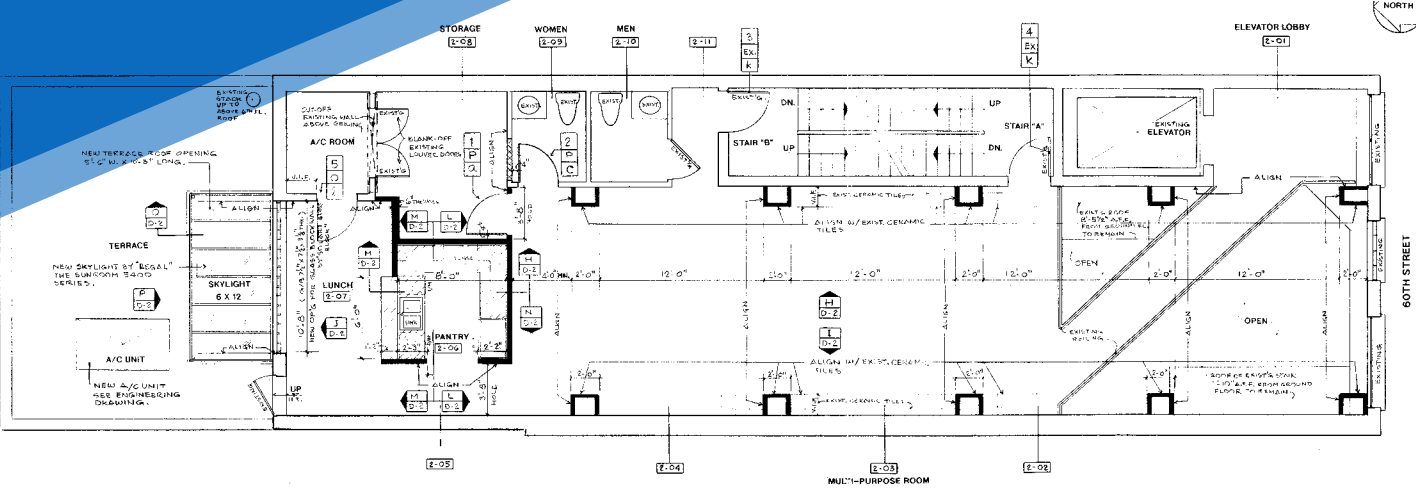
BEN BIBERAJ  
Senior Director  
703.434.1461  
bbiberaj@meridiancapital.com

ELLIOT WYGODA  
Associate  
212.468.5968  
ewygoda@meridiancapital.com

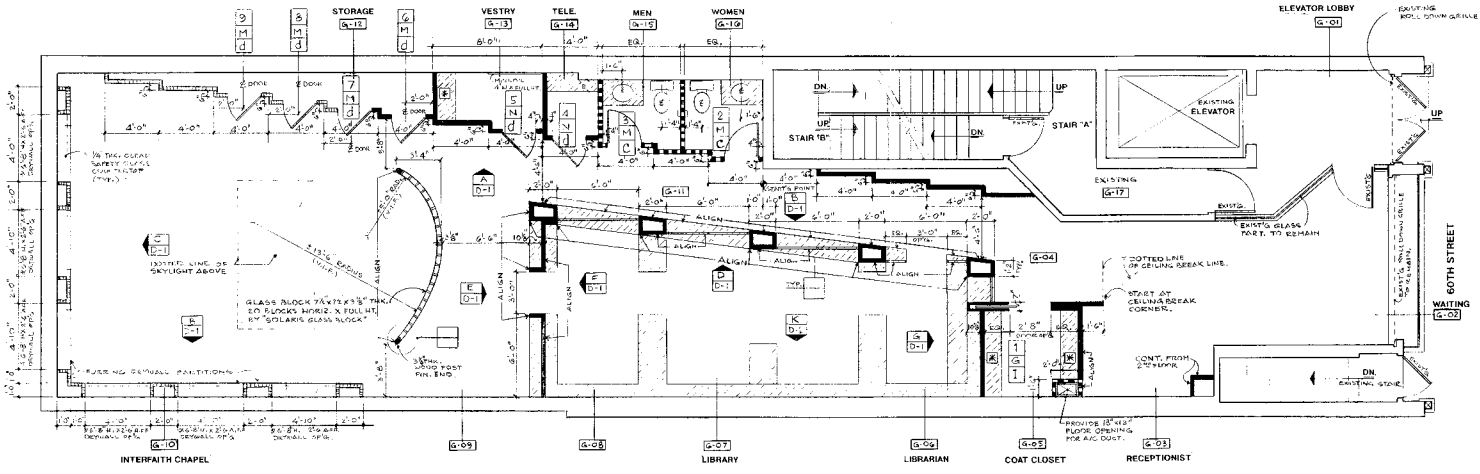


All information supplied is from sources deemed reliable and is furnished subject to errors, omissions, modifications, removal of the listing from sale or lease, and to any listing conditions, including the rates and manner of payment of commissions for particular offerings imposed by Meridian Capital Group. This information may include estimates and projections prepared by Meridian Capital Group with respect to future events, and these future events may or may not actually occur. Such estimates and projections reflect various assumptions concerning anticipated results. While Meridian Capital Group believes these assumptions are reasonable, there can be no assurance that any of these estimates and projections will be correct. Therefore, actual results may vary materially from these estimates and projections. Any square footage dimensions set forth are approximate.





2ND FLOOR



GROUND FLOOR

FLOOR PLAN

JAMES FAMULARO  
President

BEN BIBERAJ  
Senior Director  
703.434.1461  
bbiberaj@meridiancapital.com

ELLIOT WYGODA  
Associate  
212.468.5968  
ewygoda@meridiancapital.com



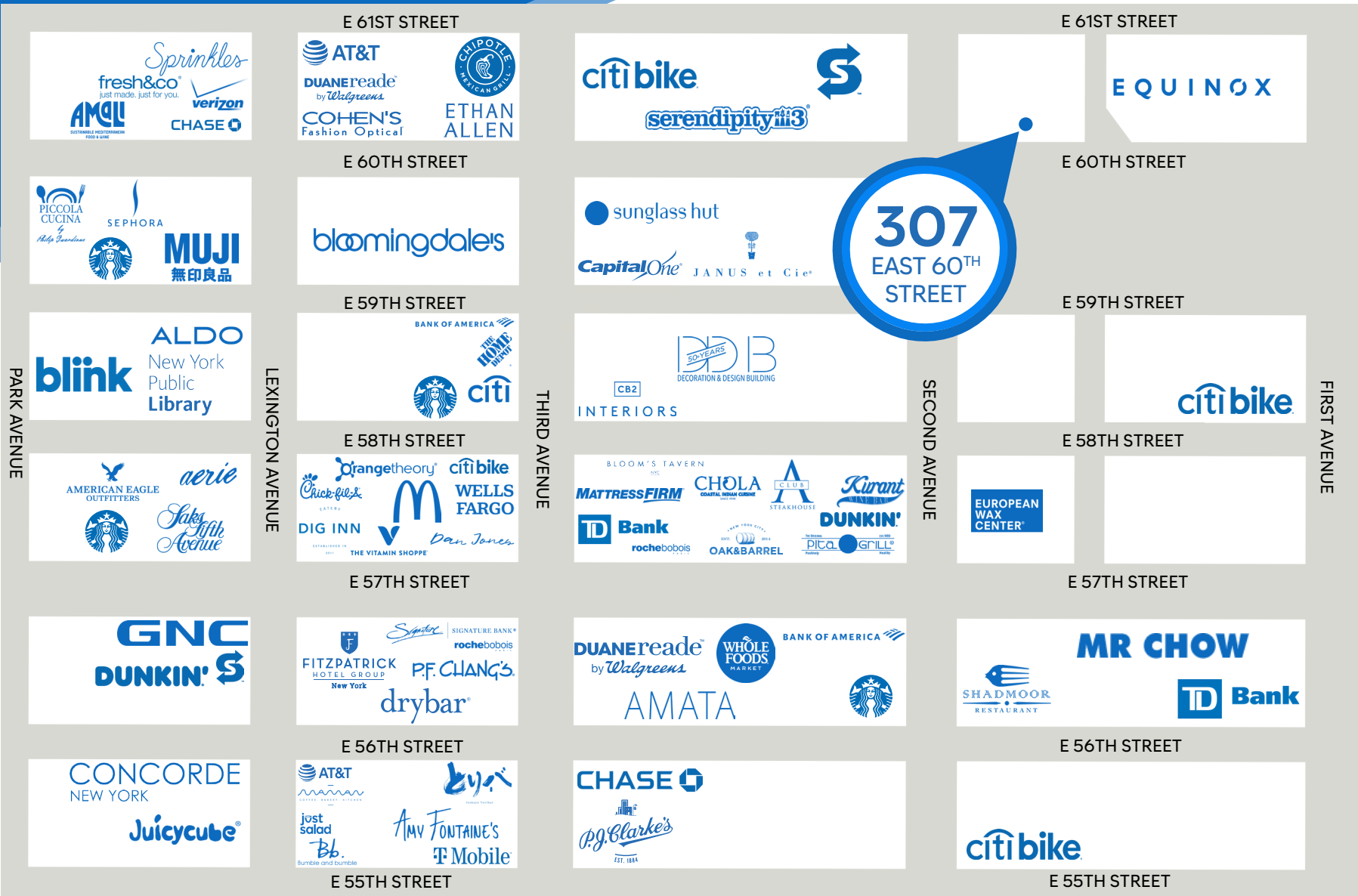
All information supplied is from sources deemed reliable and is furnished subject to errors, omissions, modifications, removal of the listing from sale or lease, and to any listing conditions, including the rates and manner of payment of commissions for particular offerings imposed by Meridian Capital Group. This information may include estimates and projections prepared by Meridian Capital Group with respect to future events, and these future events may or may not actually occur. Such estimates and projections reflect various assumptions concerning anticipated results. While Meridian Capital Group believes these assumptions are reasonable, there can be no assurance that any of these estimates and projections will be correct. Therefore, actual results may vary materially from these estimates and projections. Any square footage dimensions set forth are approximate.

## 307 EAST 60<sup>TH</sup> STREET

MIDTOWN EAST, NYC | Between Second Avenue and Queensboro Bridge Exit

RETAIL/MEDICAL FOR LEASE

NEIGHBORS



JAMES FAMULARO  
President

BEN BIBERAJ  
Senior Director  
703.434.1461  
bbiberaj@meridiancapital.com

ELLIOT WYGODA  
Associate  
212.468.5968  
ewygoda@meridiancapital.com

**MERIDIAN**  
RETAIL LEASING

All information supplied is from sources deemed reliable and is furnished subject to errors, omissions, modifications, removal of the listing from sale or lease, and to any listing conditions, including the rates and manner of payment of commissions for particular offerings imposed by Meridian Capital Group. This information may include estimates and projections prepared by Meridian Capital Group with respect to future events, and these future events may or may not actually occur. Such estimates and projections reflect various assumptions concerning anticipated results. While Meridian Capital Group believes these assumptions are reasonable, there can be no assurance that any of these estimates and projections will be correct. Therefore, actual results may vary materially from these estimates and projections. Any square footage dimensions set forth are approximate.