

645

UNION STREET

BROOKLYN | NEW YORK

RESTAURANT & ROOFTOP
FOR LEASE

JAMES FAMULARO
President

BEN BIBERAJ
Senior Director
703.434.1461
bbiberaj@meridiancapital.com

CAM PARSON
Associate
212.468.5954
cparson@meridiancapital.com

 **MERIDIAN**
RETAIL LEASING



645

UNION STREET GOWANUS, BROOKLYN

Between Third & Fourth Avenues

APPROXIMATE SIZE

Lower Level: 8,215 SF + 2,800 SF Rooftop

ASKING RENT

~~\$30,000/Month~~ - Reduced
\$25,000/Month

TERM

Long Term

POSSESSION

Immediate

COMMENTS

- Fitted restaurant, bar and rooftop opportunity at the base of a 76-room Sonder Hotel
- Space is comprised of a lounge with double height ceilings, restaurant with skylight, and dining room with a bar and a sunken courtyard. Total occupancy of 215 people
- Rooftop has views of Downtown Brooklyn and Barclay's
- 100 feet away from Union Street subway station (2.3 million annual ridership)

NEIGHBORS

Lavender Lake • Wild East Brewery • Strong Rope Brewery • Pig Beach • Union Hall • Threes Brewing • Royal Palms • Starbucks • Blink Fitness • Kick Axe Throwing Brooklyn • Dinosaur Bar-B-Que • Finback Brooklyn

TRANSPORTATION

N R W

JAMES FAMULARO
President

BEN BIBERAJ
Senior Director
703.434.1461
bbiberaj@meridiancapital.com

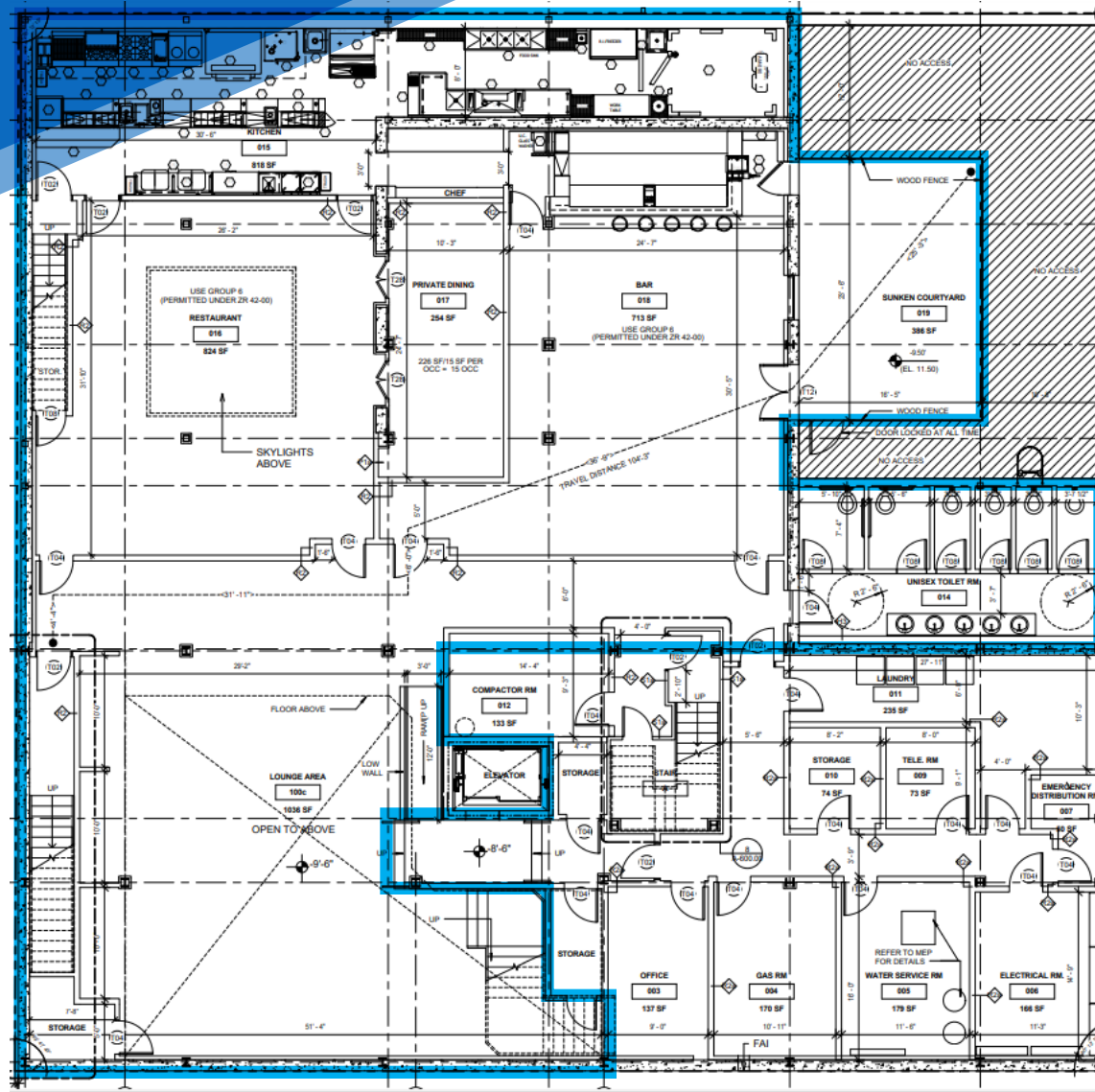
CAM PARSON
Associate
212.468.5954
cparson@meridiancapital.com

RESTAURANT & ROOFTOP FOR LEASE



MERIDIAN
RETAIL LEASING

All information supplied is from sources deemed reliable and is furnished subject to errors, omissions, modifications, removal of the listing from sale or lease, and to any listing conditions, including the rates and manner of payment of commissions for particular offerings imposed by Meridian Capital Group. This information may include estimates and projections prepared by Meridian Capital Group with respect to future events, and these future events may or may not actually occur. Such estimates and projections reflect various assumptions concerning anticipated results. While Meridian Capital Group believes these assumptions are reasonable, there can be no assurance that any of these estimates and projections will be correct. Therefore, actual results may vary materially from these estimates and projections. Any square footage dimensions set forth are approximate.



LOWER LEVEL

FLOOR PLAN | LOWER LEVEL

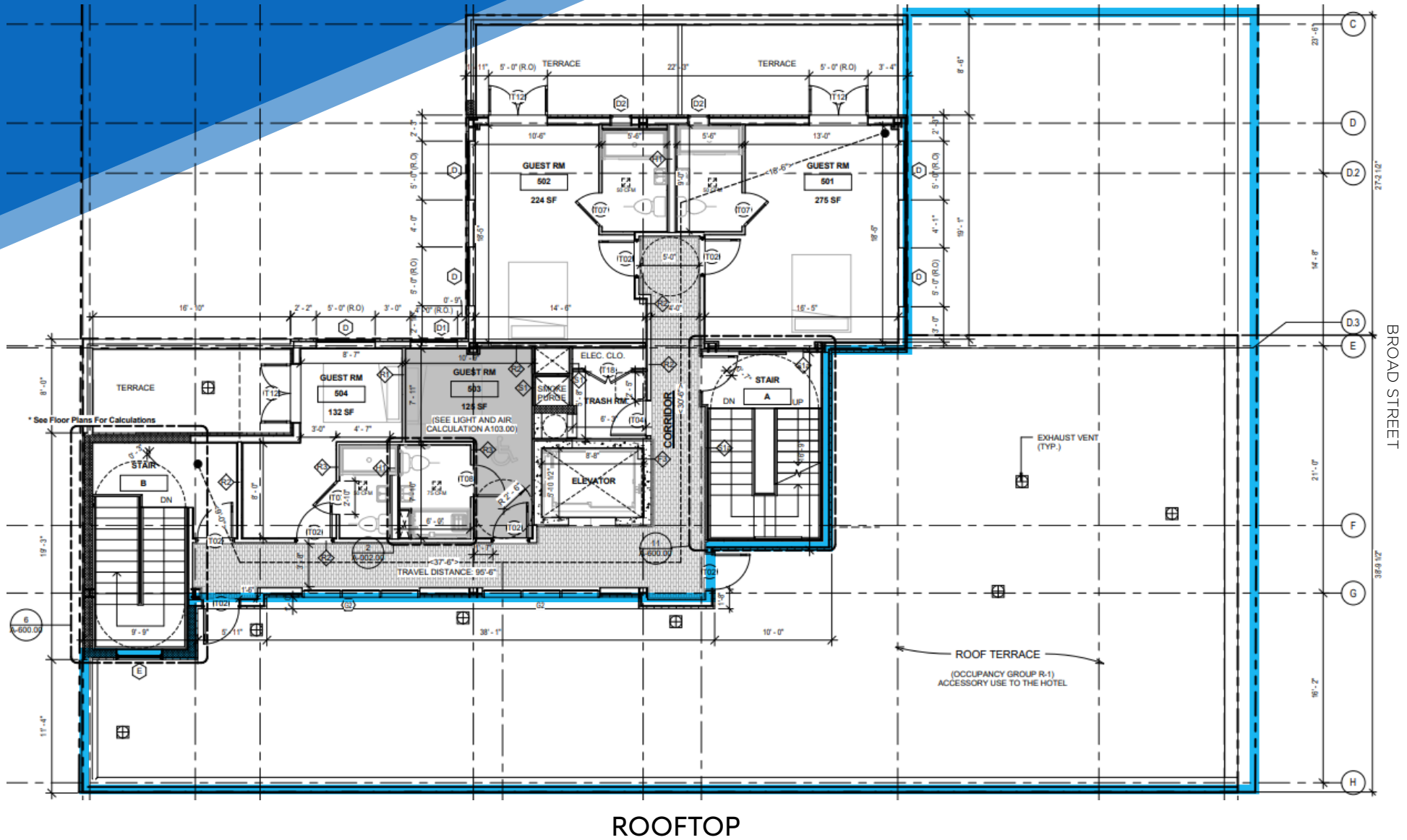
JAMES FAMULARO
President

BEN BIBERAJ
Senior Director
703.434.1461
bbiberaj@meridiancapital.com

CAM PARSON
Associate
212.468.5954
cparson@meridiancapital.com



FLOOR PLAN | ROOFTOP



JAMES FAMULARO
President

BEN BIBERAJ
Senior Director
703.434.1461
bbiberaj@meridiancapital.com

CAM PARSON
Associate
212.468.5954
cparson@meridiancapital.com



645 UNION STREET

GOWANUS, BROOKLYN | Between Third and Fourth Avenues

RESTAURANT & ROOFTOP FOR LEASE



THE GOWANUS

JAMES FAMULARO
President

BEN BIBERAJ
Senior Director
703.434.1461
bbiberaj@meridiancapital.com

CAM PARSON
Associate
212.468.5954
cparson@meridiancapital.com



All information supplied is from sources deemed reliable and is furnished subject to errors, omissions, modifications, removal of the listing from sale or lease, and to any listing conditions, including the rates and manner of payment of commissions for particular offerings imposed by Meridian Capital Group. This information may include estimates and projections prepared by Meridian Capital Group with respect to future events, and these future events may or may not actually occur. Such estimates and projections reflect various assumptions concerning anticipated results. While Meridian Capital Group believes these assumptions are reasonable, there can be no assurance that any of these estimates and projections will be correct. Therefore, actual results may vary materially from these estimates and projections. Any square footage dimensions set forth are approximate.

645 UNION STREET

GOWANUS, BROOKLYN | Between Third and Fourth Avenues

RESTAURANT & ROOFTOP FOR LEASE

NEIGHBORS



JAMES FAMULARO
President

BEN BIBERAJ
Senior Director
703.434.1461
bbiberaj@meridiancapital.com

CAM PARSON
Associate
212.468.5954
cparson@meridiancapital.com



All information supplied is from sources deemed reliable and is furnished subject to errors, omissions, modifications, removal of the listing from sale or lease, and to any listing conditions, including the rates and manner of payment of commissions for particular offerings imposed by Meridian Capital Group. This information may include estimates and projections prepared by Meridian Capital Group with respect to future events, and these future events may or may not actually occur. Such estimates and projections reflect various assumptions concerning anticipated results. While Meridian Capital Group believes these assumptions are reasonable, there can be no assurance that any of these estimates and projections will be correct. Therefore, actual results may vary materially from these estimates and projections. Any square footage dimensions set forth are approximate.