

# 88

## FULTON STREET FINANCIAL DISTRICT, NYC

Corner of Gold & William Streets

RETAIL FOR LEASE

### APPROXIMATE SIZE

1,600 SF

### ASKING RENT

Upon Request

### POSSESSION

Immediate

### TERM

Negotiable

### COMMENTS

- Vented former restaurant spaces
- 7-day-a-week foot traffic
- At the base of a 196-unit residential building

### NEIGHBORS

Chipotle • Dunkin' • Starbucks • CVS • Chick-fil-A • Irving Farm • Hale & Hearty • Downtown Little School • NOBU Downtown • CityMD • ZARA • Shake Shack • Neuhaus Belgian Chocolate • Pressed Juicery • Baked by Melissa

### TRANSPORTATION

2 4 5 R W A C J Z

JAMES FAMULARO

President

BEN BIBERAJ

Senior Director

703.434.1461

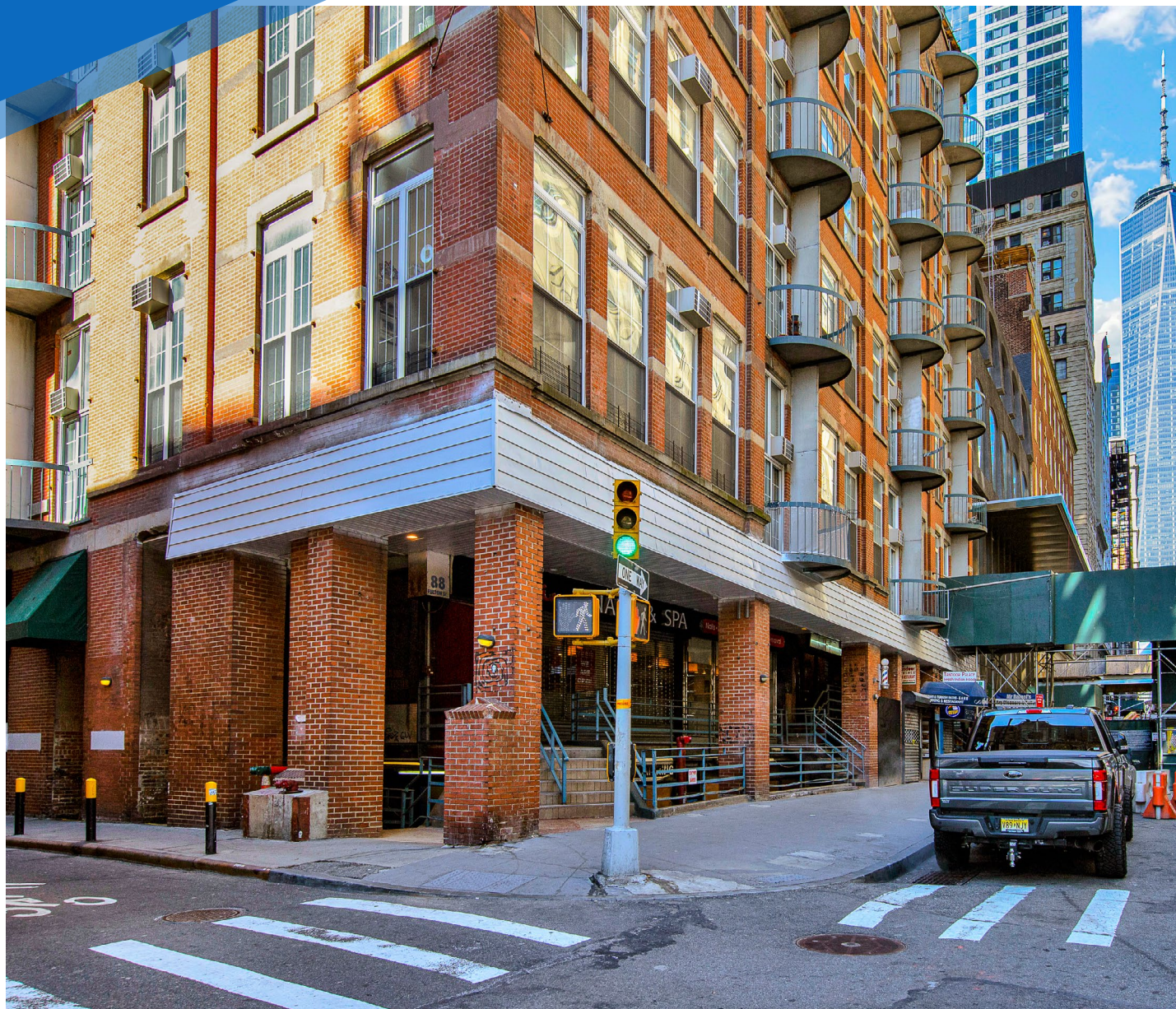
bbiberaj@meridiancapital.com

ELLIOT WYGODA

Associate

212.468.5968

ewygoda@meridiancapital.com



**MERIDIAN**  
RETAIL LEASING

All information supplied is from sources deemed reliable and is furnished subject to errors, omissions, modifications, removal of the listing from sale or lease, and to any listing conditions, including the rates and manner of payment of commissions for particular offerings imposed by Meridian Capital Group. This information may include estimates and projections prepared by Meridian Capital Group with respect to future events, and these future events may or may not actually occur. Such estimates and projections reflect various assumptions concerning anticipated results. While Meridian Capital Group believes these assumptions are reasonable, there can be no assurance that any of these estimates and projections will be correct. Therefore, actual results may vary materially from these estimates and projections. Any square footage dimensions set forth are approximate.

## 88 FULTON STREET

FINANCIAL DISTRICT, NYC | Corner of Gold and William Streets

RETAIL FOR LEASE



NEIGHBORS

JAMES FAMULARO  
President

BEN BIBERAJ  
Senior Director  
703.434.1461  
bbiberaj@meridiancapital.com

ELLIOT WYGODA  
Associate  
212.468.5968  
ewygoda@meridiancapital.com

**MERIDIAN**  
RETAIL LEASING

All information supplied is from sources deemed reliable and is furnished subject to errors, omissions, modifications, removal of the listing from sale or lease, and to any listing conditions, including the rates and manner of payment of commissions for particular offerings imposed by Meridian Capital Group. This information may include estimates and projections prepared by Meridian Capital Group with respect to future events, and these future events may or may not actually occur. Such estimates and projections reflect various assumptions concerning anticipated results. While Meridian Capital Group believes these assumptions are reasonable, there can be no assurance that any of these estimates and projections will be correct. Therefore, actual results may vary materially from these estimates and projections. Any square footage dimensions set forth are approximate.