

381

LENOX AVENUE HARLEM, NYC

Between West 129th & 130th Streets

RETAIL/RESTAURANT FOR LEASE



APPROXIMATE SIZE

~~Space A: 875 SF~~
~~Space B: 672 SF~~
Space C: 1,330 SF

ASKING RENT

~~Space A: \$8,000/Month~~
~~Space B: \$6,160/Month~~
Space C: \$8,125/Month

TERM

10 Years

POSSESSION

Immediate

FRONTAGE

20 FT

COMMENTS

- Excellent exposure on Lenox Avenue
- Former Michelin Star "Sushi Inoue Restaurant"
- Close proximity to 125th Street subway
- Thriving pocket of Central Harlem

NEIGHBORS

Harlem Hookah • The Noodle • Pandora • Cantina
• Dunkin' • Red Rooster Harlem • Insomnia Cookies

TRANSPORTATION

2 3

JAMES FAMULARO
President

DANE HARLOWE
Director
212.468.5966
dharlowe@meridiancapital.com

NOAM AZIZ
Associate
212.468.5984
naziz@meridiancapital.com

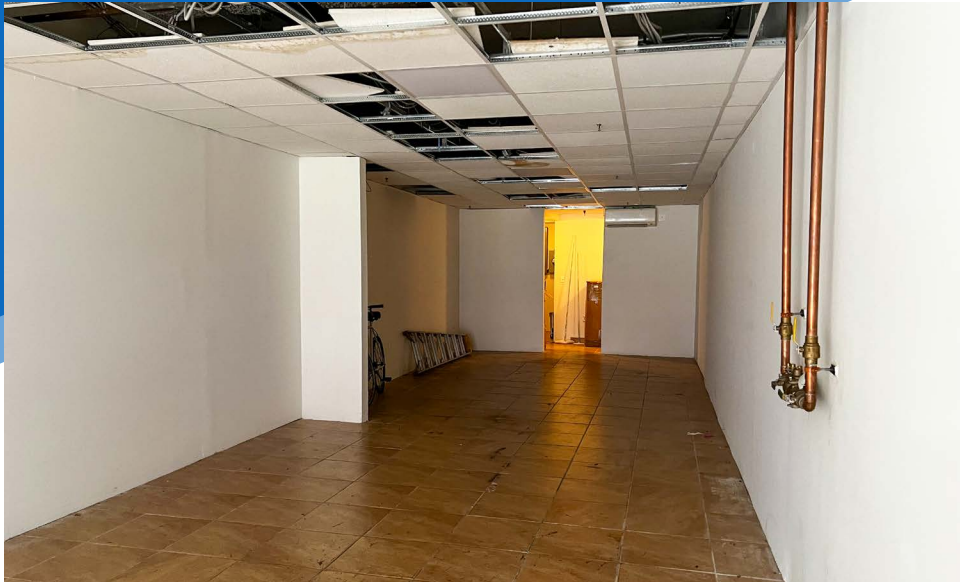


All information supplied is from sources deemed reliable and is furnished subject to errors, omissions, modifications, removal of the listing from sale or lease, and to any listing conditions, including the rates and manner of payment of commissions for particular offerings imposed by Meridian Capital Group. This information may include estimates and projections prepared by Meridian Capital Group with respect to future events, and these future events may or may not actually occur. Such estimates and projections reflect various assumptions concerning anticipated results. While Meridian Capital Group believes these assumptions are reasonable, there can be no assurance that any of these estimates and projections will be correct. Therefore, actual results may vary materially from these estimates and projections. Any square footage dimensions set forth are approximate.

381 LENOX AVENUE

HARLEM, NYC | Between West 129th and 130th Streets

RETAIL/RESTAURANT FOR LEASE



INTERIOR | SPACE C

JAMES FAMULARO
President

DANE HARLOWE
Director
212.468.5966
dharlowe@meridiancapital.com

NOAM AZIZ
Associate
212.468.5984
naziz@meridiancapital.com

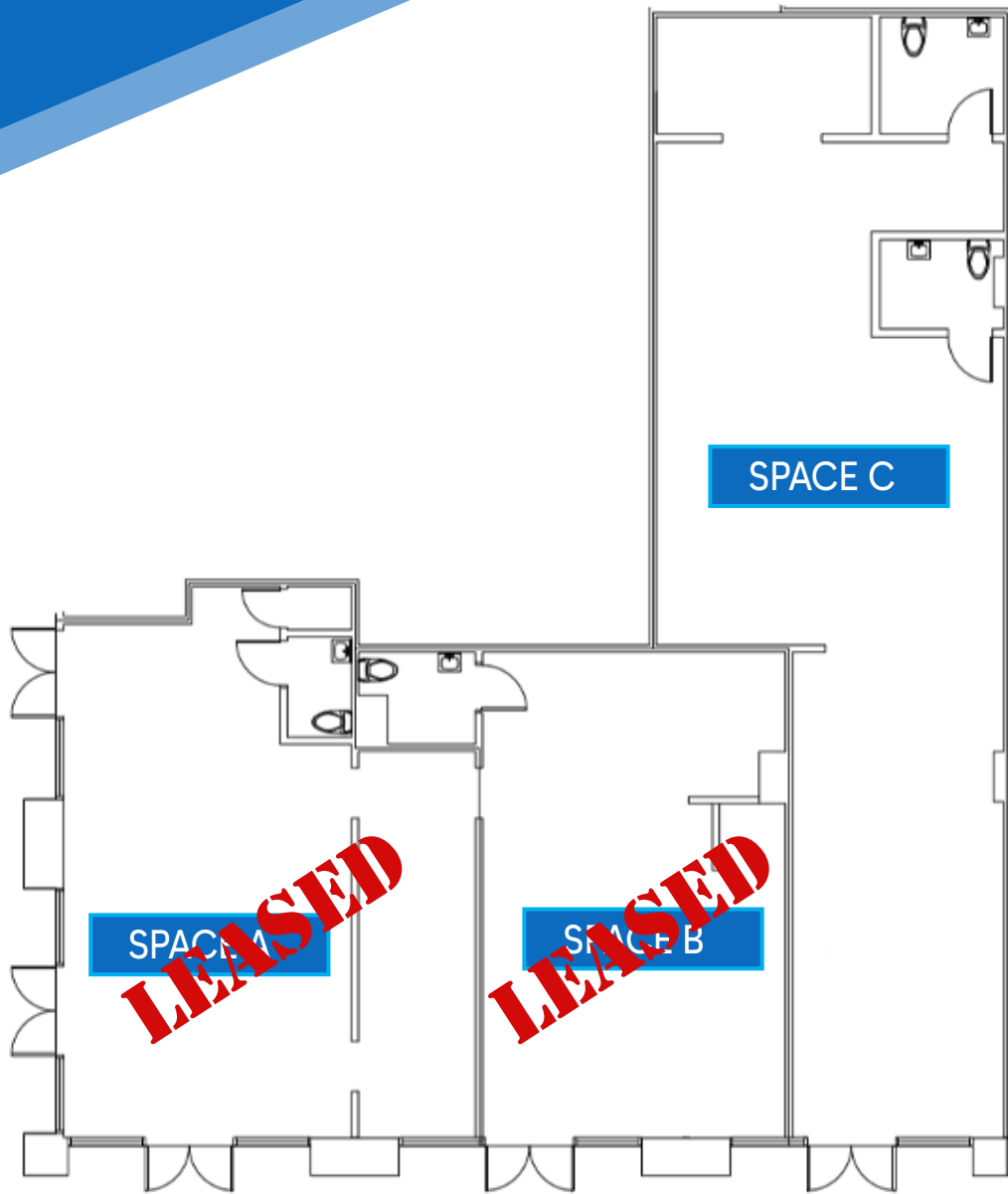


All information supplied is from sources deemed reliable and is furnished subject to errors, omissions, modifications, removal of the listing from sale or lease, and to any listing conditions, including the rates and manner of payment of commissions for particular offerings imposed by Meridian Capital Group. This information may include estimates and projections prepared by Meridian Capital Group with respect to future events, and these future events may or may not actually occur. Such estimates and projections reflect various assumptions concerning anticipated results. While Meridian Capital Group believes these assumptions are reasonable, there can be no assurance that any of these estimates and projections will be correct. Therefore, actual results may vary materially from these estimates and projections. Any square footage dimensions set forth are approximate.

381 LENOX AVENUE

HARLEM, NYC | Between West 129th and 130th Streets

RETAIL/RESTAURANT FOR LEASE



FLOOR PLAN

JAMES FAMULARO
President

DANE HARLOWE
Director
212.468.5966
dharlowe@meridiancapital.com

NOAM AZIZ
Associate
212.468.5984
naziz@meridiancapital.com



All information supplied is from sources deemed reliable and is furnished subject to errors, omissions, modifications, removal of the listing from sale or lease, and to any listing conditions, including the rates and manner of payment of commissions for particular offerings imposed by Meridian Capital Group. This information may include estimates and projections prepared by Meridian Capital Group with respect to future events, and these future events may or may not actually occur. Such estimates and projections reflect various assumptions concerning anticipated results. While Meridian Capital Group believes these assumptions are reasonable, there can be no assurance that any of these estimates and projections will be correct. Therefore, actual results may vary materially from these estimates and projections. Any square footage dimensions set forth are approximate.

381 LENOX AVENUE

HARLEM, NYC | Between West 129th and 130th Streets

RETAIL/RESTAURANT FOR LEASE



NEIGHBORS

JAMES FAMULARO
President

DANE HARLOWE
Director
212.468.5966
dharlowe@meridiancapital.com

NOAM AZIZ
Associate
212.468.5984
naziz@meridiancapital.com



All information supplied is from sources deemed reliable and is furnished subject to errors, omissions, modifications, removal of the listing from sale or lease, and to any listing conditions, including the rates and manner of payment of commissions for particular offerings imposed by Meridian Capital Group. This information may include estimates and projections prepared by Meridian Capital Group with respect to future events, and these future events may or may not actually occur. Such estimates and projections reflect various assumptions concerning anticipated results. While Meridian Capital Group believes these assumptions are reasonable, there can be no assurance that any of these estimates and projections will be correct. Therefore, actual results may vary materially from these estimates and projections. Any square footage dimensions set forth are approximate.