

# 90-02

## QUEENS BOULEVARD

QUEENS, NEW YORK

OFFICE FOR LEASE

Between Woodhaven Boulevard  
and 57<sup>th</sup> Avenue

### APPROXIMATE SIZE

Ground: 40,000 SF  
Usable Lower Level: 40,000 SF

### ASKING RENT

Ground: \$50 PSF  
Usable Lower Level: \$25 PSF

### FRONTAGE

350 FT

### COMMENTS

- Brand new development across from the Queens Center Mall
- ADA compliant elevator and bathrooms
- Option for private parking
- All divisions considered

### NEIGHBORS

Apple • Best Buy • Target • Macy's •  
Starbucks • Dunkin' • GAP • JCPenny •  
H&M • Chik-Fil-A • Shake Shack • Chipotle  
• Armani Exchange • Popeyes

### TRANSPORTATION



### POSSESSION

Immediate

### TERM

Long Term



**JAMES FAMULARO**  
President

**BEN BIBERAJ**  
Director  
703.434.1461  
bbiberaj@meridiancapital.com

**ELLIOT WYGODA**  
Associate  
212.468.5968  
ewygoda@meridiancapital.com



All information supplied is from sources deemed reliable and is furnished subject to errors, omissions, modifications, removal of the listing from sale or lease, and to any listing conditions, including the rates and manner of payment of commissions for particular offerings imposed by Meridian Capital Group. This information may include estimates and projections prepared by Meridian Capital Group with respect to future events, and these future events may or may not actually occur. Such estimates and projections reflect various assumptions concerning anticipated results. While Meridian Capital Group believes these assumptions are reasonable, there can be no assurance that any of these estimates and projections will be correct. Therefore, actual results may vary materially from these estimates and projections. Any square footage dimensions set forth are approximate.



# 90-02 QUEENS BOULEVARD

QUEENS, New York | Between Woodhaven Boulevard & 57<sup>th</sup> Avenue

OFFICE FOR LEASE



INTERIOR

**JAMES FAMULARO**  
President

**BEN BIBERAJ**  
Director  
703.434.1461  
bbiberaj@meridiancapital.com

**ELLIOT WYGODA**  
Associate  
212.468.5968  
ewygoda@meridiancapital.com

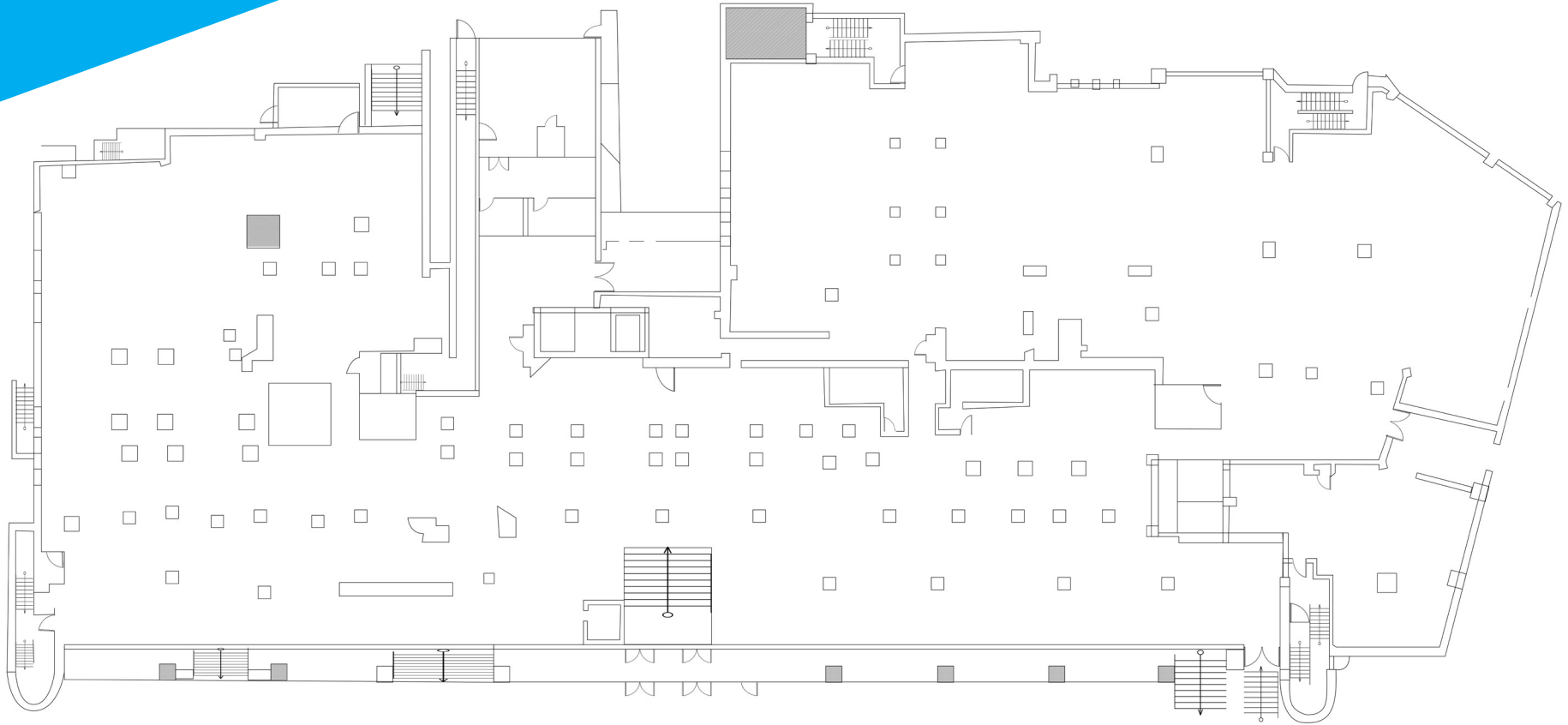


All information supplied is from sources deemed reliable and is furnished subject to errors, omissions, modifications, removal of the listing from sale or lease, and to any listing conditions, including the rates and manner of payment of commissions for particular offerings imposed by Meridian Capital Group. This information may include estimates and projections prepared by Meridian Capital Group with respect to future events, and these future events may or may not actually occur. Such estimates and projections reflect various assumptions concerning anticipated results. While Meridian Capital Group believes these assumptions are reasonable, there can be no assurance that any of these estimates and projections will be correct. Therefore, actual results may vary materially from these estimates and projections. Any square footage dimensions set forth are approximate.

# 90-02 QUEENS BOULEVARD

QUEENS, New York | Between Woodhaven Boulevard & 57<sup>th</sup> Avenue

OFFICE FOR LEASE



FLOOR PLAN

## GROUND FLOOR

**JAMES FAMULARO**  
President

**BEN BIBERAJ**  
Director  
703.434.1461  
bbiberaj@meridiancapital.com

**ELLIOT WYGODA**  
Associate  
212.468.5968  
ewygoda@meridiancapital.com



All information supplied is from sources deemed reliable and is furnished subject to errors, omissions, modifications, removal of the listing from sale or lease, and to any listing conditions, including the rates and manner of payment of commissions for particular offerings imposed by Meridian Capital Group. This information may include estimates and projections prepared by Meridian Capital Group with respect to future events, and these future events may or may not actually occur. Such estimates and projections reflect various assumptions concerning anticipated results. While Meridian Capital Group believes these assumptions are reasonable, there can be no assurance that any of these estimates and projections will be correct. Therefore, actual results may vary materially from these estimates and projections. Any square footage dimensions set forth are approximate.

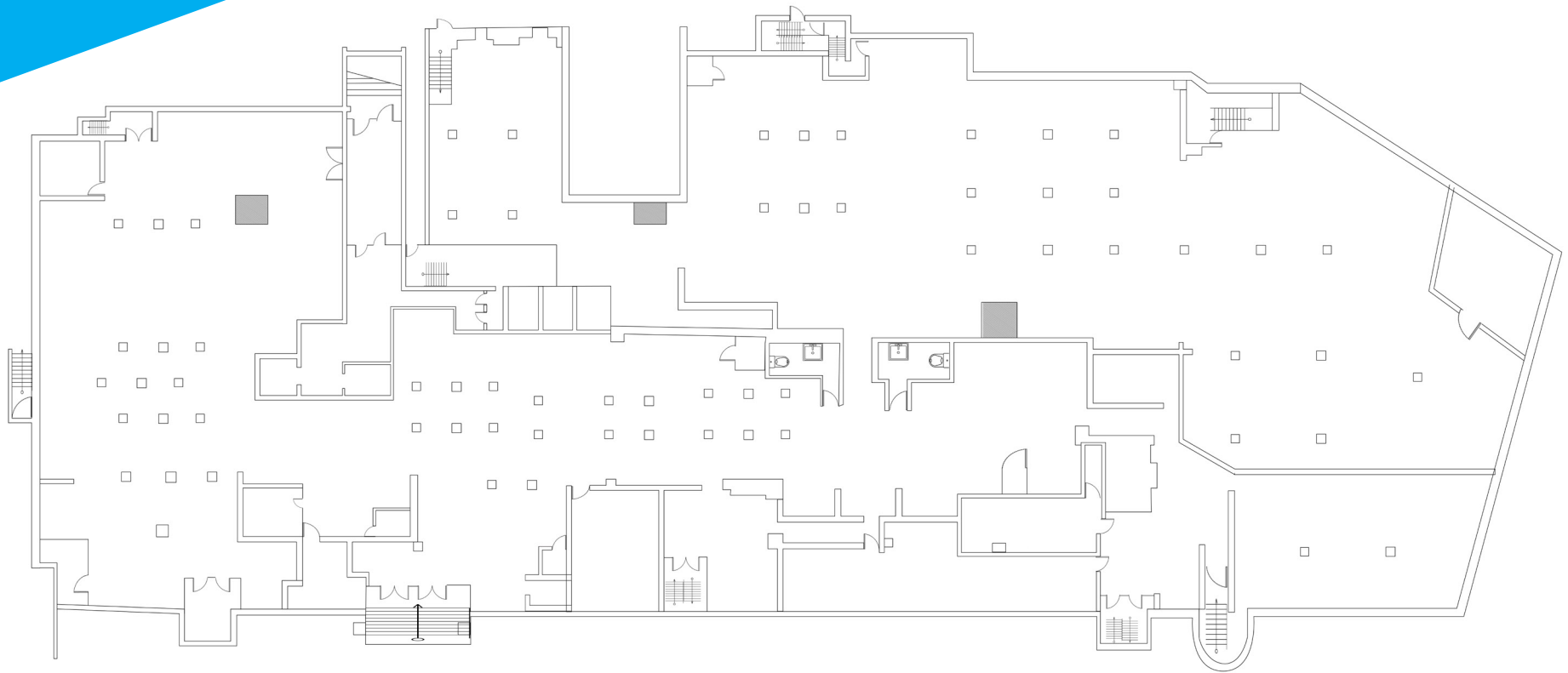


# 90-02 QUEENS BOULEVARD

QUEENS, New York | Between Woodhaven Boulevard & 57<sup>th</sup> Avenue

OFFICE FOR LEASE

FLOOR PLAN



## LOWER LEVEL

**JAMES FAMULARO**  
President

**BEN BIBERAJ**  
Director  
703.434.1461  
bbiberaj@meridiancapital.com

**ELLIOT WYGODA**  
Associate  
212.468.5968  
ewygoda@meridiancapital.com

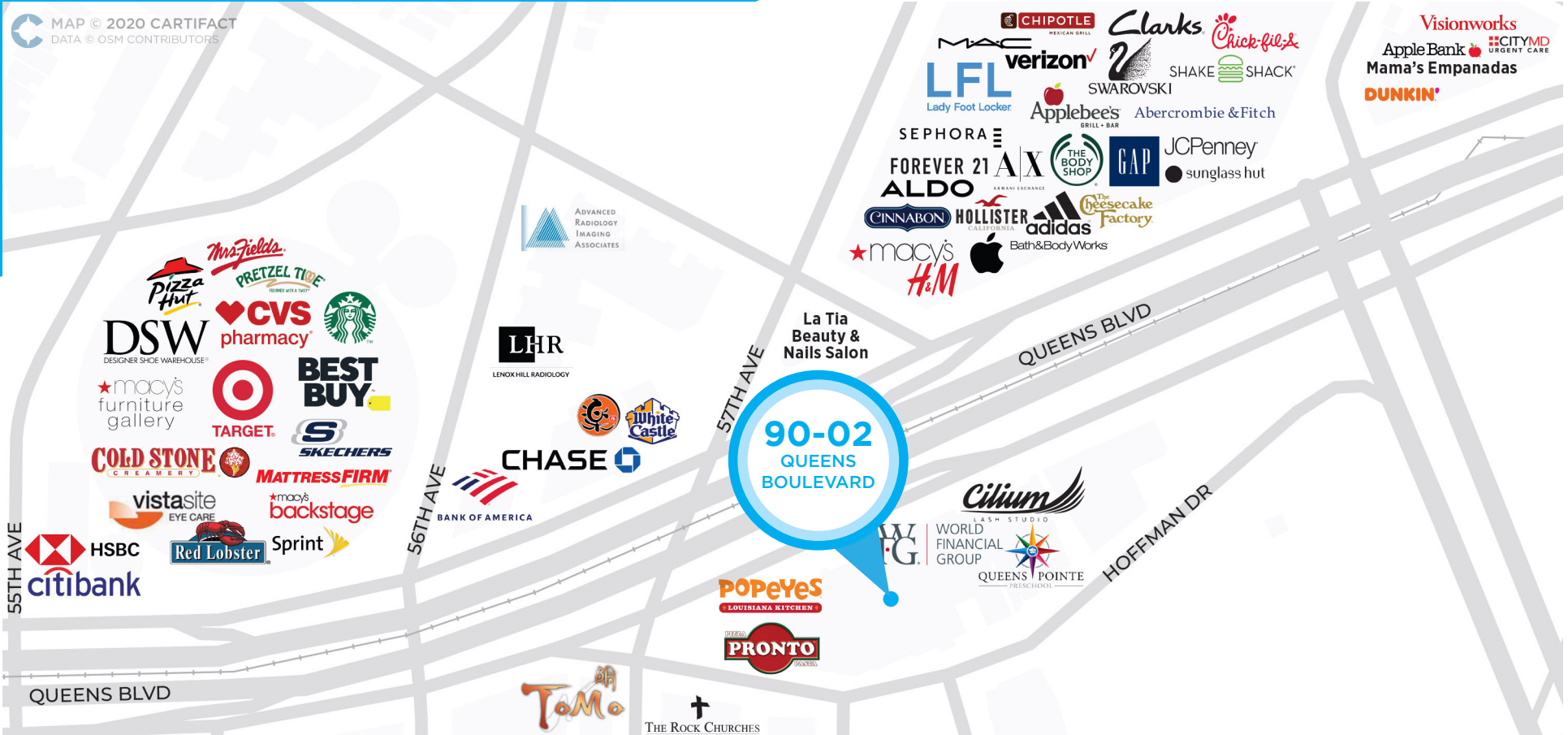


All information supplied is from sources deemed reliable and is furnished subject to errors, omissions, modifications, removal of the listing from sale or lease, and to any listing conditions, including the rates and manner of payment of commissions for particular offerings imposed by Meridian Capital Group. This information may include estimates and projections prepared by Meridian Capital Group with respect to future events, and these future events may or may not actually occur. Such estimates and projections reflect various assumptions concerning anticipated results. While Meridian Capital Group believes these assumptions are reasonable, there can be no assurance that any of these estimates and projections will be correct. Therefore, actual results may vary materially from these estimates and projections. Any square footage dimensions set forth are approximate.

# 90-02 QUEENS BOULEVARD

QUEENS, New York | Between Woodhaven Boulevard & 57<sup>th</sup> Avenue

OFFICE FOR LEASE



YOUR NEIGHBORHOOD



**JAMES FAMILARO**  
President

**BEN BIBERAJ**  
Director  
703.434.1461  
bbiberaj@meridiancapital.com

**ELLIOT WYGODA**  
Associate  
212.468.5968  
ewygoda@meridiancapital.com



All information supplied is from sources deemed reliable and is furnished subject to errors, omissions, modifications, removal of the listing from sale or lease, and to any listing conditions, including the rates and manner of payment of commissions for particular offerings imposed by Meridian Capital Group. This information may include estimates and projections prepared by Meridian Capital Group with respect to future events, and these future events may or may not actually occur. Such estimates and projections reflect various assumptions concerning anticipated results. While Meridian Capital Group believes these assumptions are reasonable, there can be no assurance that any of these estimates and projections will be correct. Therefore, actual results may vary materially from these estimates and projections. Any square footage dimensions set forth are approximate.