

71

UNIVERSITY PLACE GREENWICH VILLAGE, NYC

Between East 10th and 11th Streets

RETAIL FOR LEASE



APPROXIMATE SIZE

Ground Floor: 1,034 SF

ASKING RENT

\$18,500/Month

TERM

7-10 Years

FRONTAGE

20 FT

POSSESSION

Immediate

COMMENTS

- Former Verizon Store
- Non-Vented Food Use is Acceptable

NEIGHBORS

BareLuxury • Moleskine • Supercuts
• Wagwear • Nix • Village Taverna
Greek Grill • Peacefood Cafe • Tortaria
• Madman Espresso • Amorino Gelato

TRANSPORTATION



JAMES FAMULARO
President

YONI HADAR
Director
yh@meridiancapital.com
347.517.8705

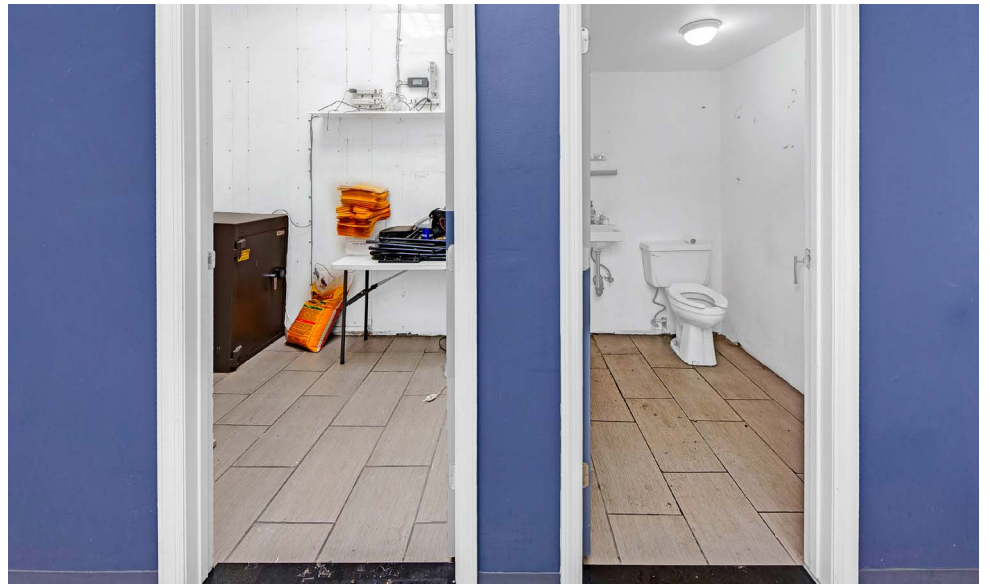
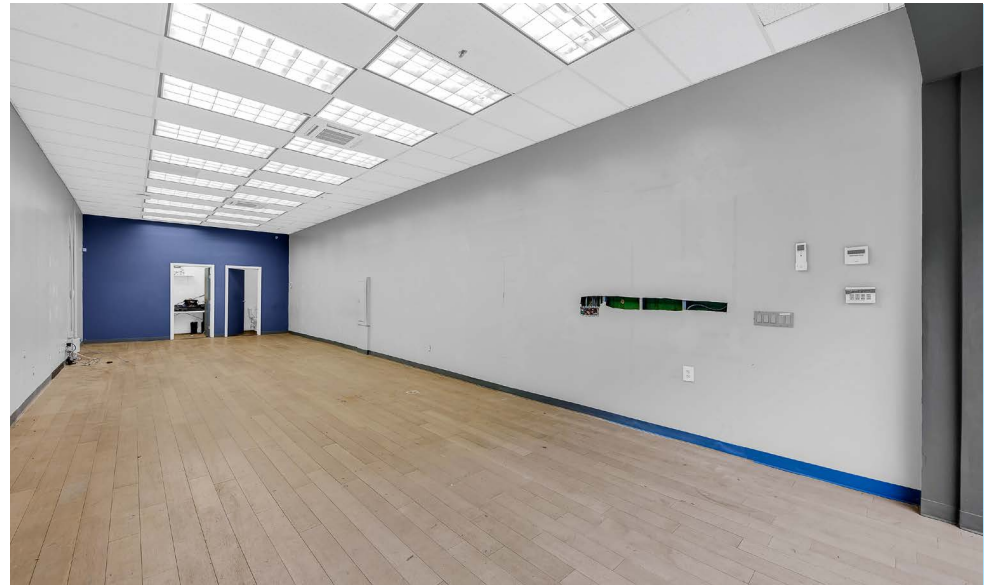
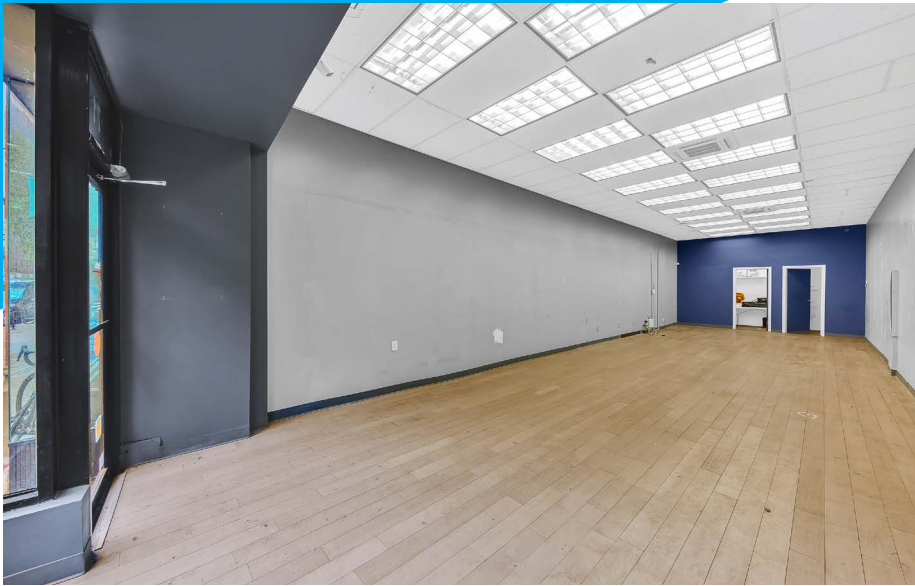


All information supplied is from sources deemed reliable and is furnished subject to errors, omissions, modifications, removal of the listing from sale or lease, and to any listing conditions, including the rates and manner of payment of commissions for particular offerings imposed by Meridian Capital Group. This information may include estimates and projections prepared by Meridian Capital Group with respect to future events, and these future events may or may not actually occur. Such estimates and projections reflect various assumptions concerning anticipated results. While Meridian Capital Group believes these assumptions are reasonable, there can be no assurance that any of these estimates and projections will be correct. Therefore, actual results may vary materially from these estimates and projections. Any square footage dimensions set forth are approximate.

71 UNIVERSITY PLACE

GREENWICH VILLAGE, NYC | Between 10th and 11th Streets

RETAIL FOR LEASE



INTERIOR

JAMES FAMULARO
President

YONI HADAR
Director
yh@meridiancapital.com
347.517.8705

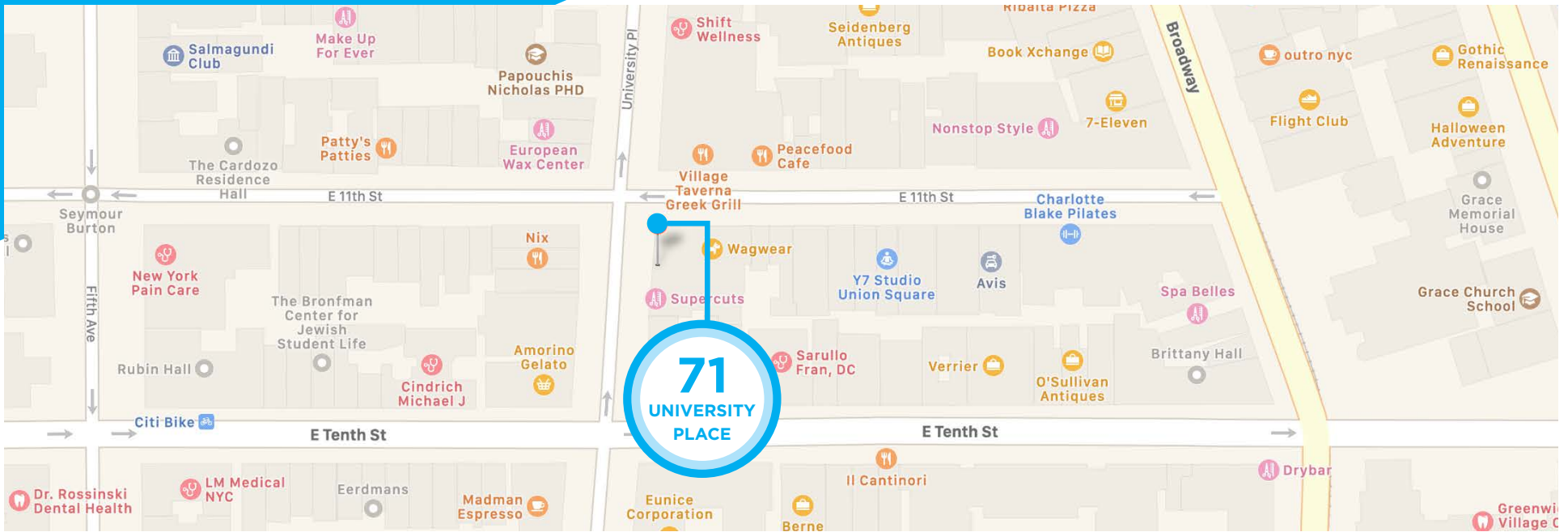


All information supplied is from sources deemed reliable and is furnished subject to errors, omissions, modifications, removal of the listing from sale or lease, and to any listing conditions, including the rates and manner of payment of commissions for particular offerings imposed by Meridian Capital Group. This information may include estimates and projections prepared by Meridian Capital Group with respect to future events, and these future events may or may not actually occur. Such estimates and projections reflect various assumptions concerning anticipated results. While Meridian Capital Group believes these assumptions are reasonable, there can be no assurance that any of these estimates and projections will be correct. Therefore, actual results may vary materially from these estimates and projections. Any square footage dimensions set forth are approximate.

71 UNIVERSITY PLACE

GREENWICH VILLAGE, NYC | Between 10th and 11th Streets

RETAIL FOR LEASE



YOUR NEIGHBORS



JAMES FAMULARO
President

YONI HADAR
Director
yh@meridiancapital.com
347.517.8705



All information supplied is from sources deemed reliable and is furnished subject to errors, omissions, modifications, removal of the listing from sale or lease, and to any listing conditions, including the rates and manner of payment of commissions for particular offerings imposed by Meridian Capital Group. This information may include estimates and projections prepared by Meridian Capital Group with respect to future events, and these future events may or may not actually occur. Such estimates and projections reflect various assumptions concerning anticipated results. While Meridian Capital Group believes these assumptions are reasonable, there can be no assurance that any of these estimates and projections will be correct. Therefore, actual results may vary materially from these estimates and projections. Any square footage dimensions set forth are approximate.