

ONE

STATE STREET FINANCIAL DISTRICT, NYC

Corner of State and Whitehall Streets

RETAIL FOR LEASE

APPROXIMATE SIZE

Space A:	3,800 SF
Space B:	4,000 SF
Space B Mezz.:	2,174 SF
Space C:	992 SF
Cellar:	15,977 SF
Sub-Cellar:	20,911 SF
Total:	47,854 SF

ASKING RENT

Upon Request

POSSESSION

Immediate

TERM

Negotiable

FRONTAGE

Space A: 120 FT Wraparound
Space B: 50 FT

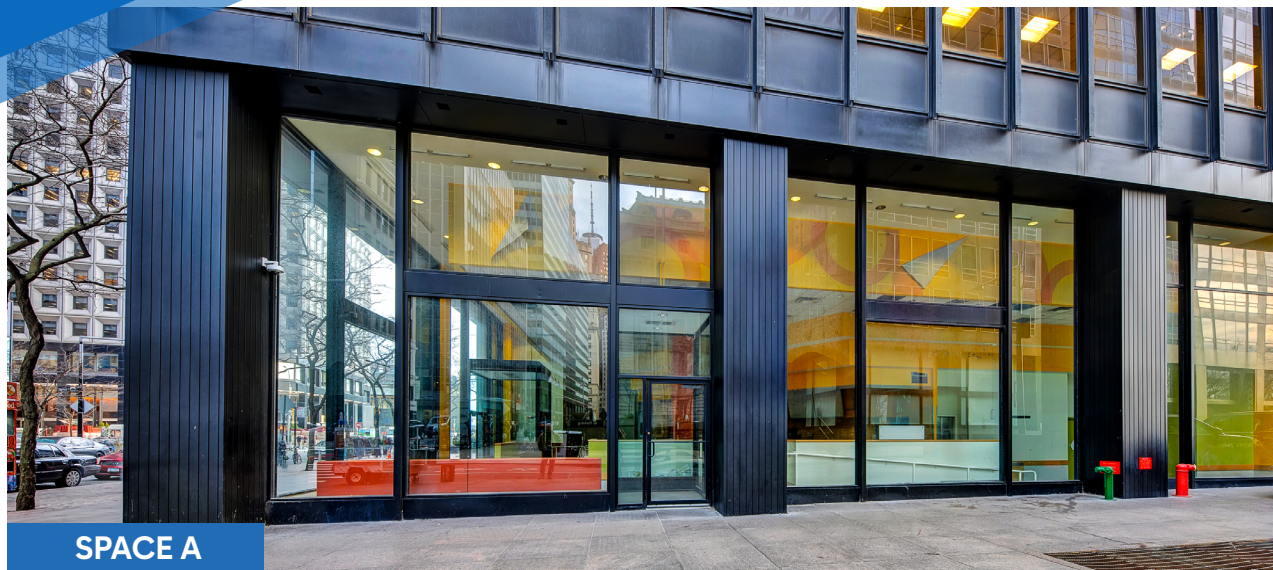
COMMENTS

- Strong exposure to retailing's key customers: employees, residents, and tourists
- All-glass frontage on high-visibility corner location
- Surrounded by multiple tourist destinations

NEIGHBORS

Brookfield Place • Capital Grille • Cipriani • Hermès •
Sephora • Century 21 • Whitehorse Tavern • Andaz Wall
Street • The Ritz-Carlton Battery Park • Tiffany & Co.

TRANSPORTATION



SPACE A



SPACE B

JAMES FAMULARO

President

BEN BIBERAJ

Senior Director
703.434.1461
bbiberaj@meridiancapital.com

ELLIOT WYGODA

Associate
212.468.5968
ewygoda@meridiancapital.com



All information supplied is from sources deemed reliable and is furnished subject to errors, omissions, modifications, removal of the listing from sale or lease, and to any listing conditions, including the rates and manner of payment of commissions for particular offerings imposed by Meridian Capital Group. This information may include estimates and projections prepared by Meridian Capital Group with respect to future events, and these future events may or may not actually occur. Such estimates and projections reflect various assumptions concerning anticipated results. While Meridian Capital Group believes these assumptions are reasonable, there can be no assurance that any of these estimates and projections will be correct. Therefore, actual results may vary materially from these estimates and projections. Any square footage dimensions set forth are approximate.

ONE STATE STREET

FINANCIAL DISTRICT, NYC | Corner of State and Whitehall Streets

RETAIL FOR LEASE



INTERIOR | SPACE A

JAMES FAMULARO
President

BEN BIBERAJ
Senior Director
703.434.1461
bbiberaj@meridiancapital.com

ELLIOT WYGODA
Associate
212.468.5968
ewygoda@meridiancapital.com

 **MERIDIAN**
RETAIL LEASING

All information supplied is from sources deemed reliable and is furnished subject to errors, omissions, modifications, removal of the listing from sale or lease, and to any listing conditions, including the rates and manner of payment of commissions for particular offerings imposed by Meridian Capital Group. This information may include estimates and projections prepared by Meridian Capital Group with respect to future events, and these future events may or may not actually occur. Such estimates and projections reflect various assumptions concerning anticipated results. While Meridian Capital Group believes these assumptions are reasonable, there can be no assurance that any of these estimates and projections will be correct. Therefore, actual results may vary materially from these estimates and projections. Any square footage dimensions set forth are approximate.

ONE STATE STREET

FINANCIAL DISTRICT, NYC | Corner of State and Whitehall Streets

RETAIL FOR LEASE



INTERIOR | SPACE B

JAMES FAMULARO
President

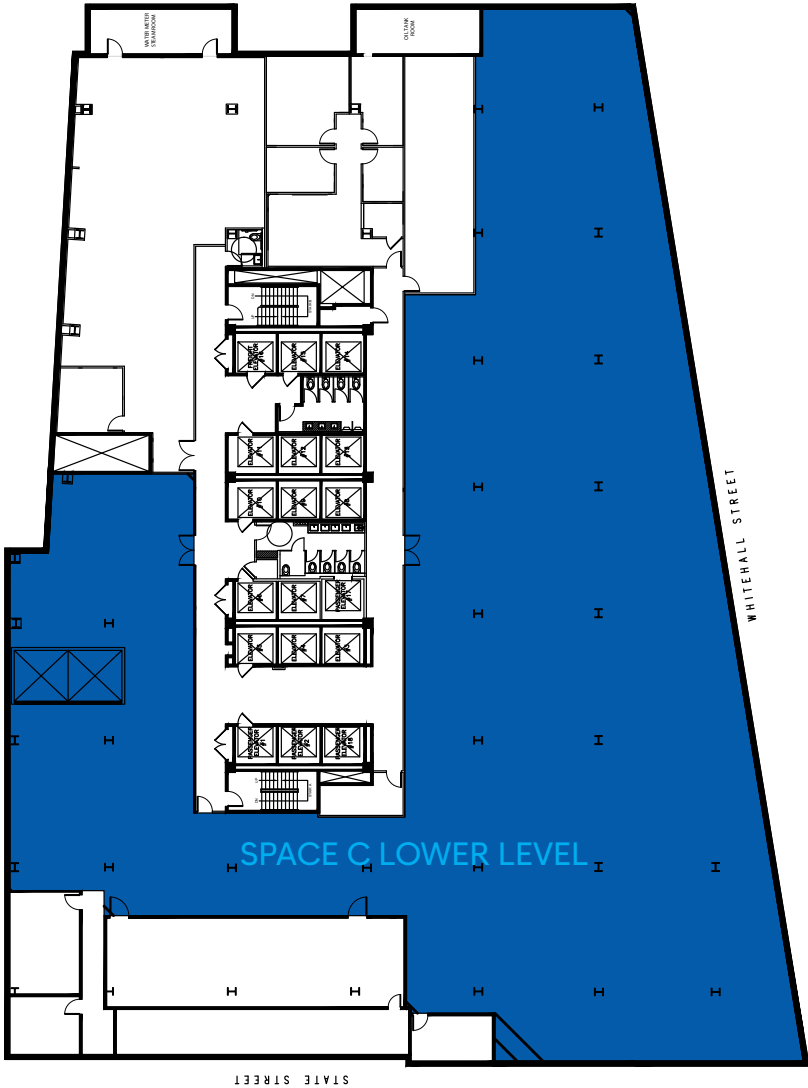
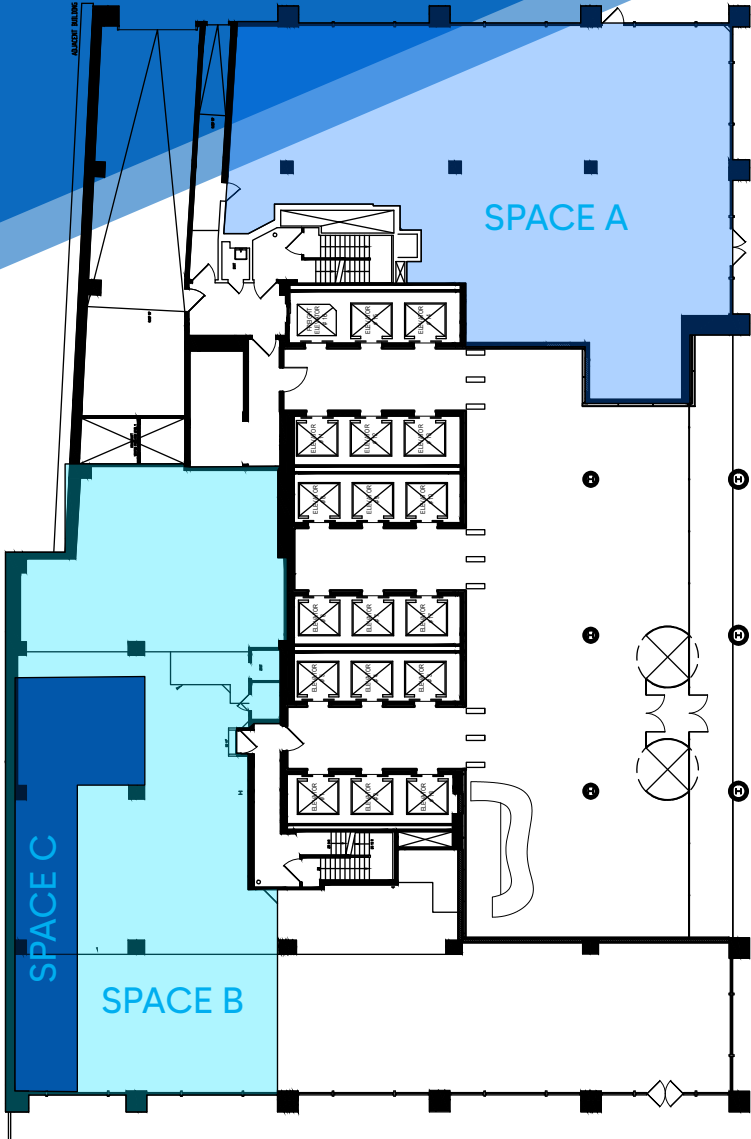
BEN BIBERAJ
Senior Director
703.434.1461
bbiberaj@meridiancapital.com

ELLIOT WYGODA
Associate
212.468.5968
ewygoda@meridiancapital.com



All information supplied is from sources deemed reliable and is furnished subject to errors, omissions, modifications, removal of the listing from sale or lease, and to any listing conditions, including the rates and manner of payment of commissions for particular offerings imposed by Meridian Capital Group. This information may include estimates and projections prepared by Meridian Capital Group with respect to future events, and these future events may or may not actually occur. Such estimates and projections reflect various assumptions concerning anticipated results. While Meridian Capital Group believes these assumptions are reasonable, there can be no assurance that any of these estimates and projections will be correct. Therefore, actual results may vary materially from these estimates and projections. Any square footage dimensions set forth are approximate.

FLOOR PLANS



JAMES FAMULARO
President

BEN BIBERAJ
Senior Director
703.434.1461
bbiberaj@meridiancapital.com

ELLIOT WYGODA
Associate
212.468.5968
ewygoda@meridiancapital.com

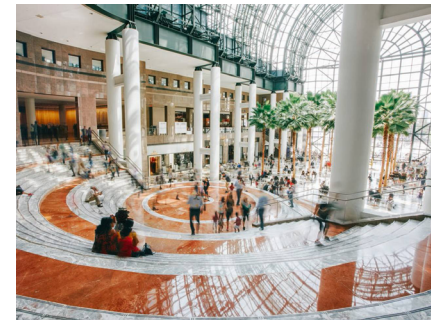


All information supplied is from sources deemed reliable and is furnished subject to errors, omissions, modifications, removal of the listing from sale or lease, and to any listing conditions, including the rates and manner of payment of commissions for particular offerings imposed by Meridian Capital Group. This information may include estimates and projections prepared by Meridian Capital Group with respect to future events, and these future events may or may not actually occur. Such estimates and projections reflect various assumptions concerning anticipated results. While Meridian Capital Group believes these assumptions are reasonable, there can be no assurance that any of these estimates and projections will be correct. Therefore, actual results may vary materially from these estimates and projections. Any square footage dimensions set forth are approximate.

ONE STATE STREET

FINANCIAL DISTRICT, NYC | Corner of State and Whitehall Streets

RETAIL FOR LEASE



NEIGHBORS

JAMES FAMULARO
President

BEN BIBERAJ
Senior Director
703.434.1461
bbiberaj@meridiancapital.com

ELLIOT WYGODA
Associate
212.468.5968
ewygoda@meridiancapital.com

MERIDIAN
RETAIL LEASING

All information supplied is from sources deemed reliable and is furnished subject to errors, omissions, modifications, removal of the listing from sale or lease, and to any listing conditions, including the rates and manner of payment of commissions for particular offerings imposed by Meridian Capital Group. This information may include estimates and projections prepared by Meridian Capital Group with respect to future events, and these future events may or may not actually occur. Such estimates and projections reflect various assumptions concerning anticipated results. While Meridian Capital Group believes these assumptions are reasonable, there can be no assurance that any of these estimates and projections will be correct. Therefore, actual results may vary materially from these estimates and projections. Any square footage dimensions set forth are approximate.