

# 80

## ELIZABETH STREET CHINATOWN, NYC

Corner of Elizabeth & Hester Streets

### APPROXIMATE SIZE

Ground Floor: 15,620 SF  
Selling Lower Level: 12,697 SF  
**Total: 28,317 SF**

### ASKING RENT

Upon Request

### TERM

Long Term

### FRONTAGE

175 FT x 100 FT

### POSSESSION

Arranged

### COMMENTS

- Prime corner retail space, spanning 28,317 SF at the convergence of Chinatown, Little Italy, and the Lower East Side
- Current tenant, Hong Kong Supermarket, has established itself as an anchor in the neighborhood and has been operating for 25+ years
- Located in close proximity to the Grand Street and Canal Street subway stations, the space is easily accessible from both Manhattan and the outer boroughs
- 24/7 foot traffic
- All Uses/Logical Divisions Considered
- New to Market

### NEIGHBORS

Jing Fong • TD Bank • Shanghai Dumpling • Wyndham Garden Chinatown • Citi Bank • Best Western Bowery • Puglia • Original Vincent's • Canal Street • Chase Bank • The Original Chinatown Ice Cream Factory

### TRANSPORTATION

B D F J Z 6 N Q R W

**JAMES FAMULARO**  
President

**KEVIN BISCONTI**  
Director  
kb@meridiancapital.com  
212.468.5962

**JOHN ROESCH**  
Director  
jr@meridiancapital.com  
212.468.5971

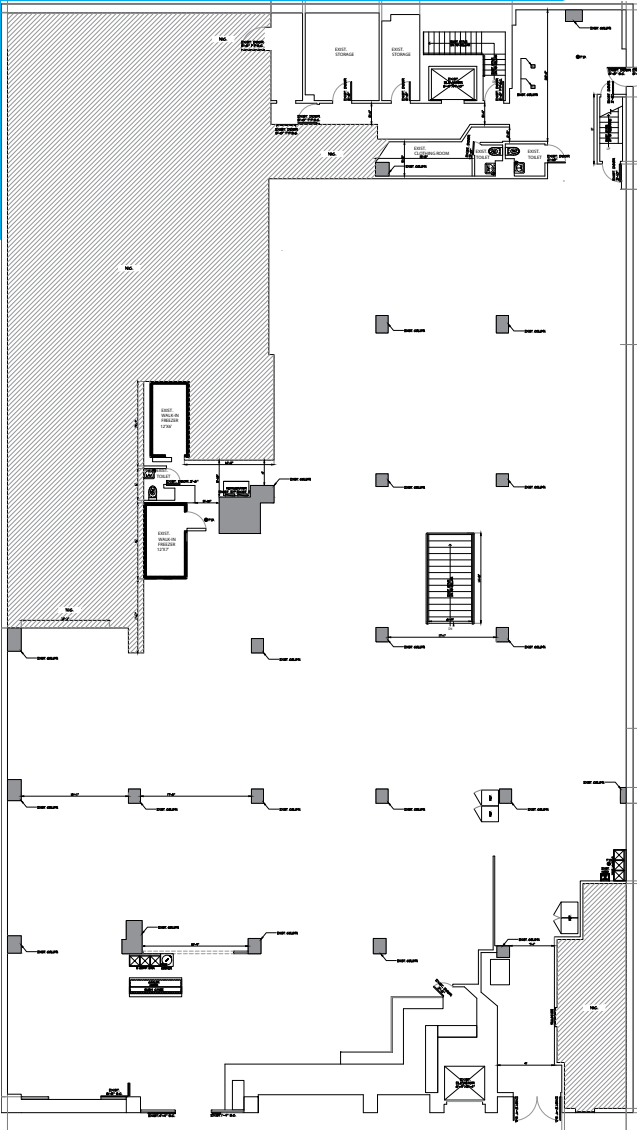
RETAIL FOR LEASE



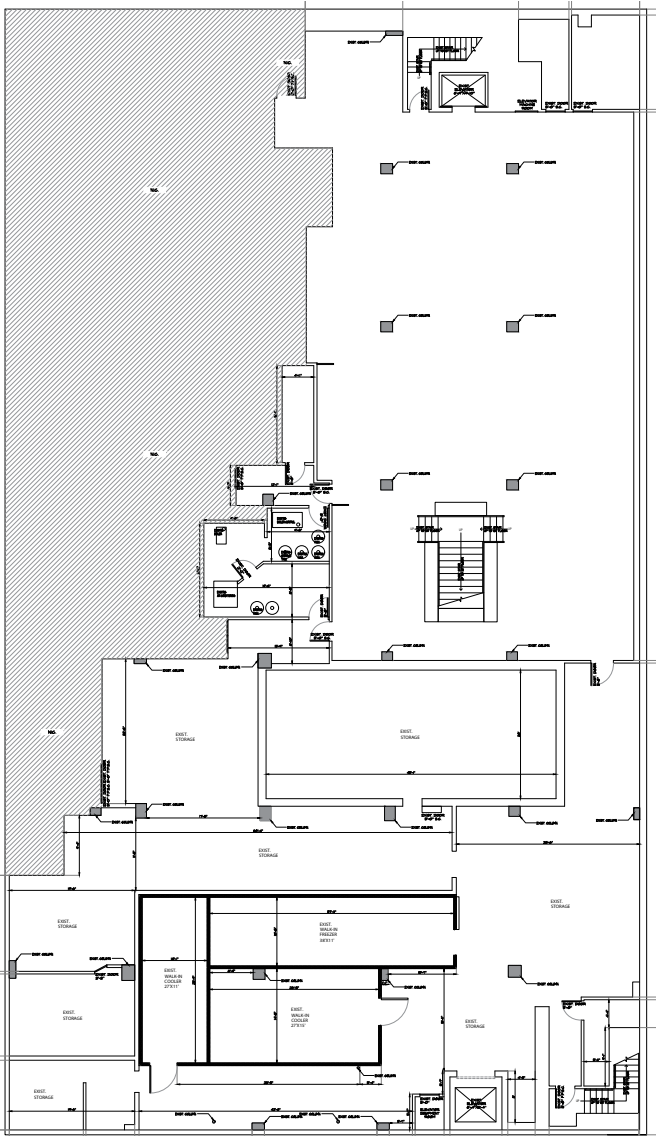
**MERIDIAN**  
RETAIL LEASING

All information supplied is from sources deemed reliable and is furnished subject to errors, omissions, modifications, removal of the listing from sale or lease, and to any listing conditions, including the rates and manner of payment of commissions for particular offerings imposed by Meridian Capital Group. This information may include estimates and projections prepared by Meridian Capital Group with respect to future events, and these future events may or may not actually occur. Such estimates and projections reflect various assumptions concerning anticipated results. While Meridian Capital Group believes these assumptions are reasonable, there can be no assurance that any of these estimates and projections will be correct. Therefore, actual results may vary materially from these estimates and projections. Any square footage dimensions set forth are approximate.

FLOOR PLANS



GROUND FLOOR



LOWER LEVEL

<b>JAMES FAMULARO</b> President	<b>KEVIN BISCONTI</b> Director kb@meridiancapital.com 212.468.5962	<b>JOHN ROESCH</b> Director jr@meridiancapital.com 212.468.5971
------------------------------------	---	--



All information supplied is from sources deemed reliable and is furnished subject to errors, omissions, modifications, removal of the listing from sale or lease, and to any listing conditions, including the rates and manner of payment of commissions for particular offerings imposed by Meridian Capital Group. This information may include estimates and projections prepared by Meridian Capital Group with respect to future events, and these future events may or may not actually occur. Such estimates and projections reflect various assumptions concerning anticipated results. While Meridian Capital Group believes these assumptions are reasonable, there can be no assurance that any of these estimates and projections will be correct. Therefore, actual results may vary materially from these estimates and projections. Any square footage dimensions set forth are approximate.

## 80 ELIZABETH STREET

CHINATOWN, NYC | Corner of Elizabeth & Hester Streets

RETAIL FOR LEASE



INTERIOR

JAMES FAMULARO  
President

KEVIN BISCONTI  
Director  
kb@meridiancapital.com  
212.468.5962

JOHN RIESCH  
Director  
jr@meridiancapital.com  
212.468.5971

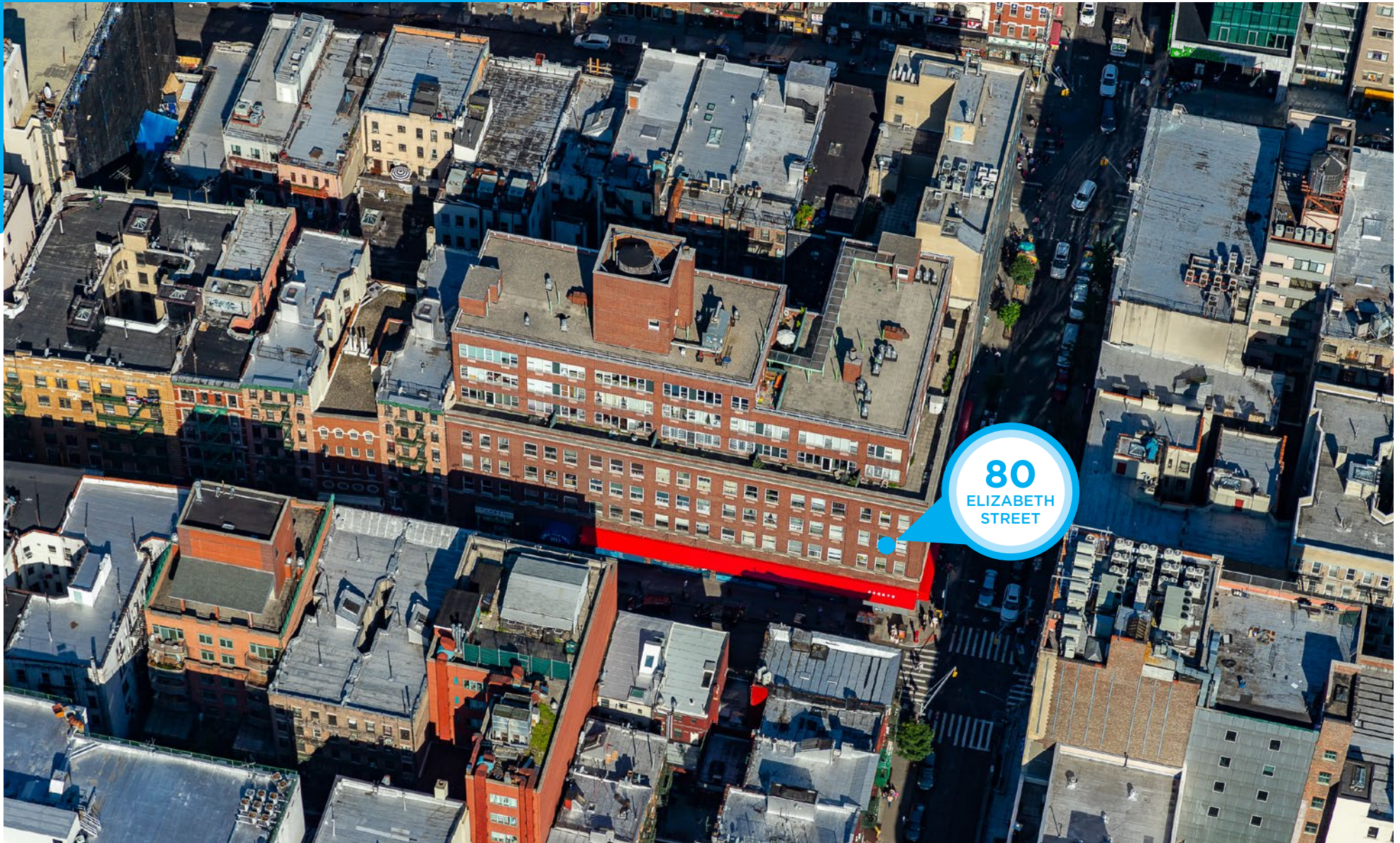
 **MERIDIAN**  
RETAIL LEASING

All information supplied is from sources deemed reliable and is furnished subject to errors, omissions, modifications, removal of the listing from sale or lease, and to any listing conditions, including the rates and manner of payment of commissions for particular offerings imposed by Meridian Capital Group. This information may include estimates and projections prepared by Meridian Capital Group with respect to future events, and these future events may or may not actually occur. Such estimates and projections reflect various assumptions concerning anticipated results. While Meridian Capital Group believes these assumptions are reasonable, there can be no assurance that any of these estimates and projections will be correct. Therefore, actual results may vary materially from these estimates and projections. Any square footage dimensions set forth are approximate.

## 80 ELIZABETH STREET

CHINATOWN, NYC | Corner of Elizabeth & Hester Streets

RETAIL FOR LEASE



JAMES FAMULARO  
President

KEVIN BISCONTI  
Director  
kb@meridiancapital.com  
212.468.5962

JOHN RIESCH  
Director  
jr@meridiancapital.com  
212.468.5971



All information supplied is from sources deemed reliable and is furnished subject to errors, omissions, modifications, removal of the listing from sale or lease, and to any listing conditions, including the rates and manner of payment of commissions for particular offerings imposed by Meridian Capital Group. This information may include estimates and projections prepared by Meridian Capital Group with respect to future events, and these future events may or may not actually occur. Such estimates and projections reflect various assumptions concerning anticipated results. While Meridian Capital Group believes these assumptions are reasonable, there can be no assurance that any of these estimates and projections will be correct. Therefore, actual results may vary materially from these estimates and projections. Any square footage dimensions set forth are approximate.

# 80 ELIZABETH STREET

CHINATOWN, NYC | Corner of Elizabeth & Hester Streets

RETAIL FOR LEASE



YOUR NEIGHBORS



**JAMES FAMULARO**  
President

**KEVIN BISCONTI**  
Director  
kb@meridiancapital.com  
212.468.5962

**JOHN ROESCH**  
Director  
jr@meridiancapital.com  
212.468.5971

**MERIDIAN**  
RETAIL LEASING

All information supplied is from sources deemed reliable and is furnished subject to errors, omissions, modifications, removal of the listing from sale or lease, and to any listing conditions, including the rates and manner of payment of commissions for particular offerings imposed by Meridian Capital Group. This information may include estimates and projections prepared by Meridian Capital Group with respect to future events, and these future events may or may not actually occur. Such estimates and projections reflect various assumptions concerning anticipated results. While Meridian Capital Group believes these assumptions are reasonable, there can be no assurance that any of these estimates and projections will be correct. Therefore, actual results may vary materially from these estimates and projections. Any square footage dimensions set forth are approximate.