

12

WEST 19TH STREET FLATIRON, NYC

Between Fifth And
Sixth Avenues

APPROXIMATE SIZE

Ground Floor: 2,000 Square Feet
Mezzanine: 500 Square Feet
Lower Level: 1,500 Square Feet

ASKING RENT

\$250 Per Square Foot

TERM

10-15 Years

COMMENTS

- Brand New Second Floor
- 18 Foot Ceilings
- Heavy Foot Traffic

NEIGHBORS

Soul Cycle, Sephora, Victoria's Secret, White House Black Market, Tumi, Intermix, Michael Kors, New Balance, Nike, Kate Spade, Theory, Cole Haan, Aveda, American Apparel, City Bakery, The Gander, Athleta, Baby Gap, Zara, H&M, Barn Joo, Rosa Mexicano, ABC Carpet & Home, Fish's Eddy, Flatiron Lounge, Boqueria, Design Within Reach

TRANSPORTATION

E. 23 St - Broadway



JAMES FAMULARO

President
jf@meridiancapital.com
646.658.7373

RETAIL FOR LEASE



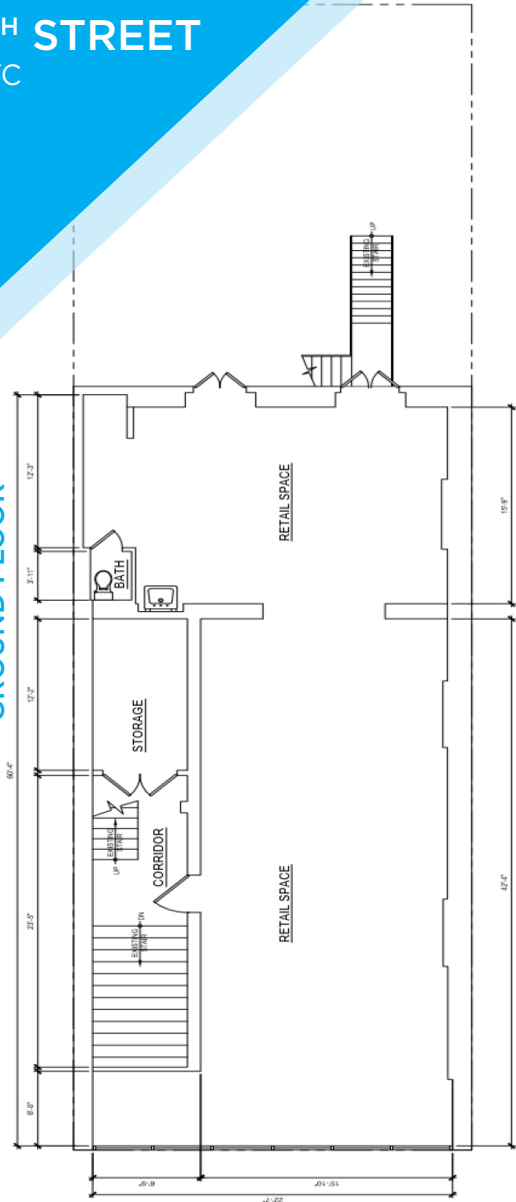
All information supplied is from sources deemed reliable and is furnished subject to errors, omissions, modifications, removal of the listing from sale or lease, and to any listing conditions, including the rates and manner of payment of commissions for particular offerings imposed by Meridian Capital Group. This information may include estimates and projections prepared by Meridian Capital Group with respect to future events, and these future events may or may not actually occur. Such estimates and projections reflect various assumptions concerning anticipated results. While Meridian Capital Group believes these assumptions are reasonable, there can be no assurance that any of these estimates and projections will be correct. Therefore, actual results may vary materially from these estimates and projections. Any square footage dimensions set forth are approximate.

12

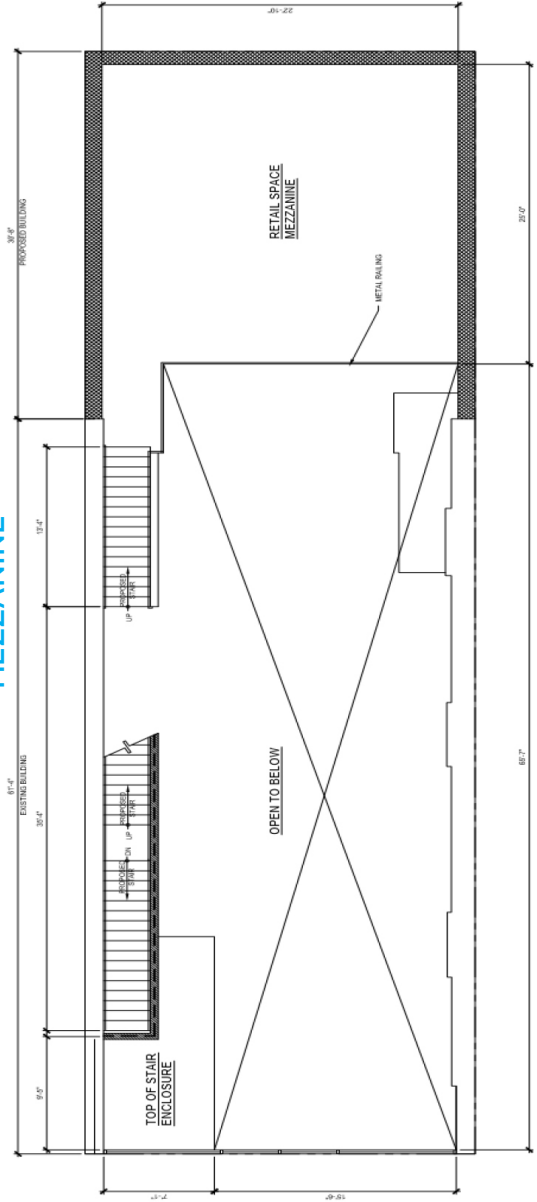
WEST 19TH STREET FLATIRON, NYC

Between Fifth And
Sixth Avenues

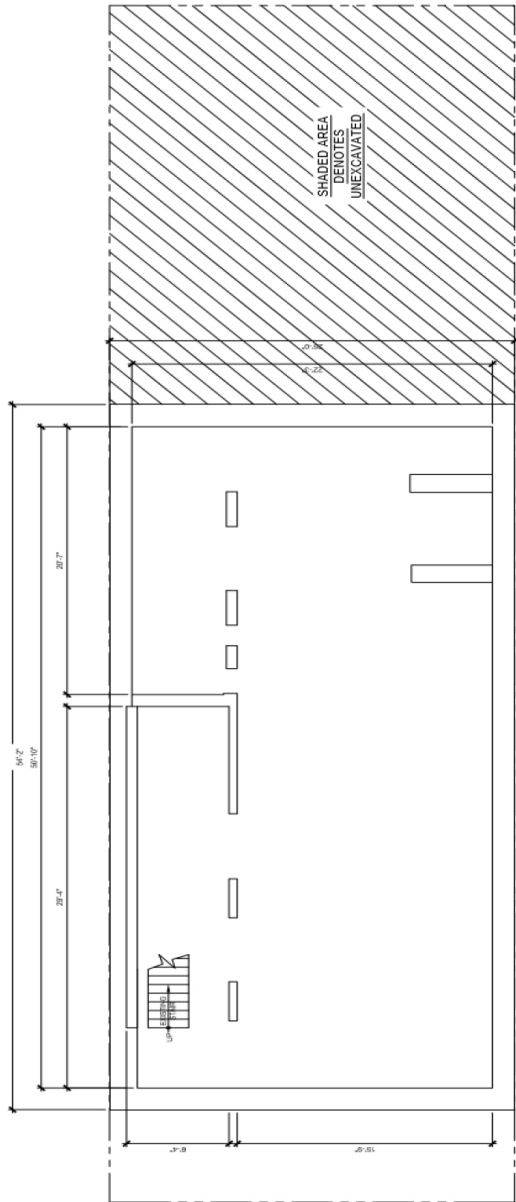
GROUND FLOOR



MEZZANINE



LOWER LEVEL



RETAIL FOR LEASE

JAMES FAMULARO
President
jf@meridiancapital.com
646.658.7373



All information supplied is from sources deemed reliable and is furnished subject to errors, omissions, modifications, removal of the listing from sale or lease, and to any listing conditions, including the rates and manner of payment of commissions for particular offerings imposed by Meridian Capital Group. This information may include estimates and projections prepared by Meridian Capital Group with respect to future events, and these future events may or may not actually occur. Such estimates and projections reflect various assumptions concerning anticipated results. While Meridian Capital Group believes these assumptions are reasonable, there can be no assurance that any of these estimates and projections will be correct. Therefore, actual results may vary materially from these estimates and projections. Any square footage dimensions set forth are approximate.

12

WEST 19TH STREET FLATIRON, NYC

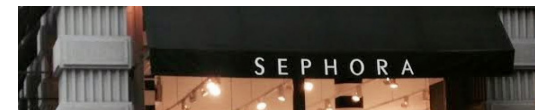
Between Fifth And
Sixth Avenues



JAMES FAMULARO
President
jf@meridiancapital.com
646.658.7373



RETAIL FOR LEASE



MERIDIAN
RETAIL LEASING

All information supplied is from sources deemed reliable and is furnished subject to errors, omissions, modifications, removal of the listing from sale or lease, and to any listing conditions, including the rates and manner of payment of commissions for particular offerings imposed by Meridian Capital Group. This information may include estimates and projections prepared by Meridian Capital Group with respect to future events, and these future events may or may not actually occur. Such estimates and projections reflect various assumptions concerning anticipated results. While Meridian Capital Group believes these assumptions are reasonable, there can be no assurance that any of these estimates and projections will be correct. Therefore, actual results may vary materially from these estimates and projections. Any square footage dimensions set forth are approximate.